


Wall elbow with integrated shower holder - Matte Black

TARA

28 490 660



- 3/8" shower outlet
- rosette Ø 60 mm
- 1/2" connection
- WRAS 1912049

**Intrinsic protection against back flow.**

Intrinsic protection against back flow.


Fits: TARA, VAIA, META

|   |                               |               |
|---|-------------------------------|---------------|
|    | Matte Black                   | 28 490 660-33 |
|    | Chrome                        | 28 490 660-00 |
|    | Brushed Platinum              | 28 490 660-06 |
|    | Platinum                      | 28 490 660-08 |
|    | Dark Brass matt               | 28 490 660-16 |
|    | Dark Bronze matt              | 28 490 660-17 |
|    | Dark Chrome                   | 28 490 660-19 |
|    | Brushed Durabrass (23kt Gold) | 28 490 660-28 |
|    | Brushed Champagne (22kt Gold) | 28 490 660-46 |
|    | Champagne (22kt Gold)         | 28 490 660-47 |
|  | Cyprum                        | 28 490 660-49 |
|  | Brushed Chrome                | 28 490 660-93 |
|  | Brushed Dark Platinum         | 28 490 660-99 |

Required miscellaneous

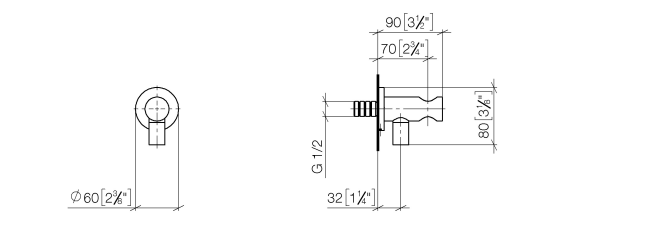
Concealed adapter -

35 080 970-90 0010

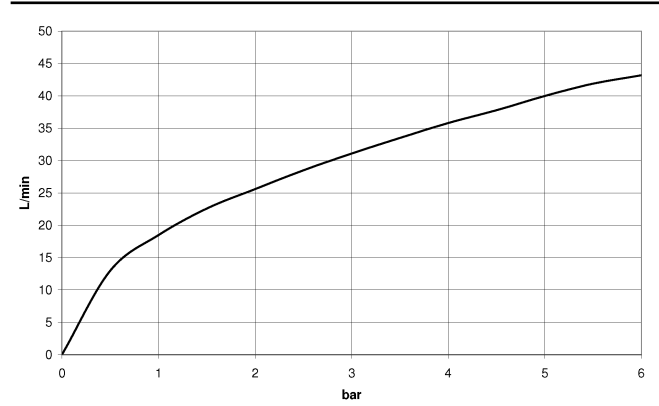


28 490 660

mm [inches]



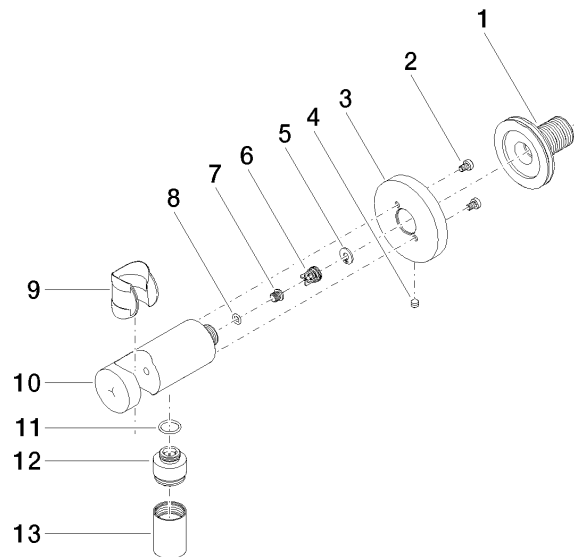
Flow rate chart



Certificates

Belgaqua\_21-024- WRAS\_1912049.  
27\_7.

28 490 660



## Spare parts list

| No. | Item Number        | Name                | Quantity used | Delivery time |
|-----|--------------------|---------------------|---------------|---------------|
| 1   | 90 24 03 280 00 90 | nipple              | 1             | 2             |
| 2   | 09 30 30 037 90    | screw               | 2             | 2             |
| 3   | 09 27 66 001-33    | rosette             | 1             | 30            |
| 4   | 09 31 11 112 90    | pin                 | 1             | 60            |
| 5   | 09 16 01 023 90    | ring                | 1             | 2             |
| 6   | 09 23 01 131 90    | back-flow preventer | 1             | 2             |
| 7   | 09 30 30 113 20 90 | screw               | 1             | 2             |
| 8   | 09 14 10 001 90    | seal                | 1             | 2             |
| 9   | 09 18 40 216 90    | sleeve              | 1             | 2             |
| 10  | 09 11 03 124-33    | connection          | 1             | 30            |
| 11  | 09 14 10 213 90    | seal                | 1             | 2             |
| 12  | 09 24 03 279-33    | nipple              | 1             | 30            |
| 13  | 90 21 02 069 00-33 | cover               | 1             | 30            |