

## Shower head - Champagne (22kt Gold)

## SERIES SPECIFIC

28 504 670



- spray head Ø 100mm
- PURIFY RAIN, max. flow rate 6.8 l/min (at 3 bar)
- Function from: 5.5 l/min
- with anti-scale system

### Technical data:

- 180-210mm projection
- ball-joint pivotable through 30°
- rosette 60 x 60 mm
- 1/2" connection

	Champagne (22kt Gold)	28 504 670-47 0010
	Chrome	28 504 670-00 0010
	Brushed Platinum	28 504 670-06 0010
	Platinum	28 504 670-08 0010
	Dark Chrome	28 504 670-19 0010
	Brushed Light Gold	28 504 670-27 0010
	Brushed Durabrass (23kt Gold)	28 504 670-28 0010
	Matte Black	28 504 670-33 0010
	Brushed Champagne (22kt Gold)	28 504 670-46 0010
	Brushed Chrome	28 504 670-93 0010
	Brushed Dark Platinum	28 504 670-99 0010

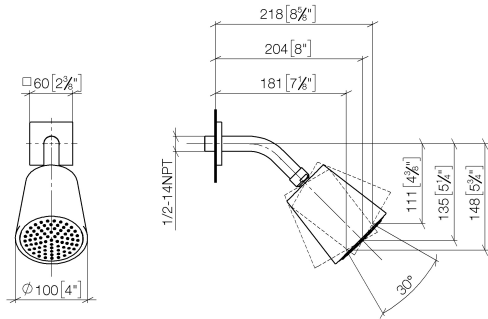


Shower head - Champagne (22kt Gold)

SERIES SPECIFIC

28 504 670

mm [inches]



Codes & Standards

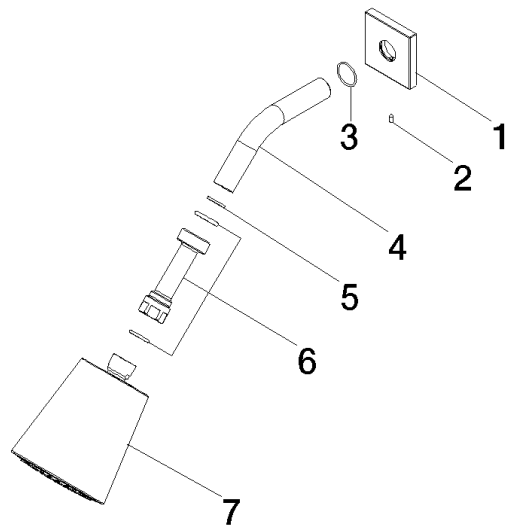
ASME A112.18.1	California Energy Commission (CEC)	cUPC
----------------	------------------------------------	------

Certificates and sustainability

IAPMO\_4976 (

28 504 670

Parts for other  
finishes can be found  
here: [Chrome](#)



Spare parts list

No.	Item Number	Name	Quantity used	Delivery time
1	09 27 98 003-47	rosette	1.00	30
4	09 11 03 011-47	connection	1.00	30
2	09 31 11 048 90	pin	1.00	2
3	90 14 10 026 00 90	seal	1.00	2
5	90 14 20 002 00 90	seal	1.00	2
7	90 12 05 054 01-47	shower	1.00	30
6	90 24 05 017 00 90	nipple	1.00	2