

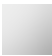



# DORNBRACHT YARRE Shower head - Chrome

28 504 832    Product version from 1/1/2023



- 180-210mm projection
- ball-joint pivotable through 30°
- normal flow
- with anti-scale system
- spray head Ø 100mm
- rosette Ø 55 mm
- 1/2" connection
- max. flow 7.6 l/min
- rosette Ø 55 mm

	Chrome	28 504 832-00 0010
	Soft Black	28 504 832-69 0010

## Recommended miscellaneous

**Concealed wall elbow -**                      35 085 970-90  
0010

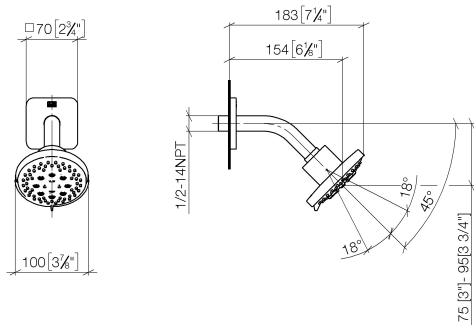




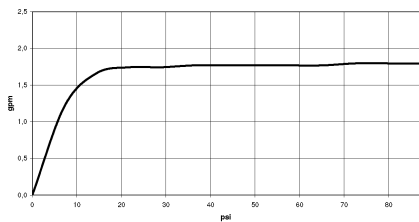
# DORNBRACHT YARRE Shower head - Chrome

28 504 832    Product version from 1/1/2023

mm [inches]



## Flow rate chart



## Codes & Standards

ASME A112.18.1	ASME A112.18.1/CSA B125.1	California Energy Commission (CEC)	cUPC
EPA WaterSense	WaterSense		





DORNBRAUCH YARRE Shower head - Chrome

---

28 504 832    Product version from 1/1/2023

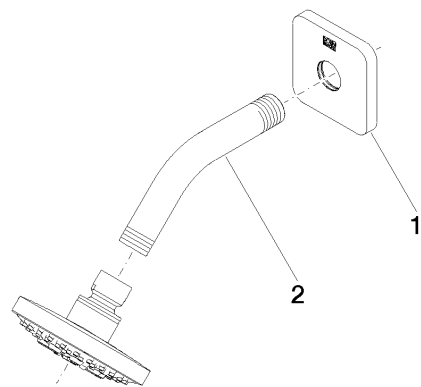
Certificates

---

IAPMO\_4976            IAPMO\_11777

DORNBRACT YARRE Shower head - Chrome

28 504 832    Product version from 1/1/2023



Spare parts list

No.	Item Number	Name	Quantity used	Delivery time
1	90 27 83 016 00-00	rosette	1	2
2	90 11 03 011 11-00	connection	1	2