

Shower head - Dark Chrome

TARA

28 504 979



Fits: TARA, LISSÉ, VAIA, META

- 180-210mm projection
- ball-joint pivotable through 30°
- PURIFY RAIN, max. flow rate 6.8 l/min (at 3 bar)
- with anti-scale system
- spray head Ø 100mm
- rosette Ø 55 mm
- 1/2" connection
- This product reduces water consumption by % (compared to requirements of EPAct '92)
- This product can help a building meet the requirements of Green Building Rating Systems, e.g. LEED®, BREEAM®, DGNB

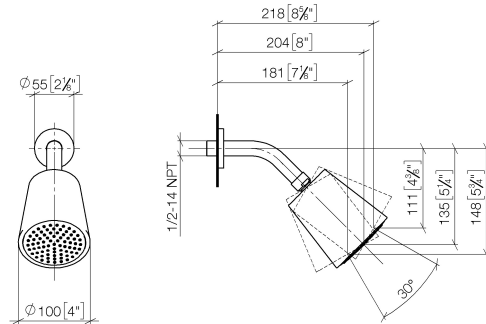
| | | |
|--|--------------------------------|--------------------|
|  | Dark Chrome | 28 504 979-19 0010 |
|  | Chrome | 28 504 979-00 0010 |
|  | Brushed Platinum | 28 504 979-06 0010 |
|  | Platinum | 28 504 979-08 0010 |
|  | Light Gold | 28 504 979-26 0010 |
|  | Brushed Light Gold | 28 504 979-27 0010 |
|  | Brushed Durabronze (23kt Gold) | 28 504 979-28 0010 |
|  | Matte Black | 28 504 979-33 0010 |
|  | Brushed Bronze | 28 504 979-42 0010 |
|  | Brushed Champagne (22kt Gold) | 28 504 979-46 0010 |
|  | Champagne (22kt Gold) | 28 504 979-47 0010 |
|  | Brushed Chrome | 28 504 979-93 0010 |
|  | Brushed Dark Platinum | 28 504 979-99 0010 |

Shower head - Dark Chrome

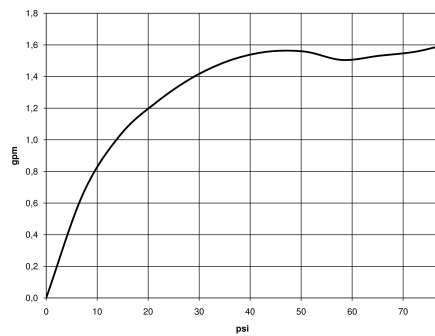
TARA

28 504 979

mm [inches]



Flow rate chart



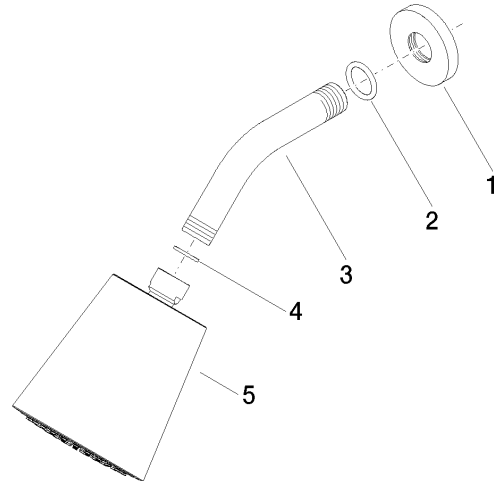
Codes & Standards

ASME
A112.18.1/CSA
B125.1

California Energy
Commission
(CEC)

28 504 979

Parts for other
finishes can be found
here: [Chrome](#)





Shower head - Dark Chrome

TARA

28 504 979

Spare parts list