


MADISON Body spray without volume control FlowReduce - Brushed Durabrass (23kt Gold)

MADISON

28 518 360			
	<ul style="list-style-type: none"> spray head Ø 55mm ball-joint pivotable through 25° (in any direction) rain flow rosette Ø 55 mm 1/2" connection max. flow 5 l/min This product can help a building meet the requirements of Green Building Rating Systems, e.g. LEED®, BREEAM®, DGNB 	<div>  Brushed Durabrass (23kt Gold) </div> <div>  Chrome </div> <div>  Brushed Platinum </div> <div>  Platinum </div> <div>  Durabrass (23kt Gold) </div> <div>  Brushed Dark Platinum </div>	<div>28 518 360-28</div> <div>28 518 360-00</div> <div>28 518 360-06</div> <div>28 518 360-08</div> <div>28 518 360-09</div> <div>28 518 360-99</div>

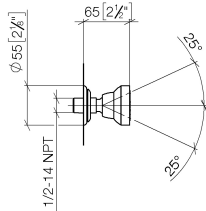
Required miscellaneous

	Concealed adapter -	35 080 970-90
		0010

MADISON Body spray without volume control FlowReduce - Brushed Durabron (23kt Gold)

MADISON

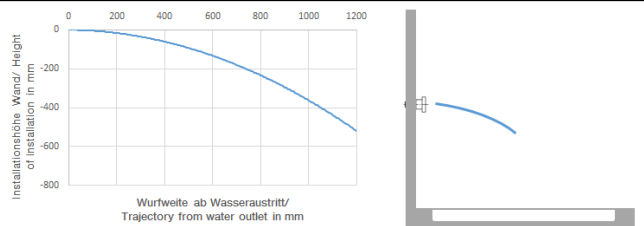
28 518 360
mm [inches]



Flow rate chart



Trajectory diagram



Codes & Standards

ASME
A112.18.1/CSA
B125.1

California Energy
Commission
(CEC)



MADISON Body spray without volume control FlowReduce - Brushed
Durabrass (23kt Gold)

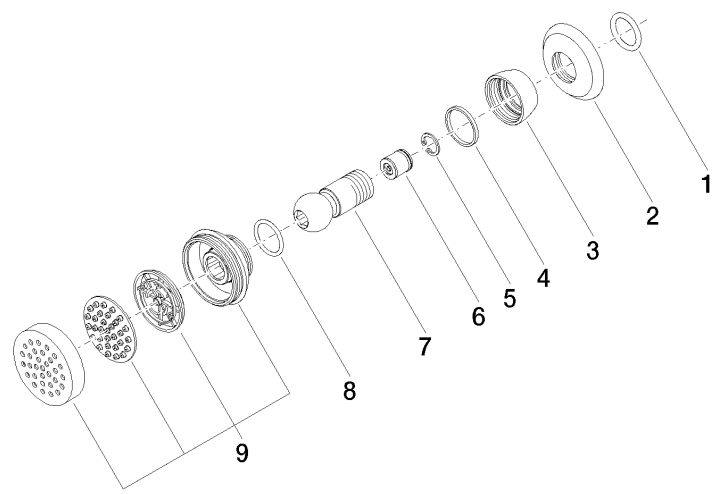
MADISON

28 518 360

Certificates

LGA_38651.

28 518 360



Spare parts list

No.	Item Number	Name	Quantity used	Delivery time
1	90 14 10 026 00 90	seal	1	2
2	09 27 35 003-28	rosette	1	60
3	09 23 30 027-28	nut	1	20
4	09 14 15 010 90	ring	1	2
5	09 16 01 014 90	ring	1	2
6	09 23 01 048 90	back-flow preventer	1	2
7	09 21 40 016-28	connection	1	20
8	09 14 10 015 90	seal	1	2
9	90 12 05 028 00-28	casing (completely)	1	20