

## Body spray without volume control FlowReduce - Light Gold

TARA

28 518 979



- spray head Ø 55mm
- ball-joint pivotable through 25° (in any direction)
- HORIZONTAL RAIN, max. flow rate 5 l/min (at 3 bar)
- with anti-scale system
- rosette Ø 55 mm
- 1/2" connection
- This product can help a building meet the requirements of Green Building Rating Systems, e.g. LEED®, BREEAM®, DGNB

Fits: TARA, LISSÉ, VAIA, META

	Light Gold	28 518 979-26
	Chrome	28 518 979-00
	Brushed Platinum	28 518 979-06
	Platinum	28 518 979-08
	Durabronze (23kt Gold)	28 518 979-09
	Dark Chrome	28 518 979-19
	Brushed Light Gold	28 518 979-27
	Brushed Durabronze (23kt Gold)	28 518 979-28
	Matte Black	28 518 979-33
	Brushed Bronze	28 518 979-42
	Brushed Champagne (22kt Gold)	28 518 979-46
	Champagne (22kt Gold)	28 518 979-47
	Brushed Chrome	28 518 979-93
	Brushed Dark Platinum	28 518 979-99

### Required miscellaneous

**Concealed adapter -**

35 080 970-90  
0010

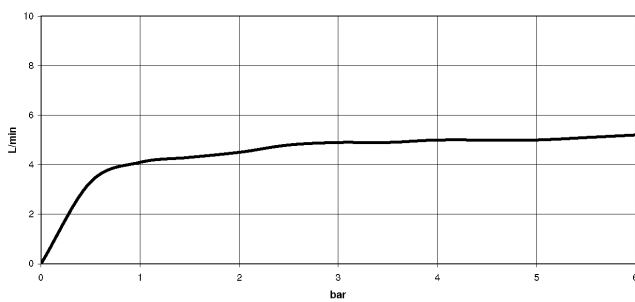


28 518 979

mm [inches]



Flow rate chart



Trajectory diagram



## Codes & Standards

ASME  
A112.18.1/CSA  
B125.1

California Energy  
Commission  
(CEC)

DIN 4109

ISO 3822

Ü-Zeichen



## Body spray without volume control FlowReduce - Light Gold

---

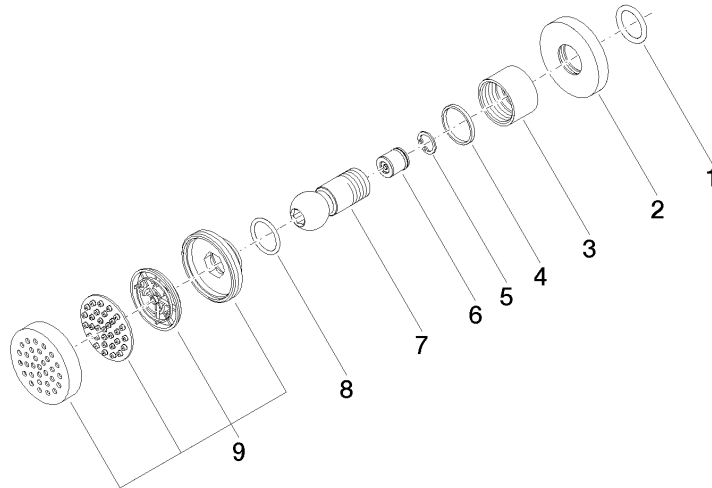
TARA

28 518 979

### Certificates

---

LGA\_38





## Spare parts list