

## Rain shower with ceiling fixing 220 mm - Brushed Light Gold

IMO

28 669 970



Fits: IMO, TARA, LISSÉ, VAIA, META, CYO

- PURE RAIN, max. flow rate 6.8 l/min (at 3 bar)
- with anti-scale system
- rain shower Ø 220 mm
- rosette Ø 60 mm optional
- 1/2" connection
- Function from: 6 l/min
- quick clearing
- This product reduces water consumption by % (compared to requirements of EPAct '92)
- This product can contribute to Water Use Reduction in LEED® Green Building Rating
- This product can help a building meet the requirements of Green Building Rating Systems, e.g. LEED®, BREEAM®, DGNB

|  |                                |                    |
|--|--------------------------------|--------------------|
|    | Brushed Light Gold             | 28 669 970-27 0010 |
|    | Chrome                         | 28 669 970-00 0010 |
|    | Brushed Platinum               | 28 669 970-06 0010 |
|    | Platinum                       | 28 669 970-08 0010 |
|    | Dark Chrome                    | 28 669 970-19 0010 |
|    | Light Gold                     | 28 669 970-26 0010 |
|    | Brushed Durabronze (23kt Gold) | 28 669 970-28 0010 |
|    | Matte Black                    | 28 669 970-33 0010 |
|    | Brushed Bronze                 | 28 669 970-42 0010 |
|    | Brushed Champagne (22kt Gold)  | 28 669 970-46 0010 |
|  | Champagne (22kt Gold)          | 28 669 970-47 0010 |
|  | Brushed Chrome                 | 28 669 970-93 0010 |
|  | Brushed Dark Platinum          | 28 669 970-99 0010 |

### Required miscellaneous



**Concealed wall elbow -**

- min. recess depth 90 mm
- max. recess depth 163 mm

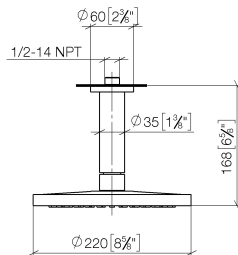
35 085 970-90  
0010

## Rain shower with ceiling fixing 220 mm - Brushed Light Gold

IMO

28 669 970

mm [inches]



### Flow rate chart

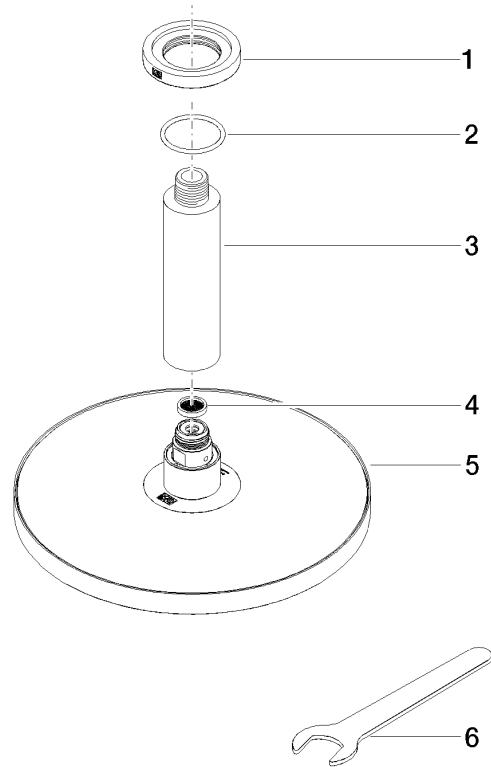


### Codes & Standards

ASME  
A112.18.1/CSA  
B125.1

California Energy  
Commission  
(CEC)

**Product version from 3/13/2017**





## Rain shower with ceiling fixing 220 mm - Brushed Light Gold

IMO

28 669 970

### Spare parts list

#### Product version from 3/13/2017

| No. | Item Number     | Name    | Quantity used | Delivery time |
|-----|-----------------|---------|---------------|---------------|
|     | 09 27 22 040-27 | rosette | 6             | 60            |