

SERIES SPECIFIC Rain shower with wall fixing 300 mm - Light Gold

SERIES SPECIFIC

28 675 970 Product version from 4/1/2025






- rain shower Ø 300 mm
- Material rain shower: plastic
- PURE RAIN, max. flow rate 6.8 l/min (at 3 bar)
- Function from: 6.5 l/min
- quick clearing
- with anti-scale system

Technical data:

- 450mm projection
- rosette Ø 60 mm
- 1/2" connection

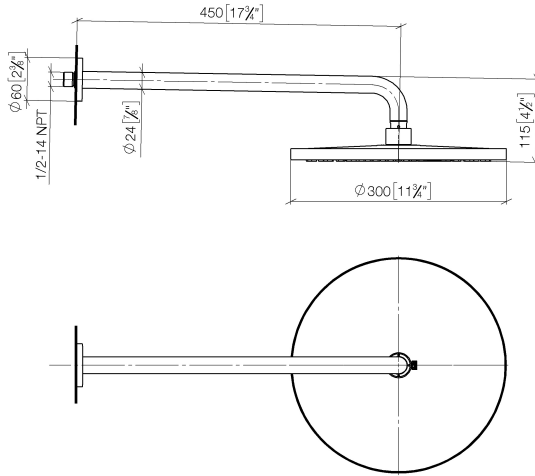
Notes:

- This product can help a building meet the requirements of Green Building Rating Systems, e.g. LEED®, BREEAM®, DGNB

	Light Gold	28 675 970-26 0010
	Chrome	28 675 970-00 0010
	Dark Chrome	28 675 970-19 0010
	Brushed Light Gold	28 675 970-27 0010
	Matte Black	28 675 970-33 0010
	Brushed Bronze	28 675 970-42 0010
	Brushed Chrome	28 675 970-93 0010
	Brushed Dark Platinum	28 675 970-99 0010

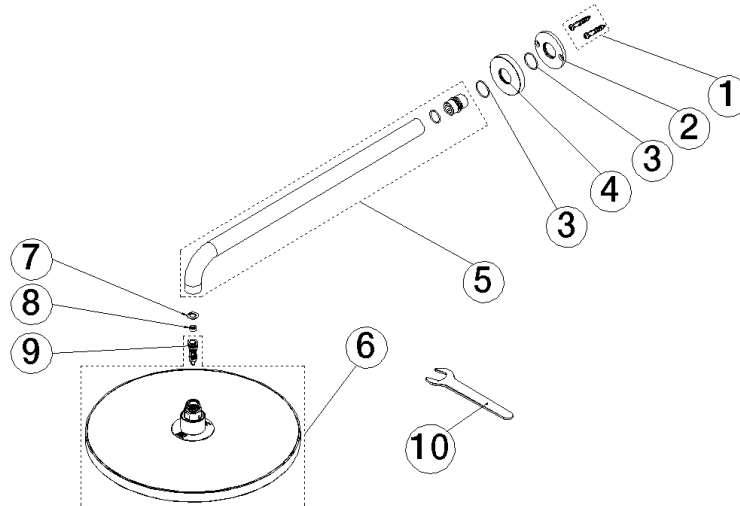
28 675 970 Product version from 4/1/2025

mm [inches]



28 675 970 Product version from 4/1/2025

Parts for other
finishes can be found
here: [Chrome](#)



Spare parts list

No.	Item Number	Name	Quantity used	Delivery time
7	09 16 01 014 90	ring	1.00	2
1	04 30 31 032 00 90	fixing set	1.00	2
9	04 18 40 276 00 90	insert	1.00	2
2	09 17 20 120 90	holder	1.00	2
6	90 12 05 105 00-26	shower	1.00	-
Spare part can no longer be ordered, please order the replacement item				
5	90 11 03 070 00-26	pipe	1.00	30
10	90 30 09 069 00 90	key	1.00	2
4	09 27 97 015-26	rosette	1.00	60
3	09 14 10 150 90	seal	2.00	2
8	09 23 01 102 90	flow reducer	1.00	2