

Rain shower with wall fixing 300 mm - Platinum

SERIES SPECIFIC

28 679 670 Product version from 3/13/2017

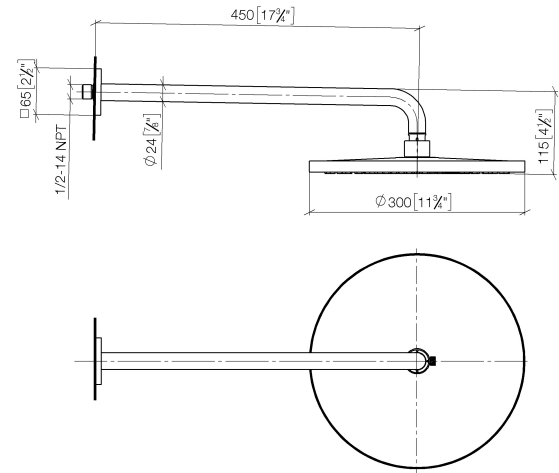


- 450mm projection
- PURE RAIN, max. flow rate 6.8 l/min (at 3 bar)
- Function from: 6.5 l/min
- with anti-scale system
- rain shower Ø 300 mm
- rosette 65 x 65 mm
- 1/2" connection
- quick clearing
- This product reduces water consumption by 28% (compared to requirements of EPAAct '92)
- This product can contribute to Water Use Reduction in LEED® Green Building Rating
- This product can help a building meet the requirements of Green Building Rating Systems, e.g. LEED®, BREEAM®, DGNB

| | | |
|---|--------------------------------|--------------------|
|  | Platinum | 28 679 670-08 0010 |
|  | Chrome | 28 679 670-00 0010 |
|  | Brushed Platinum | 28 679 670-06 0010 |
|  | Dark Chrome | 28 679 670-19 0010 |
|  | Brushed Light Gold | 28 679 670-27 0010 |
|  | Brushed Durabronze (23kt Gold) | 28 679 670-28 0010 |
|  | Matte Black | 28 679 670-33 0010 |
|  | Brushed Champagne (22kt Gold) | 28 679 670-46 0010 |
|  | Champagne (22kt Gold) | 28 679 670-47 0010 |
|  | Brushed Chrome | 28 679 670-93 0010 |
|  | Brushed Dark Platinum | 28 679 670-99 0010 |

28 679 670
Product version from 3/13/2017

mm [inches]

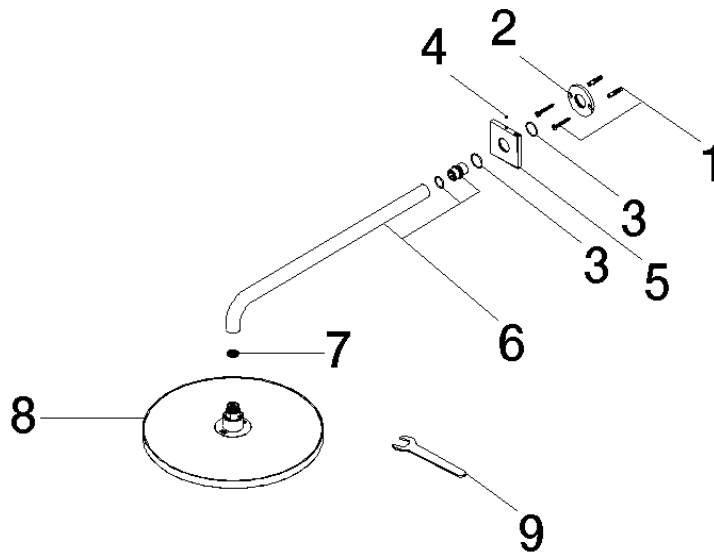


| Codes & Standards | | | |
|-------------------|---|------|----------------|
| ASME A112.18.1 | California Energy Commission (CEC) | cUPC | EPA WaterSense |
| WaterSense |  | | |

| Certificates and sustainability | |
|---------------------------------|-------------|
| IAPMO_4976 | IAPMO_11777 |

28 679 670 Product version from 3/13/2017

Parts for other
finishes can be found
here: [Chrome](#)



Spare parts list

| No. | Item Number | Name | Quantity used | Delivery time |
|-----|--------------------|------------|---------------|---------------|
| 8 | 04 12 05 091 10-08 | shower | 1.00 | 40 |
| 3 | 09 14 10 150 90 | seal | 2.00 | 2 |
| 1 | 04 30 31 032 00 90 | fixing set | 1.00 | 2 |
| 6 | 90 11 03 070 00-08 | pipe | 1.00 | 40 |
| 2 | 09 17 20 120 90 | holder | 1.00 | 2 |
| 7 | 09 23 01 075 90 | insert | 1.00 | 2 |
| 9 | 90 30 09 069 00 90 | key | 1.00 | 2 |
| 4 | 90 31 11 038 00 90 | pin | 1.00 | 2 |
| 5 | 09 27 67 015-08 | rosette | 1.00 | 40 |