

## Rain shower with wall fixing 300 mm - Brushed Light Gold

28 679 670 Product version from 3/13/2017



- 450mm projection
- PURE RAIN, max. flow rate 6.8 l/min (at 3 bar)
- Function from: 6.5 l/min
- with anti-scale system
- rain shower Ø 300 mm
- rosette 65 x 65 mm
- 1/2" connection
- quick clearing
- This product reduces water consumption by 28% (compared to requirements of EPAAct '92)
- This product can contribute to Water Use Reduction in LEED® Green Building Rating
- This product can help a building meet the requirements of Green Building Rating Systems, e.g. LEED®, BREEAM®, DGNB

|   |                                |                    |
|---|--------------------------------|--------------------|
|    | Brushed Light Gold             | 28 679 670-27 0010 |
|    | Chrome                         | 28 679 670-00 0010 |
|    | Brushed Platinum               | 28 679 670-06 0010 |
|    | Platinum                       | 28 679 670-08 0010 |
|    | Dark Chrome                    | 28 679 670-19 0010 |
|    | Brushed Durabronze (23kt Gold) | 28 679 670-28 0010 |
|    | Matte Black                    | 28 679 670-33 0010 |
|    | Brushed Champagne (22kt Gold)  | 28 679 670-46 0010 |
|    | Champagne (22kt Gold)          | 28 679 670-47 0010 |
|  | Brushed Chrome                 | 28 679 670-93 0010 |
|  | Brushed Dark Platinum          | 28 679 670-99 0010 |

### Required miscellaneous



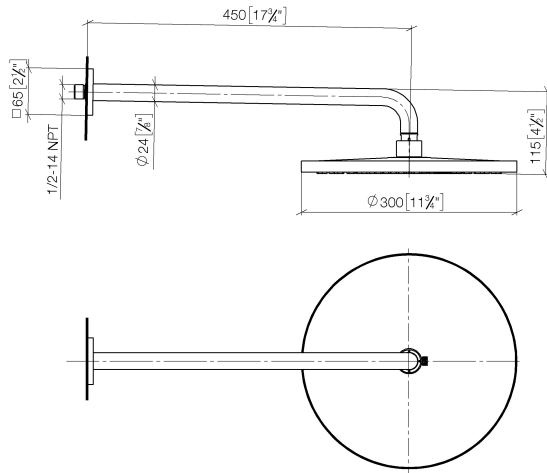
- Concealed wall elbow -**
- min. recess depth mm
  - max. recess depth mm

35 085 970-90  
0010

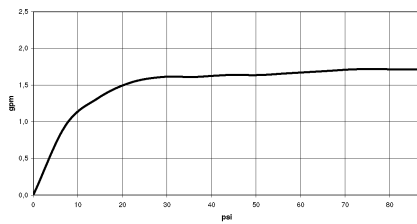
## Rain shower with wall fixing 300 mm - Brushed Light Gold

28 679 670 Product version from 3/13/2017

mm [inches]



### Flow rate chart

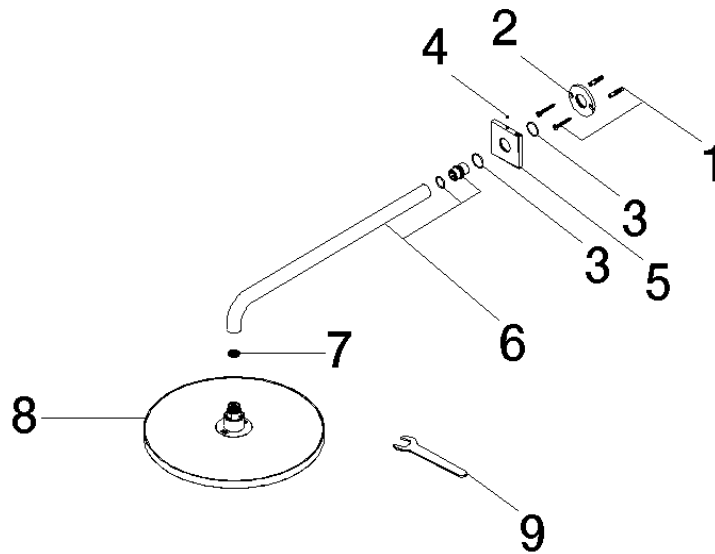


### Codes & Standards

|               |                   |
|---------------|-------------------|
| ASME          | California Energy |
| A112.18.1/CSA | Commission        |
| B125.1        | (CEC)             |

**Rain shower with wall fixing 300 mm - Brushed Light Gold**

28 679 670 Product version from 3/13/2017



**Spare parts list**

| No. | Item Number        | Name       | Quantity used | Delivery time |
|-----|--------------------|------------|---------------|---------------|
| 1   | 04 30 31 032 00 90 | fixing set | 1             | 2             |
| 2   | 09 17 20 120 90    | holder     | 1             | 2             |
| 3   | 09 14 10 150 90    | seal       | 2             | 2             |
| 4   | 90 31 11 038 00 90 | pin        | 1             | 2             |
| 5   | 09 27 67 015-27    | rosette    | 1             | 60            |
| 6   | 90 11 03 070 00-27 | pipe       | 1             | 30            |
| 7   | 09 23 01 075 90    | insert     | 1             | 2             |
| 8   | 04 12 05 091 10-27 | shower     | 1             | 60            |
| 9   | 90 30 09 069 00 90 | key        | 1             | 2             |