

SERIES SPECIFIC Rain shower with ceiling fixing 300 mm - Brushed Dark Platinum

SERIES SPECIFIC

28 685 970

Product version from 4/1/2025



- rain shower Ø 300 mm
- Material rain shower: plastic
- PURE RAIN, max. flow rate 6.8 l/min (at 3 bar)
- Function from: 6.5 l/min
- quick clearing
- with anti-scale system

Technical data:

- rosette Ø 60 mm
- 1/2" connection

Notes:

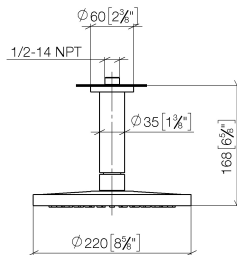
- This product can help a building meet the requirements of Green Building Rating Systems, e.g. LEED®, BREEAM®, DGNB

	Brushed Dark Platinum	28 685 970-99 0010
	Chrome	28 685 970-00 0010
	Dark Chrome	28 685 970-19 0010
	Light Gold	28 685 970-26 0010
	Brushed Light Gold	28 685 970-27 0010
	Matte Black	28 685 970-33 0010
	Brushed Bronze	28 685 970-42 0010
	Brushed Chrome	28 685 970-93 0010

## SERIES SPECIFIC Rain shower with ceiling fixing 300 mm - Brushed Dark Platinum

SERIES SPECIFIC

28 685 970 Product version from 4/1/2025  
mm [inches]

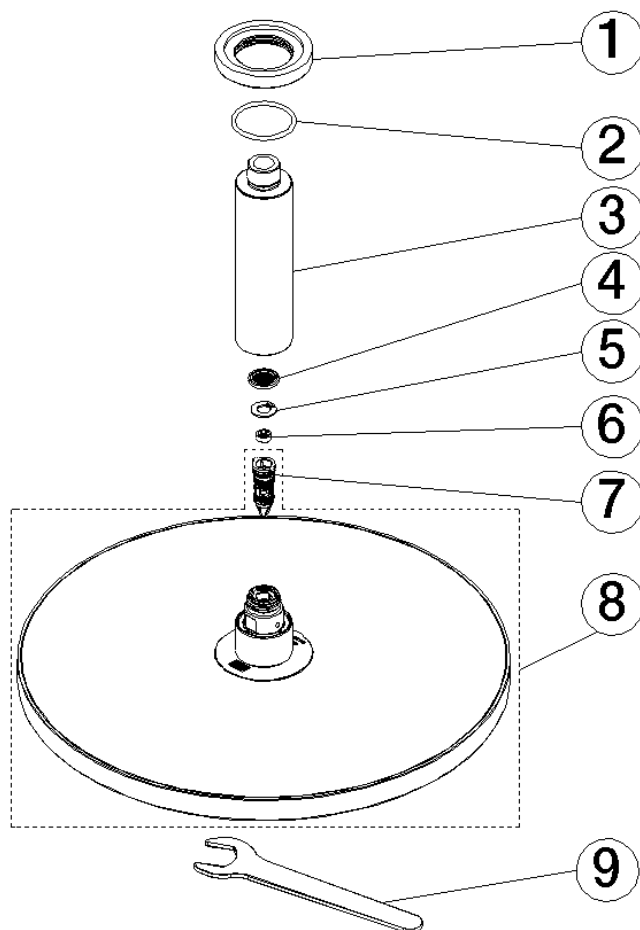


## SERIES SPECIFIC Rain shower with ceiling fixing 300 mm - Brushed Dark Platinum

SERIES SPECIFIC

28 685 970 Product version from 4/1/2025

Parts for other  
finishes can be found  
here: [Chrome](#)



### Spare parts list

No.	Item Number	Name	Quantity used	Delivery time
5	09 16 01 014 90	ring	1.00	2
6	09 23 01 102 90	flow reducer	1.00	2
1	09 27 22 040-99	rosette	1.00	20
8	90 12 05 105 00-99	shower	1.00	-
Spare part can no longer be ordered, please order the replacement item				
7	04 18 40 276 00 90	insert	1.00	2
2	09 14 10 141 90	seal	1.00	2
3	09 11 03 080-99	connection	1.00	20
4	09 23 01 039 90	sieve	1.00	2
9	90 30 09 069 00 90	key	1.00	2