

Rain shower with ceiling fixing 300 mm - Brushed Durabronze (23kt Gold)

28 689 970 Product version from 3/13/2017



- PURE RAIN, max. flow rate 6.8 l/min (at 3 bar)
- with anti-scale system
- rain shower Ø 300 mm
- rosette Ø 60 mm optional
- 1/2" connection
- Function from: 6.5 l/min
- quick clearing
- This product reduces water consumption by 28% (compared to requirements of EPAct '92)
- This product can contribute to Water Use Reduction in LEED® Green Building Rating
- This product can help a building meet the requirements of Green Building Rating Systems, e.g. LEED®, BREEAM®, DGNB

	Brushed Durabronze (23kt Gold)	28 689 970-28 0010
	Chrome	28 689 970-00 0010
	Brushed Platinum	28 689 970-06 0010
	Platinum	28 689 970-08 0010
	Dark Chrome	28 689 970-19 0010
	Light Gold	28 689 970-26 0010
	Brushed Light Gold	28 689 970-27 0010
	Matte Black	28 689 970-33 0010
	Brushed Bronze	28 689 970-42 0010
	Brushed Champagne (22kt Gold)	28 689 970-46 0010
	Champagne (22kt Gold)	28 689 970-47 0010
	Brushed Chrome	28 689 970-93 0010
	Brushed Dark Platinum	28 689 970-99 0010

Required miscellaneous



- Concealed wall elbow -**
- max. recess depth mm
 - min. recess depth mm

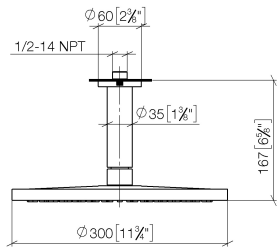
35 085 970-90
0010



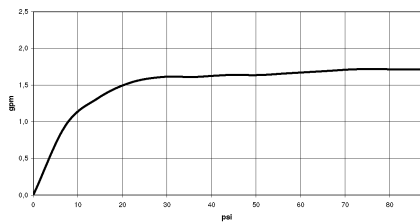
Rain shower with ceiling fixing 300 mm - Brushed Durabronz (23kt Gold)

28 689 970 Product version from 3/13/2017

mm [inches]



Flow rate chart

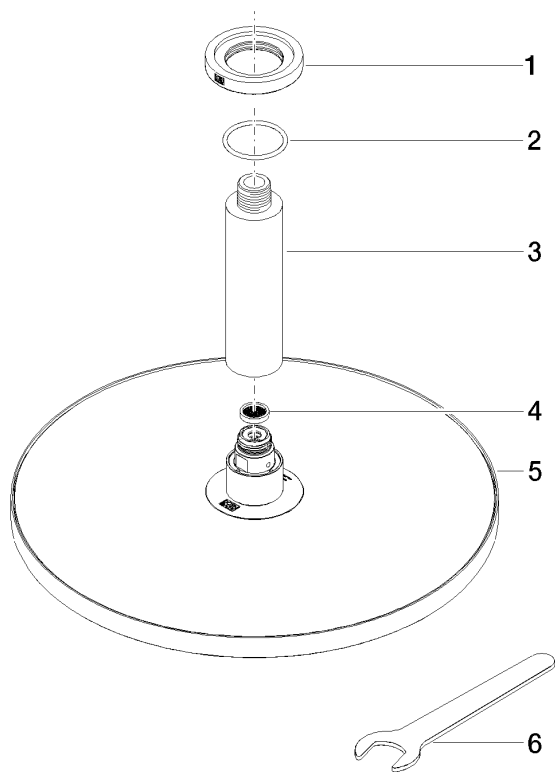


Codes & Standards

ASME	California Energy
A112.18.1/CSA	Commission
B125.1	(CEC)

Rain shower with ceiling fixing 300 mm - Brushed Durabron (23kt Gold)

28 689 970 Product version from 3/13/2017



Spare parts list

No.	Item Number	Name	Quantity used	Delivery time
1	09 27 22 040-28	rosette	1	20
2	09 14 10 141 90	seal	1	2
3	09 11 03 080-28	connection	1	20
4	09 23 01 075 90	insert	1	2
5	04 12 05 091 10-28	shower	1	20
6	90 30 09 069 00 90	key	1	2