

Rain shower with ceiling fixing 300 mm - Brushed Champagne (22kt Gold)

IMO

28 689 970



Fits: IMO, TARA, LISSÉ, VAIA, META, CYO

- PURE RAIN, max. flow rate 6.8 l/min (at 3 bar)
- with anti-scale system
- rain shower Ø 300 mm
- rosette Ø 60 mm optional
- 1/2" connection
- Function from: 6.5 l/min
- quick clearing
- This product reduces water consumption by % (compared to requirements of EPAct '92)
- This product can contribute to Water Use Reduction in LEED® Green Building Rating
- This product can help a building meet the requirements of Green Building Rating Systems, e.g. LEED®, BREEAM®, DGNB

| | | |
|--|--------------------------------|--------------------|
| | Brushed Champagne (22kt Gold) | 28 689 970-46 0010 |
| | Chrome | 28 689 970-00 0010 |
| | Brushed Platinum | 28 689 970-06 0010 |
| | Platinum | 28 689 970-08 0010 |
| | Dark Chrome | 28 689 970-19 0010 |
| | Light Gold | 28 689 970-26 0010 |
| | Brushed Light Gold | 28 689 970-27 0010 |
| | Brushed Durabronze (23kt Gold) | 28 689 970-28 0010 |
| | Matte Black | 28 689 970-33 0010 |
| | Brushed Bronze | 28 689 970-42 0010 |
| | Champagne (22kt Gold) | 28 689 970-47 0010 |
| | Brushed Chrome | 28 689 970-93 0010 |
| | Brushed Dark Platinum | 28 689 970-99 0010 |

Required miscellaneous



Concealed wall elbow -

- max. recess depth 163 mm
- min. recess depth 90 mm

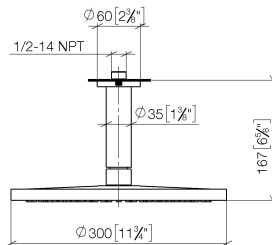
35 085 970-90
0010

Rain shower with ceiling fixing 300 mm - Brushed Champagne (22kt Gold)

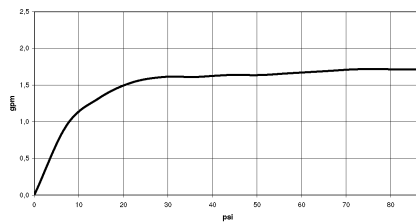
IMO

28 689 970

mm [inches]



Flow rate chart

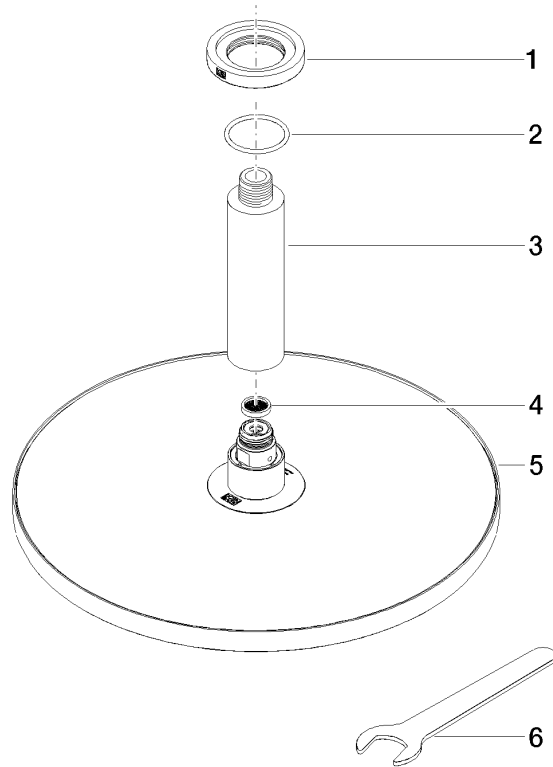


Codes & Standards

ASME
A112.18.1/CSA
B125.1

California Energy
Commission
(CEC)

Product version from 3/13/2017





Rain shower with ceiling fixing 300 mm - Brushed Champagne (22kt Gold)

IMO

28 689 970

Spare parts list

Product version from 3/13/2017

| No. | Item Number | Name | Quantity used | Delivery time |
|-----|-----------------|---------|---------------|---------------|
| | 09 27 22 040-46 | rosette | 6 | 30 |