

Rain shower with wall fixing 300 x 240 mm - Brushed Durabrand (23kt Gold)

MEM

28 765 980



Fits: MEM, CL.1

- 450mm projection
- PURE RAIN, max. flow rate 6.8 l/min (at 3 bar)
- Function from: 6 l/min
- with anti-scale system
- rain shower 300 x 240mm
- rosette 60 x 60 mm
- 1/2" connection
- quick clearing
- This product reduces water consumption by % (compared to requirements of EPA '92)
- This product can contribute to Water Use Reduction in LEED® Green Building Rating
- This product can help a building meet the requirements of Green Building Rating Systems, e.g. LEED®, BREEAM®, DGNB

| | | |
|--|-------------------------------|--------------------|
|  | Brushed Durabrand (23kt Gold) | 28 765 980-28 0010 |
|  | Chrome | 28 765 980-00 0010 |
|  | Brushed Platinum | 28 765 980-06 0010 |
|  | Platinum | 28 765 980-08 0010 |
|  | Dark Chrome | 28 765 980-19 0010 |
|  | Brushed Light Gold | 28 765 980-27 0010 |
|  | Matte Black | 28 765 980-33 0010 |
|  | Brushed Champagne (22kt Gold) | 28 765 980-46 0010 |
|  | Champagne (22kt Gold) | 28 765 980-47 0010 |
|  | Brushed Chrome | 28 765 980-93 0010 |
|  | Brushed Dark Platinum | 28 765 980-99 0010 |

Required miscellaneous



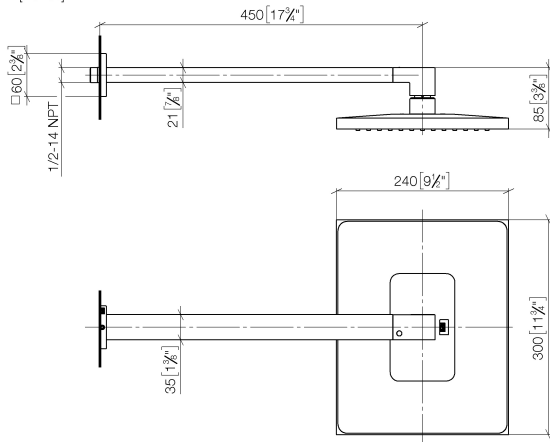
- | | |
|-------------------------------|---------------|
| Concealed wall elbow - | 35 085 970-90 |
| • max. recess depth 163 mm | 0010 |
| • min. recess depth 90 mm | |

Rain shower with wall fixing 300 x 240 mm - Brushed Durabrand (23kt Gold)

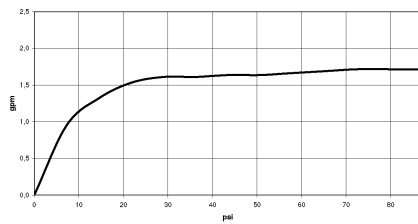
MEM

28 765 980

mm [inches]



Flow rate chart

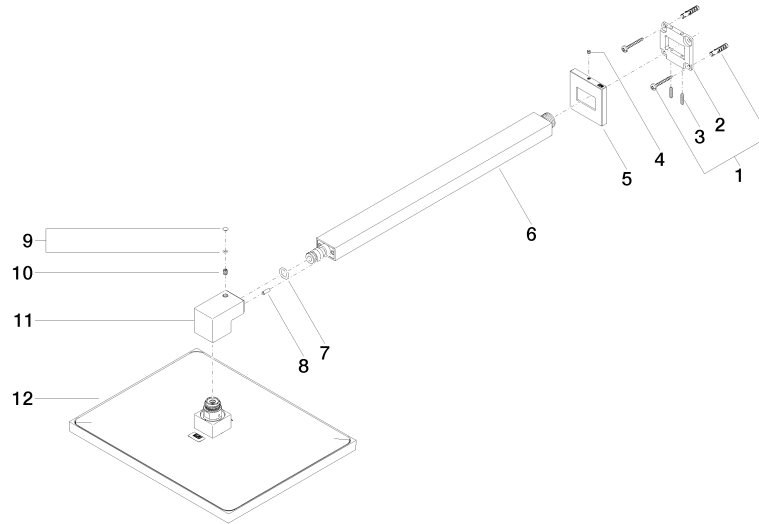


Codes & Standards

ASME
A112.18.1/CSA
B125.1

California Energy
Commission
(CEC)

Product version from 3/13/2017





Rain shower with wall fixing 300 x 240 mm - Brushed Durabross (23kt Gold)

MEM

28 765 980

Spare parts list

Product version from 3/13/2017

| No. | Item Number | Name | Quantity used | Delivery time |
|-----|--------------------|------------|---------------|---------------|
| | 04 30 31 032 00 90 | fixing set | 13 | 2 |