

## Rain shower with wall fixing 300 x 240 mm - Brushed Chrome

SERIES SPECIFIC

28 765 980 Product version from 3/13/2017



- 450mm projection
- PURE RAIN, max. flow rate 6.8 l/min (at 3 bar)
- Function from: 6 l/min
- with anti-scale system
- rain shower 300 x 240mm
- rosette 60 x 60 mm
- 1/2" connection
- quick clearing
- This product reduces water consumption by 28% (compared to requirements of EPAAct '92)
- This product can contribute to Water Use Reduction in LEED® Green Building Rating
- This product can help a building meet the requirements of Green Building Rating Systems, e.g. LEED®, BREEAM®, DGNB

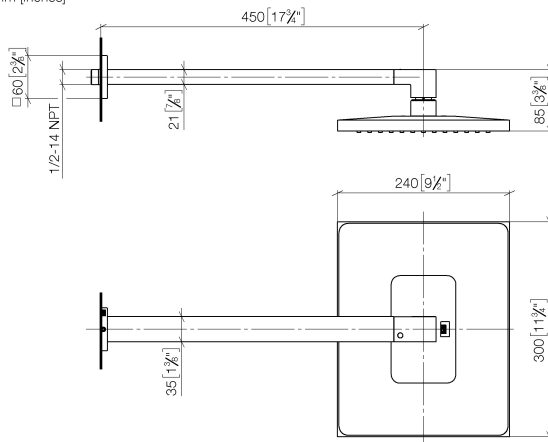
	Brushed Chrome	28 765 980-93 0010
	Chrome	28 765 980-00 0010
	Brushed Platinum	28 765 980-06 0010
	Platinum	28 765 980-08 0010
	Dark Chrome	28 765 980-19 0010
	Brushed Light Gold	28 765 980-27 0010
	Brushed Durabrass (23kt Gold)	28 765 980-28 0010
	Matte Black	28 765 980-33 0010
	Brushed Champagne (22kt Gold)	28 765 980-46 0010
	Champagne (22kt Gold)	28 765 980-47 0010
	Brushed Dark Platinum	28 765 980-99 0010

## Rain shower with wall fixing 300 x 240 mm - Brushed Chrome

SERIES SPECIFIC

28 765 980 Product version from 3/13/2017

mm [inches]



### Codes & Standards

ASME A112.18.1	California Energy Commission (CEC)	cUPC	EPA WaterSense
----------------	------------------------------------	------	----------------

WaterSense



### Certificates and sustainability

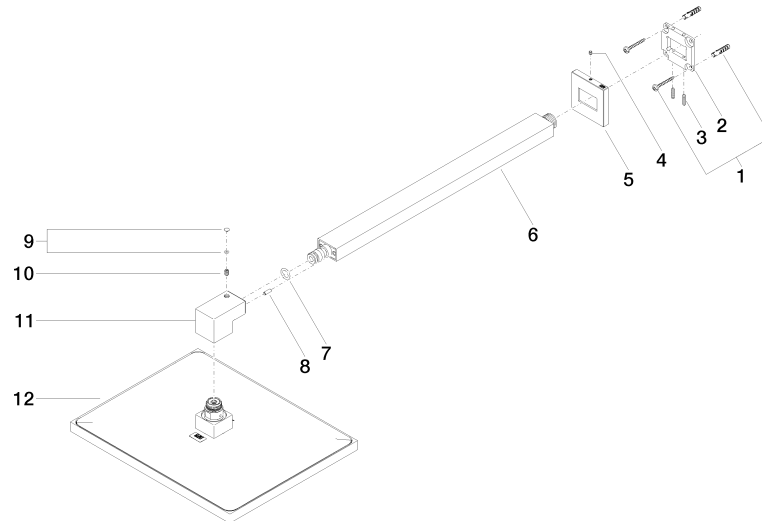
IAPMO\_4976 IAPMO\_11777

## Rain shower with wall fixing 300 x 240 mm - Brushed Chrome

SERIES SPECIFIC

28 765 980 Product version from 3/13/2017

Parts for other  
finishes can be found  
here: [Chrome](#)



### Spare parts list

No.	Item Number	Name	Quantity used	Delivery time
	10 09 31 11 036 90	pin	1.00	2
	2 09 30 11 160 90	disc	1.00	2
	6 04 28 22 249 00-93	pipe	1.00	20
	11 09 17 01 180-93	connection	1.00	20
	9 90 31 20 087 00-93	plug	1.00	20
	1 04 30 31 032 00 90	fixing set	1.00	2
	8 09 31 11 040 90	pin	1.00	2
	5 09 27 98 016-93	rosette	1.00	20
	3 09 31 11 084 90	pin	2.00	2
	4 09 31 11 099 90	pin	1.00	2
	12 04 12 05 063 10-93	shower	1.00	20
	7 90 14 10 011 00 90	seal	1.00	2