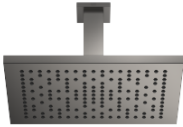


Rain shower with ceiling fixing 300 x 240 mm - Brushed Dark Platinum

28 775 980 Product version from 3/13/2017



- PURE RAIN, max. flow rate 6.8 l/min (at 3 bar)
- with anti-scale system
- rain shower 300 x 240mm
- distance between ceiling and lower edge of the shower 165mm
- rosette 60 x 60, as required
- 1/2" connection
- Function from: 6 l/min
- This product reduces water consumption by 28% (compared to requirements of EPAct '92)
- This product can contribute to Water Use Reduction in LEED® Green Building Rating
- This product can help a building meet the requirements of Green Building Rating Systems, e.g. LEED®, BREEAM®, DGNB

	Brushed Dark Platinum	28 775 980-99 0010
	Chrome	28 775 980-00 0010
	Brushed Platinum	28 775 980-06 0010
	Platinum	28 775 980-08 0010
	Dark Chrome	28 775 980-19 0010
	Brushed Durabronze (23kt Gold)	28 775 980-28 0010
	Matte Black	28 775 980-33 0010
	Brushed Champagne (22kt Gold)	28 775 980-46 0010
	Champagne (22kt Gold)	28 775 980-47 0010
	Brushed Chrome	28 775 980-93 0010

Required miscellaneous



- Concealed wall elbow -**
- max. recess depth mm
 - min. recess depth mm

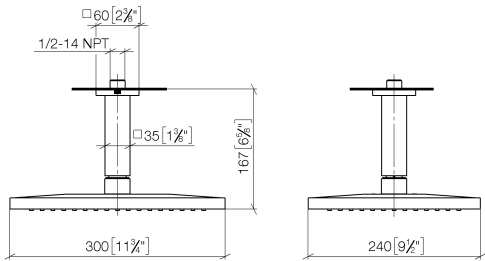
35 085 970-90
0010



Rain shower with ceiling fixing 300 x 240 mm - Brushed Dark Platinum

28 775 980 Product version from 3/13/2017

mm [inches]



Flow rate chart



Codes & Standards

ASME A112.18.1	ASME A112.18.1/CSA B125.1	California Energy Commission (CEC)	cUPC
Water Sense			



Rain shower with ceiling fixing 300 x 240 mm - Brushed Dark Platinum

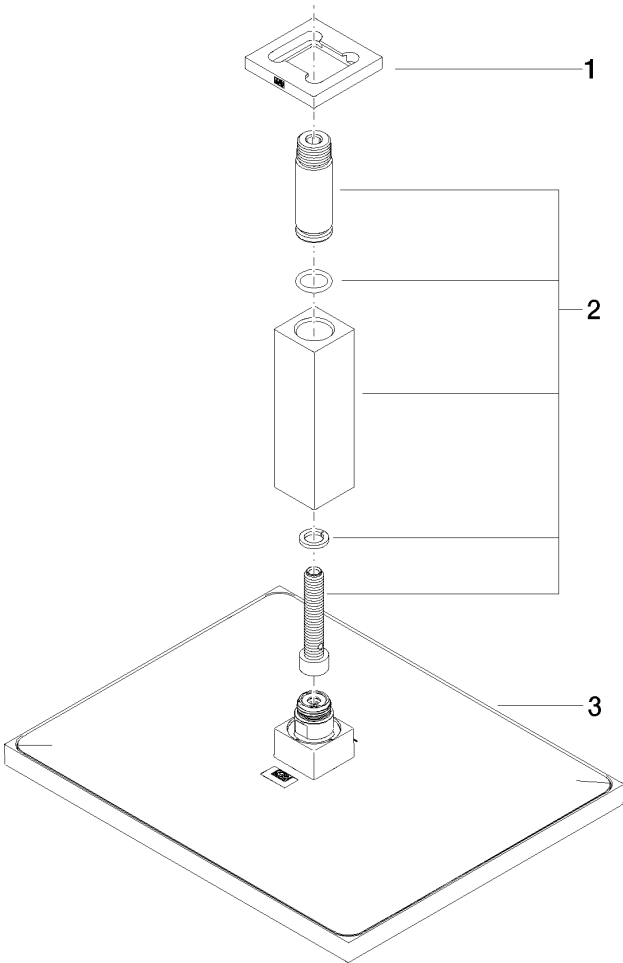
28 775 980 Product version from 3/13/2017

Certificates

IAPMO_4976

Rain shower with ceiling fixing 300 x 240 mm - Brushed Dark Platinum

28 775 980 Product version from 3/13/2017



Spare parts list

No.	Item Number	Name	Quantity used	Delivery time
1	09 27 98 017-99	rosette	1	20
2	90 11 10 092 00-99	connection	1	20
3	04 12 05 063 10-99	shower	1	20