

LULU Rain shower with wall fixing 300 x 240 mm - Chrome

LULU

28 786 710 Product version from 3/13/2017



- 450mm projection
- PURE RAIN, max. flow rate 6.8 l/min (at 3 bar)
- Function from: 6 l/min
- with anti-scale system
- rain shower 300 x 240mm
- rosette 78 x 60 mm
- 1/2" connection
- quick clearing
- This product reduces water consumption by 28% (compared to requirements of EPAAct '92)
- This product can contribute to Water Use Reduction in LEED® Green Building Rating
- This product can help a building meet the requirements of Green Building Rating Systems, e.g. LEED®, BREEAM®, DGNB



Chrome

28 786 710-00 0010



Brushed Platinum

28 786 710-06 0010

Required miscellaneous



Concealed wall elbow -

- max. recess depth 163 mm
- min. recess depth 90 mm

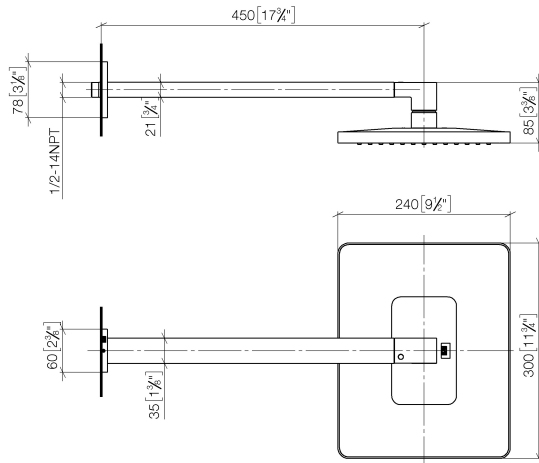
35 085 970-90
0010

LULU Rain shower with wall fixing 300 x 240 mm - Chrome

LULU

28 786 710 Product version from 3/13/2017

mm [inches]



Codes & Standards

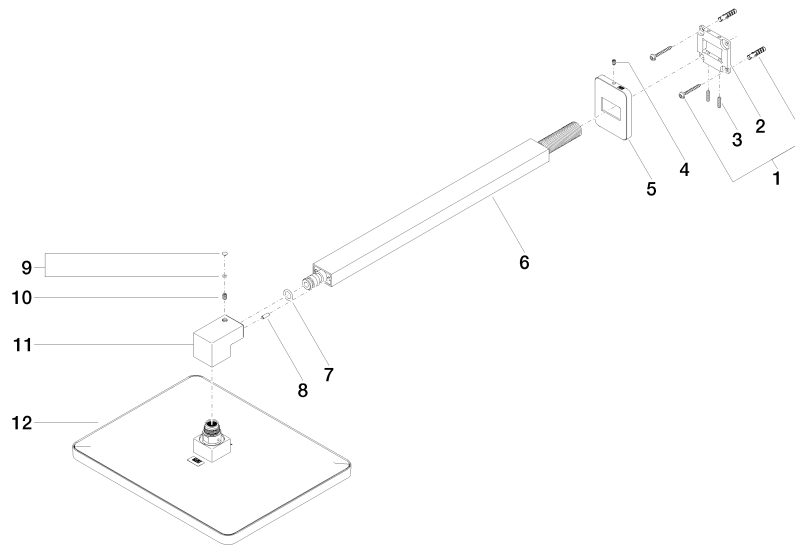
ASME A112.18.1	California Energy Commission (CEC)	cUPC	EPA WaterSense
----------------	------------------------------------	------	----------------

WaterSense



Certificates and sustainability

IAPMO_4976 IAPMO_11777



Spare parts list

No.	Item Number	Name	Quantity used	Delivery time
12	04 12 05 062 10-00	shower	1.00	10
11	09 17 01 180-00	connection	1.00	10
6	04 28 22 247 20-00	pipe	1.00	10
8	09 31 11 040 90	pin	1.00	2
10	09 31 11 036 90	pin	1.00	2
5	09 27 71 019-00	rosette	1.00	10
9	90 31 20 087 00-00	plug	1.00	10
4	09 31 11 048 90	pin	1.00	2
3	09 31 11 084 90	pin	2.00	2
2	09 30 11 160 90	disc	1.00	2
1	04 30 31 032 00 90	fixing set	1.00	2
7	90 14 10 011 00 90	seal	1.00	2