

VAIA Wall-mounted valve cold water without pop-up waste - Brushed Durabronze (23kt Gold)

VAIA

30 010 809



- 151mm projection
- fixed spout
- circular, air-enriched flow
- adapter with male thread 3/4"
- hole diameter 35 mm
- rosette Ø 60 mm
- max. flow 4.5 l/min
- lead-free
- This product can help a building meet the requirements of Green Building Rating Systems, e.g. LEED®, BREEAM®, DGNB

	Brushed Durabronze (23kt Gold)	30 010 809-28 0010
	Chrome	30 010 809-00 0010
	Brushed Platinum	30 010 809-06 0010
	Platinum	30 010 809-08 0010
	Dark Chrome	30 010 809-19 0010
	Brushed Bronze	30 010 809-42 0010
	Brushed Champagne (22kt Gold)	30 010 809-46 0010
	Champagne (22kt Gold)	30 010 809-47 0010
	Brushed Dark Platinum	30 010 809-99 0010

Recommended miscellaneous

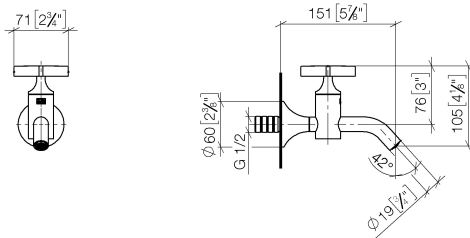


- Concealed wall elbow -** 35 085 970-90
 •min. recess depth 90 mm 0010
 •max. recess depth 163 mm

VAIA Wall-mounted valve cold water without pop-up waste - Brushed
Durabron (23kt Gold)

VAIA

30 010 809
mm [inches]

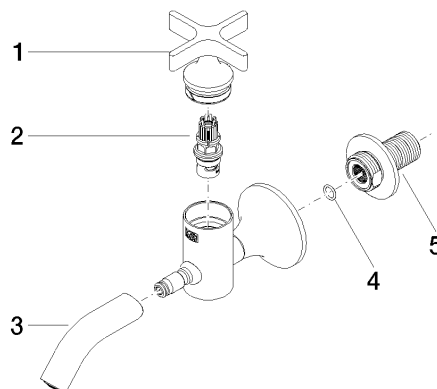


Codes & Standards

ADA	California Energy Commission (CEC)	NSF372	NSF61
-----	--	--------	-------

Certificates and sustainability

IAPMO_6397	IAPMO_N-4976
------------	--------------



Spare parts list

No.	Item Number	Name	Quantity used	Delivery time
5	09 24 03 269 90	nipple	1.00	2
2	90 90 03 175 00 90	top	1.00	2
3	90 28 22 381 01-28	spout	1.00	20
1	90 20 66 025 00-28	handle	1.00	20
4	90 14 10 060 00 90	seal	1.00	2