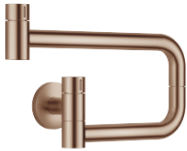


## TARA ULTRA POT FILLER Cold-water valve - Brushed Bronze

TARA ULTRA

30 805 875 Product version from 10/1/2024



- 500mm projection
- pivoting spout
- laminar flow
- cold water only
- max. flow 5.7 l/min at 3 bar flow pressure
- two valves
- min. recess depth 125 mm
- max. recess depth 80 mm
- lead-free
- This product can help a building meet the requirements of Green Building Rating Systems, e.g. LEED®, BREEAM®, DGNB
- WRAS

	Brushed Bronze	30 805 875-42
	Chrome	30 805 875-00
	Brushed Platinum	30 805 875-06
	Platinum	30 805 875-08
	Durabrass (23kt Gold)	30 805 875-09
	Dark Chrome	30 805 875-19
	Brushed Durabrass (23kt Gold)	30 805 875-28
	Brushed Champagne (22kt Gold)	30 805 875-46
	Champagne (22kt Gold)	30 805 875-47
	Brushed Chrome	30 805 875-93
	Brushed Dark Platinum	30 805 875-99

### Required miscellaneous



- POT FILLER Concealed wall elbow** 35 087 970-90  
- 0010
- min. recess depth 80 mm
  - max. recess depth 125 mm





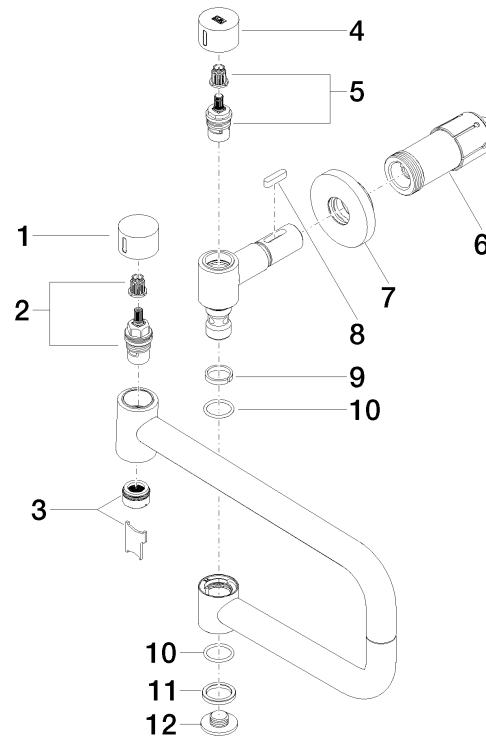
TARA ULTRA POT FILLER Cold-water valve - Brushed Bronze

TARA ULTRA

30 805 875 Product version from 10/1/2024

Certificates and sustainability

LGA_29	IAPMO_N-4	IAPMO_6	WRAS_240702	IAPMO_4976 (
--------	-----------	---------	-------------	--------------



## Spare parts list

No.	Item Number	Name	Quantity used	Delivery time
8	90 16 04 001 00 90	spring	1.00	2
6	90 30 01 213 00 90	connection	1.00	2
5	90 90 03 171 00 90	top	1.00	2
3	90 23 01 026 11-42	aerator	1.00	30
9	09 28 10 136 90	ring	1.00	2
4	09 20 62 027-42	handle	1.00	-
Spare part can no longer be ordered, please order the replacement item				
12	09 21 02 028-42	lid	1.00	60
2	90 90 03 146 00 90	top	1.00	2
10	09 14 10 015 90	seal	2.00	2
1	09 20 62 025-42	handle	1.00	60
11	09 28 10 139 90	ring	1.00	2
7	90 27 87 039 00-42	rosette	1.00	30