

## LOT BAR TAP Two-hole mixer with individual rosettes - Brushed Durabrand (23kt Gold)

LOT

32 805 680



- 165mm projection
  - pivotable spout 360°
  - air-enriched flow
  - height of mixer 230 mm
  - height up to laminar flow regulator 205 mm
  - individual rosette 55 x 55 mm
  - hole diameter spout 35 mm
  - single-lever mixer hole diameter 44 mm
  - 2 x pressure hose with 3/8" cap nut
  - max. flow 5.7 l/min at 3 bar flow pressure
  - lead-free
  - This product can help a building meet the requirements of Green Building Rating Systems, e.g. LEED®, BREEAM®, DGNB
- Operating unit can be positioned freely.

	Brushed Durabrand (23kt Gold)	32 805 680-28 0010
	Chrome	32 805 680-00 0010
	Brushed Platinum	32 805 680-06 0010
	Platinum	32 805 680-08 0010
	Dark Chrome	32 805 680-19 0010
	Brushed Champagne (22kt Gold)	32 805 680-46 0010
	Champagne (22kt Gold)	32 805 680-47 0010
	Brushed Dark Platinum	32 805 680-99 0010

### Recommended miscellaneous

**AIR SWITCH Control button -  
Brushed Durabrand (23kt Gold)** 10 714 970-28



### Recommended miscellaneous

**Dispenser with rosette - Brushed  
Durabrand (23kt Gold)** 82 439 970-28

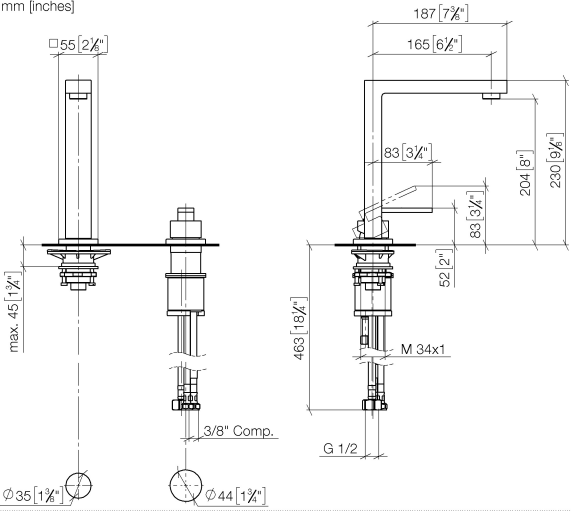




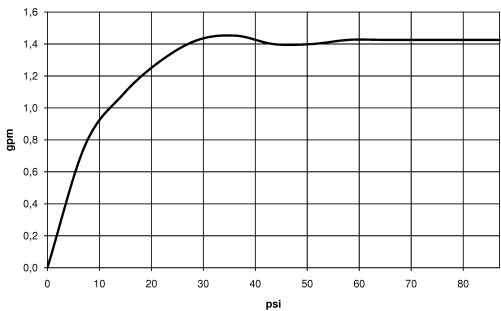
LOT BAR TAP Two-hole mixer with individual rosettes - Brushed Durabronz  
(23kt Gold)

LOT

32 805 680  
mm [inches]



Flow rate chart



Codes & Standards

ADA	ASME A112.18.1/CSA B125.1	California Energy Commission (CEC)	NSF/ANSI 372
NSF/ANSI/CAN 61	NSF372	NSF61	



LOT BAR TAP Two-hole mixer with individual rosettes - Brushed Durabrass  
(23kt Gold)

---

LOT

32 805 680

Certificates

---

IAPMO\_N-4

IAPMO\_6

LOT BAR TAP Two-hole mixer with individual rosettes - Brushed Durabrass  
(23kt Gold)

LOT

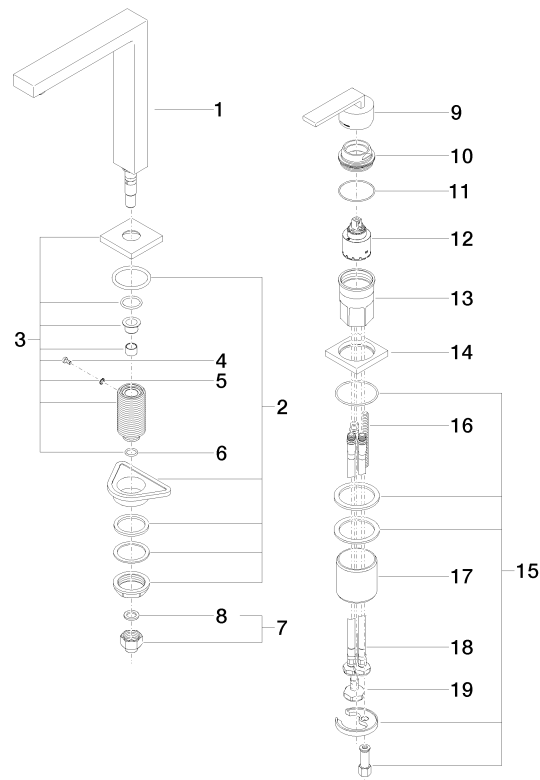
32 805 680

Product version up to 5/10/2021

Product version from 5/10/2021

**Product version from 6/1/2022**

Parts for other finishes can be found here: [Chrome](#)





## LOT BAR TAP Two-hole mixer with individual rosettes - Brushed Durabrass (23kt Gold)

LOT

32 805 680

### Spare parts list

Product version up to 5/10/2021

Product version from 5/10/2021

### Product version from 6/1/2022

No.	Item Number	Name	Quantity used	Delivery time
	90 11 06 192 06-28	spout	20	20