

LOT BAR TAP Two-hole mixer with individual rosettes - Brushed Dark Platinum

32 805 680 Product version from 6/1/2022



- 165mm projection
- pivotable spout 360°
- air-enriched flow
- height of mixer 230 mm
- height up to laminar flow regulator 205 mm
- individual rosette 55 x 55 mm
- hole diameter spout 35 mm
- single-lever mixer hole diameter 44 mm
- 2 x pressure hose with 3/8" cap nut
- max. flow 5.7 l/min at 3 bar flow pressure
- lead-free
- This product can help a building meet the requirements of Green Building Rating Systems, e.g. LEED®, BREEAM®, DGNB

Operating unit can be positioned freely.

	Brushed Dark Platinum	32 805 680-99 0010
	Chrome	32 805 680-00 0010
	Brushed Platinum	32 805 680-06 0010
	Platinum	32 805 680-08 0010
	Dark Chrome	32 805 680-19 0010
	Brushed Durabronze (23kt Gold)	32 805 680-28 0010
	Brushed Champagne (22kt Gold)	32 805 680-46 0010
	Champagne (22kt Gold)	32 805 680-47 0010

Recommended miscellaneous

Dispenser with rosette - Brushed Dark Platinum 82 439 970-99



Recommended miscellaneous

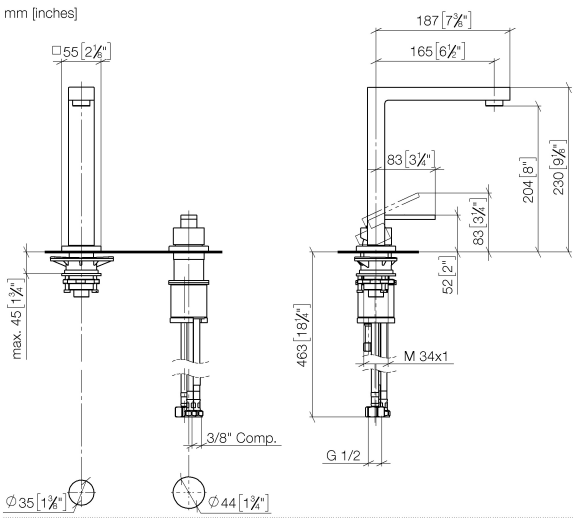
AIR SWITCH Control button - Brushed Dark Platinum 10 714 970-99



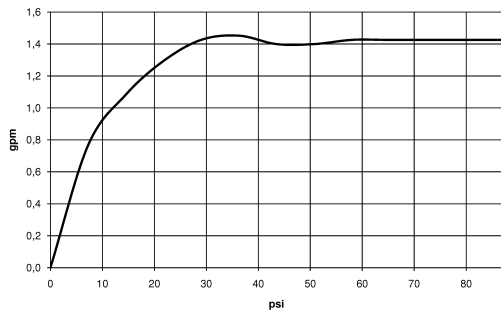


LOT BAR TAP Two-hole mixer with individual rosettes - Brushed Dark Platinum

32 805 680 Product version from 6/1/2022



Flow rate chart



Codes & Standards

ADA	ASME A112.18.1	ASME A112.18.1/CSA B125.1	California Energy Commission (CEC)
cUPC	NSF/ANSI 372	NSF/ANSI/CAN 61	NSF372
NSF61			



LOT BAR TAP Two-hole mixer with individual rosettes - Brushed Dark Platinum

32 805 680 Product version from 6/1/2022

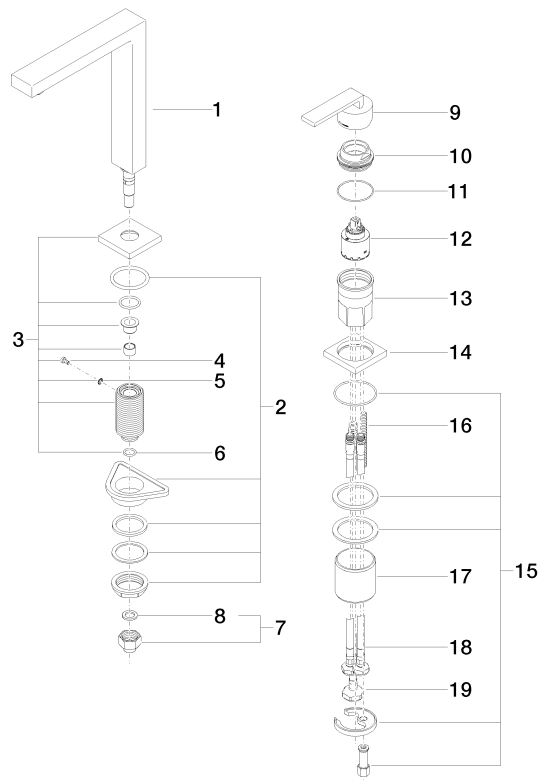
Certificates

IAPMO_N-4 IAPMO_6 IAPMO_4976 (

LOT BAR TAP Two-hole mixer with individual rosettes - Brushed Dark Platinum

32 805 680 Product version from 6/1/2022

Parts for other
finishes can be found
here: [Chrome](#)



Spare parts list

No.	Item Number	Name	Quantity used	Delivery time
1	90 11 06 192 06-99	spout	1	20
2	04 23 10 044 01 90	fixing set	1	2
3	90 27 78 023 00-99	rosette	1	20
4	09 30 30 057 90	screw	1	2
5	09 30 11 028 90	disc	1	2
6	90 14 10 077 00 90	seal	1	2
7	04 24 04 166 10 90	nipple	1	2
8	90 14 20 002 00 90	seal	1	2
9	90 20 78 040 00-99	handle	1	20
10	09 24 04 142-99	nut	1	20
11	09 14 10 037 90	seal	1	2
12	90 15 05 045 00 90	cartridge	1	2
13	09 30 01 100 10 90	sleeve	1	2
14	09 27 78 007-99	rosette	1	20
15	04 30 11 038 02 90	fixing set	1	2
16	09 31 11 011 90	pin	1	2
17	09 18 40 079 90	sleeve	1	2
18	04 30 04 106 00 90	hose	2	2
19	04 30 04 019 00 90	hose	1	2