



LISSÉ Single-lever bath mixer for wall mounting without shower set - Brushed Light Gold

33 200 845 Product version from 4/1/2024



- 190-200mm projection
 - circular normal flow
 - automatic bath/shower diverter
 - 3/8" shower outlet
 - slide-on rosettes Ø 60 mm
 - 1/2" connection
 - gauge 150 mm - 15 mm
 - max. flow 13.5 l/min at 3 bar flow pressure
 - WRAS
- Intrinsic protection against back flow.**
- Note: Local building codes may require the use of an anti-scald device. Please refer to remote pressure balance valve (35 910 970 90)**
- Intrinsic protection against back flow.
- Note: Local building codes may require the use of an anti-scald device. Please refer to remote pressure balance valve (35 910 970 90)

	Brushed Light Gold	33 200 845-27
	Chrome	33 200 845-00
	Brushed Platinum	33 200 845-06
	Dark Chrome	33 200 845-19
	Matte Black	33 200 845-33
	Brushed Chrome	33 200 845-93
	Brushed Dark Platinum	33 200 845-99

Required miscellaneous

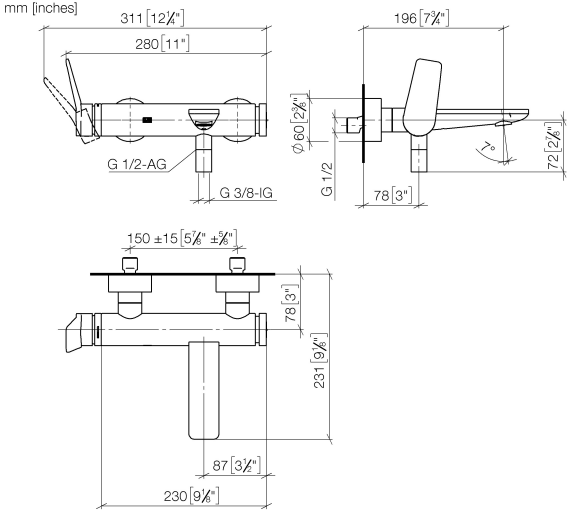


- Concealed adapter -** 35 080 970-90
- please order two adapters (USA only) 0010

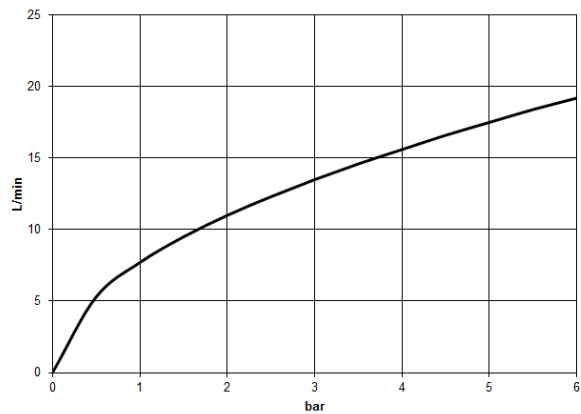


LISSE Single-lever bath mixer for wall mounting without shower set - Brushed Light Gold

33 200 845 Product version from 4/1/2024



Flow rate chart



Codes & Standards

California Energy Commission (CEC)	DIN 4109	ISO 3822	Scottish Water Byelaws
UK Water Supply Regulations	Ü-Zeichen		



LISSE Single-lever bath mixer for wall mounting without shower set - Brushed
Light Gold

33 200 845 Product version from 4/1/2024

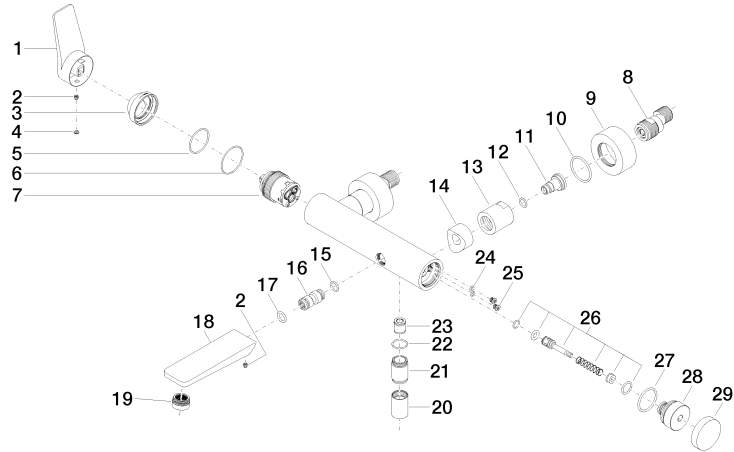
Certificates

LGA_9

WRAS_2311

LISSE Single-lever bath mixer for wall mounting without shower set - Brushed Light Gold

33 200 845 Product version from 4/1/2024





LISSE Single-lever bath mixer for wall mounting without shower set - Brushed Light Gold

33 200 845 Product version from 4/1/2024

Spare parts list

No.	Item Number	Name	Quantity used	Delivery time
1	09 20 84 021-27	handle	1	60
2	90 31 11 030 00 90	pin	1	2
3	09 28 30 032-27	cover	1	60
4	90 31 20 087 00-27	plug	1	30
5	09 14 10 102 90	seal	1	2
6	09 14 10 190 90	seal	1	2
7	90 15 05 046 01 90	cartridge	1	2
8	04 11 04 030 00 90	connection	2	2
9	09 27 62 004-27	rosette	2	60
10	09 14 10 119 90	seal	2	2
11	09 29 05 005 20-27	nipple	2	-
Spare part can no longer be ordered, please order the replacement item				
12	09 14 10 008 90	seal	2	2
13	09 23 10 048-27	nut	2	60
14	09 18 40 059-27	sleeve	2	60
15	09 14 10 003 90	seal	1	2
16	09 24 04 043 90	nipple	1	2
17	90 14 10 011 00 90	seal	1	2
18	09 11 84 012-27	spout	1	60
19	90 23 01 161 00-27	aerator	1	-
Spare part can no longer be ordered, please order the replacement item				
20	90 21 02 069 00-27	cover	1	30
21	09 24 03 115 20-27	nipple	1	60
22	90 14 10 032 00 90	seal	1	2
23	90 23 01 141 00 90	back-flow preventer	1	2
24	09 14 10 001 90	seal	1	2
25	09 30 30 113 20 90	screw	1	2
26	90 31 09 032 00-27	diverter	1	30
27	09 14 10 101 90	seal	1	2
28	09 21 10 035 20-27	nipple	1	60
29	09 20 62 031-27	handle	1	60