

CYO Single-lever basin mixer with pop-up waste - Dark Chrome

CYO



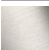


33 500 811



- 143mm projection
- 1 1/4" pop-up waste
- fixed spout
- rectangular, air-enriched flow
- height of mixer 180 mm
- height up to aerator 128 mm
- hole diameter 35 mm
- max. flow 4.5 l/min
- 2 x pressure hose with 3/8" cap nut
- lead-free
- This product can help a building meet the requirements of Green Building Rating Systems, e.g. LEED®, BREEAM®, DGNB

Only suitable for basins with an overflow.

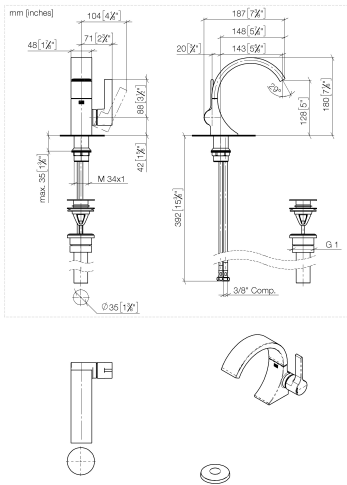
Distance from centre of tap hole to wall min. 55 mm
or to front edge of basin min. 40 mm.

	Dark Chrome	33 500 811-19 0010
	Chrome	33 500 811-00 0010
	Brushed Platinum	33 500 811-06 0010
	Brushed Durabronze (23kt Gold)	33 500 811-28 0010
	Brushed Dark Platinum	33 500 811-99 0010

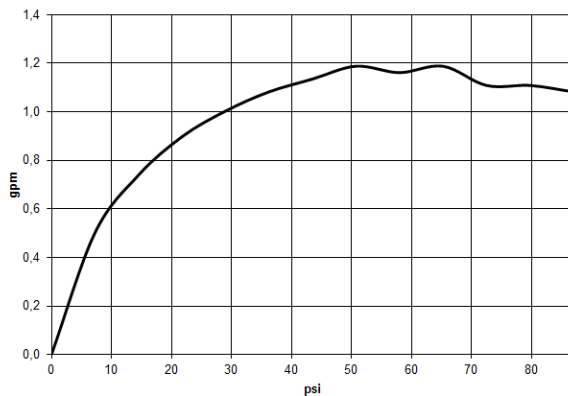
CYO Single-lever basin mixer with pop-up waste - Dark Chrome

CYO

33 500 811



Flow rate chart



Codes & Standards

California Energy
Commission
(CEC)

NSF372

NSF61



CYO Single-lever basin mixer with pop-up waste - Dark Chrome

CYO

33 500 811

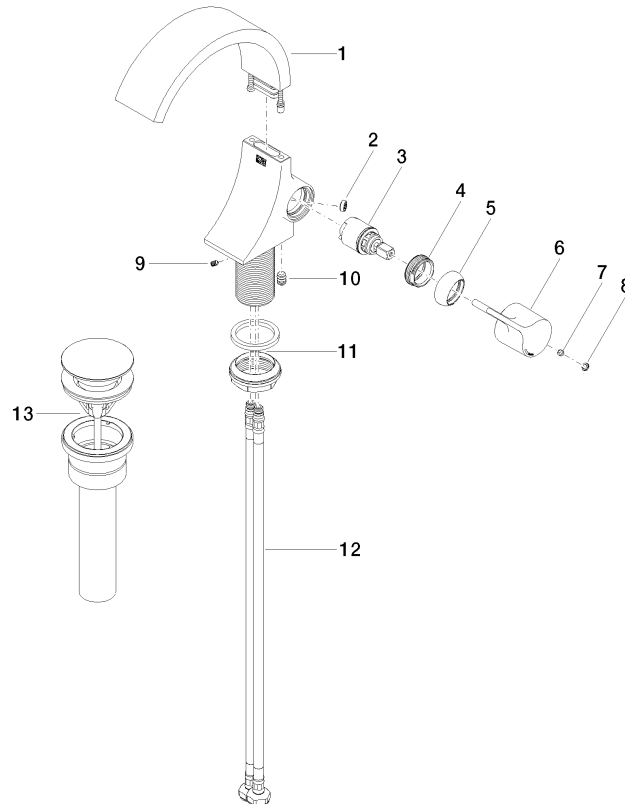
Certificates

IAPMO_6397

IAPMO_N-4976

33 500 811

Parts for other
finishes can be found
here: [Chrome](#)





CYO Single-lever basin mixer with pop-up waste - Dark Chrome

CYO

33 500 811

Spare parts list

No.	Item Number	Name	Quantity used	Delivery time
	90 11 70 012 01-19	spout	14	20