

LISSÉ Single-lever basin mixer with pop-up waste - Brushed Chrome



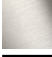




LISSÉ

33 500 845 Product version from 3/9/2016 to 10/31/2018

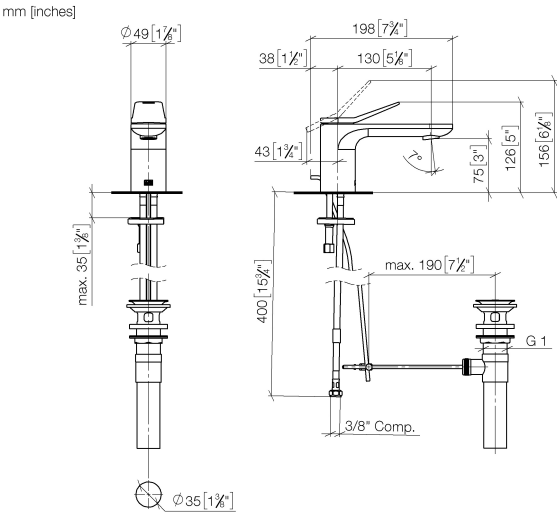


- 130mm projection
- 1 1/4" pop-up waste
- fixed spout
- circular, air-enriched flow
- height of mixer 127 mm
- height up to aerator 75 mm
- hole diameter 35 mm
- 2 x pressure hose with 3/8" cap nut
- max. flow 4.5 l/min
- lead-free
- This product can help a building meet the requirements of Green Building Rating Systems, e.g. LEED®, BREEAM®, DGNB

Only suitable for basins with an overflow.

	Brushed Chrome	33 500 845-93 0010
	Chrome	33 500 845-00 0010
	Brushed Platinum	33 500 845-06 0010
	Dark Chrome	33 500 845-19 0010
	Brushed Light Gold	33 500 845-27 0010
	Matte Black	33 500 845-33 0010
	Brushed Dark Platinum	33 500 845-99 0010

33 500 845 Product version from 3/9/2016 to 10/31/2018



Codes & Standards

ADA	ASME A112.18.1	California Energy Commission (CEC)	cUPC
EPA WaterSense	NSF372	NSF61	WaterSense



Certificates and sustainability

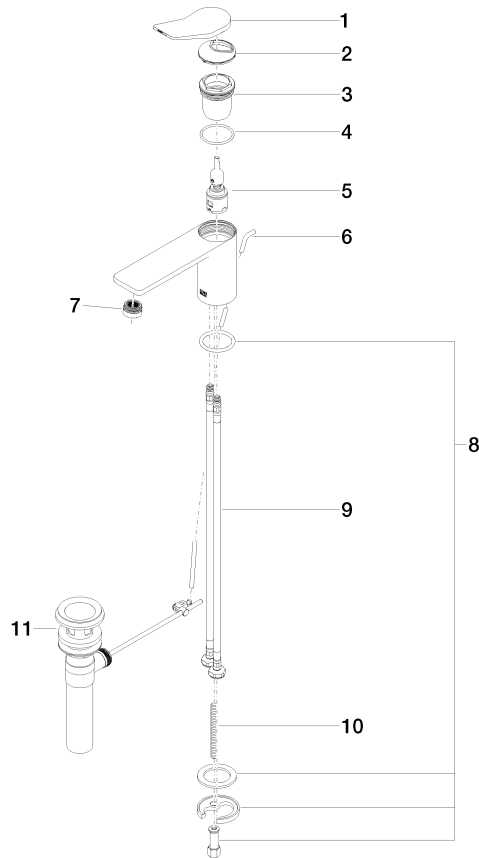
IAPMO_N-4976	IAPMO_6397	IAPMO_8834	IAPMO_4976 (
--------------	------------	------------	--------------

LISSÉ Single-lever basin mixer with pop-up waste - Brushed Chrome

LISSÉ

33 500 845 Product version from 3/9/2016 to 10/31/2018

Parts for other
finishes can be found
here: [Chrome](#)



Spare parts list

No.	Item Number	Name	Quantity used	Delivery time
8	04 30 11 038 75 90	fixing set	1.00	2
4	09 14 10 038 90	seal	1.00	2
5	90 15 05 042 01 90	cartridge	1.00	2
6	09 31 09 120-93	pull-rod	1.00	20
3	09 23 10 123 90	nut	1.00	2
2	09 28 30 034 90	cover	1.00	2
1	90 20 84 020 00-93	handle	1.00	20
9	04 30 04 102 00 90	High pressure hose 3/8" -	2.00	2
10	09 31 11 011 90	pin	1.00	2
7	90 23 01 161 03-93	aerator	1.00	-
Spare part can no longer be ordered, please order the replacement item				
11	90 11 01 023 00-93	pop-up waste	1.00	20