

TARA Single-lever basin mixer with pop-up waste - Brushed Bronze

TARA

33 500 882



- 137mm projection
- pivotable spout 360°
- circular, air-enriched flow
- height of mixer 295 mm
- height up to aerator 187 mm
- hole diameter 35 mm
- 2x screw-in M 8 x 1 pressure hose, leak-tested
- max. flow 4.5 l/min
- lead-free
- This product can help a building meet the requirements of Green Building Rating Systems, e.g. LEED®, BREEAM®, DGNB

Only suitable for basins with an overflow.

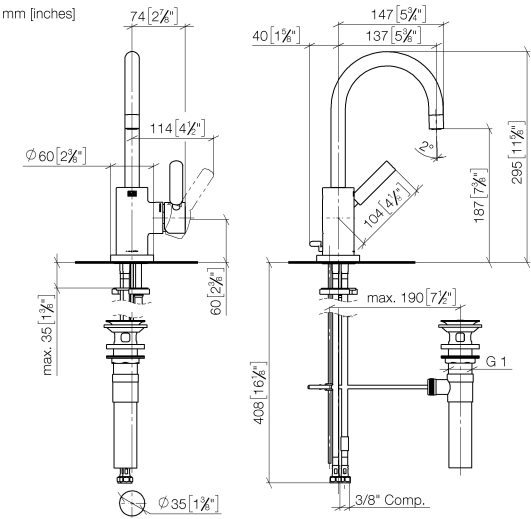
| | | |
|--|--------------------------------|--------------------|
|  | Brushed Bronze | 33 500 882-42 0010 |
|  | Chrome | 33 500 882-00 0010 |
|  | Brushed Platinum | 33 500 882-06 0010 |
|  | Platinum | 33 500 882-08 0010 |
|  | Dark Chrome | 33 500 882-19 0010 |
|  | Brushed Durabronze (23kt Gold) | 33 500 882-28 0010 |
|  | Matte Black | 33 500 882-33 0010 |
|  | Brushed Champagne (22kt Gold) | 33 500 882-46 0010 |
|  | Champagne (22kt Gold) | 33 500 882-47 0010 |
|  | Brushed Chrome | 33 500 882-93 0010 |
|  | Brushed Dark Platinum | 33 500 882-99 0010 |



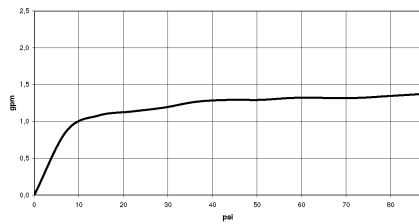
TARA Single-lever basin mixer with pop-up waste - Brushed Bronze

TARA

33 500 882



Flow rate chart



Codes & Standards

California Energy
Commission
(CEC)

NSF372

NSF61



TARA Single-lever basin mixer with pop-up waste - Brushed Bronze

TARA

33 500 882

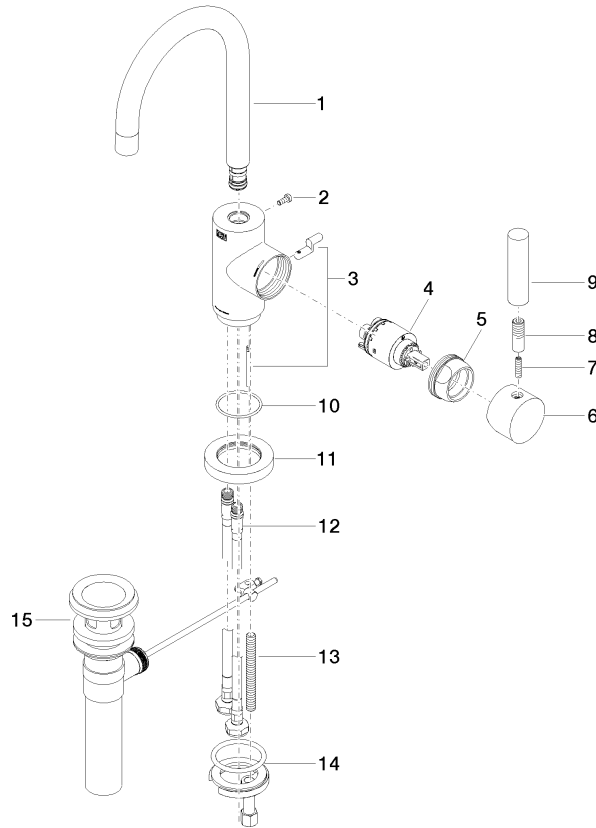
Certificates

IAPMO_6397

IAPMO_N-4976

Product version from 4/1/2024

Parts for other
finishes can be found
here: [Chrome](#)





TARA Single-lever basin mixer with pop-up waste - Brushed Bronze

TARA

33 500 882

Spare parts list

Product version from 4/1/2024

| No. | Item Number | Name | Quantity used | Delivery time |
|-----|--------------------|-------|---------------|---------------|
| | 90 28 22 371 01-42 | spout | 16 | 30 |