

TARA Single-lever basin mixer with pop-up waste - Brushed Dark Platinum

TARA

33 500 882 Product version from 4/1/2024



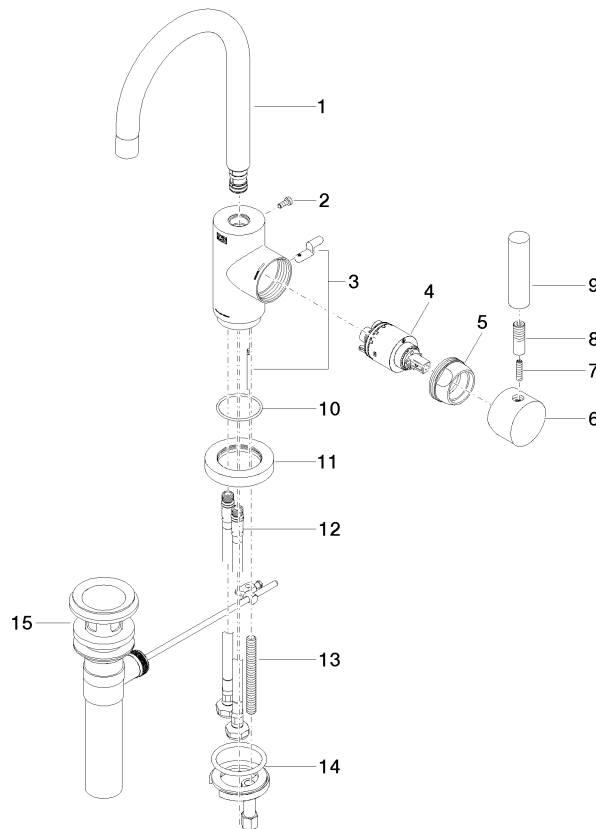
- 137mm projection
- pivotable spout 360°
- circular, air-enriched flow
- height of mixer 295 mm
- height up to aerator 187 mm
- hole diameter 35 mm
- 2x screw-in M 8 x 1 pressure hose, leak-tested
- max. flow 4.5 l/min
- lead-free
- This product can help a building meet the requirements of Green Building Rating Systems, e.g. LEED®, BREEAM®, DGNB

Only suitable for basins with an overflow.

	Brushed Dark Platinum	33 500 882-99 0010
	Chrome	33 500 882-00 0010
	Brushed Platinum	33 500 882-06 0010
	Platinum	33 500 882-08 0010
	Dark Chrome	33 500 882-19 0010
	Brushed Durabronze (23kt Gold)	33 500 882-28 0010
	Matte Black	33 500 882-33 0010
	Brushed Dark Brass	33 500 882-39 0010
	Brushed Bronze	33 500 882-42 0010
	Brushed Champagne (22kt Gold)	33 500 882-46 0010
	Champagne (22kt Gold)	33 500 882-47 0010
	Brushed Chrome	33 500 882-93 0010

33 500 882 Product version from 4/1/2024

Parts for other
finishes can be found
here: [Chrome](#)



Spare parts list

No.	Item Number	Name	Quantity used	Delivery time
	3 04 20 16 031 80-99	pull-rod	1.00	60
	9 11 170 880-99	handle	1.00	20
	1 90 28 22 371 01-99	spout	1.00	20
	13 09 31 11 011 90	pin	1.00	2
	7 09 31 11 010 90	pin	1.00	2
	14 04 30 11 038 00 90	fixing set	1.00	2
	4 90 15 05 065 00 90	cartridge	1.00	2
	12 04 30 04 106 00 90	hose	2.00	2
	10 09 14 10 034 90	seal	1.00	2
	6 90 20 88 040 00-99	handle	1.00	20
	2 09 30 30 054 90	screw	1.00	2
	5 09 24 04 107-99	nut	1.00	20
	11 09 28 10 055-99	rosette	1.00	20
	15 90 11 01 023 00-99	pop-up waste	1.00	20
	8 90 24 04 048 00-99	nipple	1.00	20