

META META SLIM Single-lever basin mixer with pop-up waste - Chrome

META

33 501 662



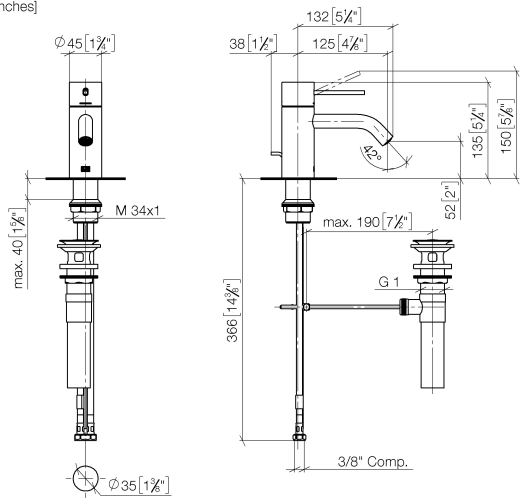
- 125mm projection
- 1 1/4" pop-up waste
- fixed spout
- circular, air-enriched flow
- height of mixer 134 mm
- height up to aerator 52 mm
- hole diameter 35 mm
- 2 x pressure hose with 3/8" cap nut
- max. flow 4.5 l/min
- lead-free
- This product can help a building meet the requirements of Green Building Rating Systems, e.g. LEED®, BREEAM®, DGNB

Only suitable for basins with an overflow.

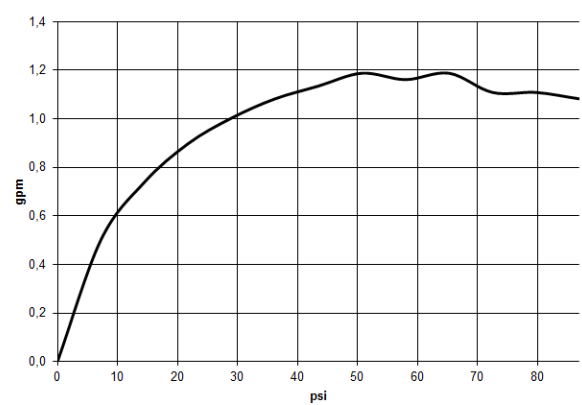
| | | |
|--|--------------------------------|--------------------|
|  | Chrome | 33 501 662-00 0010 |
|  | Brushed Platinum | 33 501 662-06 0010 |
|  | Platinum | 33 501 662-08 0010 |
|  | Dark Chrome | 33 501 662-19 0010 |
|  | Light Gold | 33 501 662-26 0010 |
|  | Brushed Light Gold | 33 501 662-27 0010 |
|  | Brushed Durabronze (23kt Gold) | 33 501 662-28 0010 |
|  | Red | 33 501 662-29 0010 |
|  | Orange | 33 501 662-30 0010 |
|  | Dark Green | 33 501 662-31 0010 |
|  | Matte Black | 33 501 662-33 0010 |
|  | Brushed Bronze | 33 501 662-42 0010 |
|  | Brushed Champagne (22kt Gold) | 33 501 662-46 0010 |
|  | Champagne (22kt Gold) | 33 501 662-47 0010 |
|  | Brushed Chrome | 33 501 662-93 0010 |
|  | Brushed Dark Platinum | 33 501 662-99 0010 |

33 501 662


mm [inches]



Flow rate chart



Codes & Standards

| | | | |
|--------|----------------|---------------------------|--|
| ADA | ASME A112.18.1 | ASME A112.18.1/CSA B125.1 | California Energy Commission (CEC) |
| cUPC | EPA WaterSense | NSF/ANSI 372 | NSF/ANSI/CAN 61 |
| NSF372 | NSF61 | Water Sense | WaterSense  |



META META SLIM Single-lever basin mixer with pop-up waste - Chrome

META

33 501 662

Certificates

IAPMO_4976

IAPMO_8834

IAPMO_6397

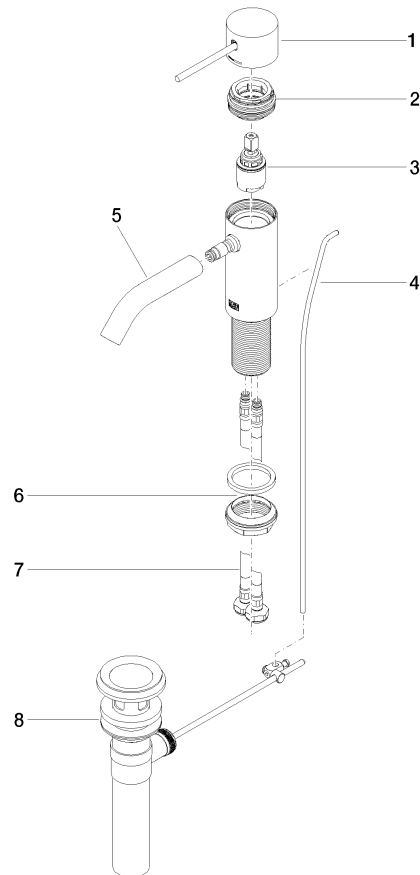
IAPMO_N-4976

33 501 662

Product version up to 1/23/2020

Product version from 1/23/2020

Product version from 10/1/2021





META META SLIM Single-lever basin mixer with pop-up waste - Chrome

META

33 501 662

Spare parts list

Product version up to 1/23/2020

Product version from 1/23/2020

Product version from 10/1/2021

| No. | Item Number | Name | Quantity used | Delivery time |
|-----|--------------------|--------|---------------|---------------|
| | 90 20 66 020 00-00 | handle | 9 | 10 |