

## META Single-lever basin mixer with pop-up waste - Brushed Dark Brass

META

33 504 660 Product version from 5/1/2022 to 4/1/2025



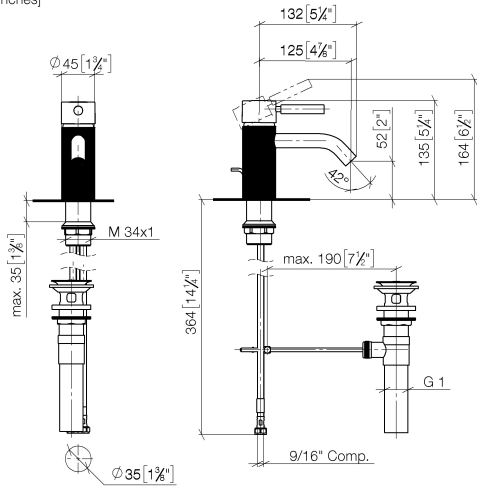
- 125mm projection
- With linear texture
- fixed spout
- circular, air-enriched flow
- height of mixer 135 mm
- height up to aerator 52 mm
- hole diameter 35 mm
- 2x screw-in M 8 x 1 pressure hose, leak-tested
- max. flow 4.5 l/min
- lead-free
- This product can help a building meet the requirements of Green Building Rating Systems, e.g. LEED®, BREEAM®, DGNB

Only suitable for basins with an overflow.

	Brushed Dark Brass	33 504 660-39 0010
	Chrome	33 504 660-00 0010
	Brushed Platinum	33 504 660-06 0010
	Light Gold	33 504 660-26 0010
	Brushed Light Gold	33 504 660-27 0010
	Matte Black	33 504 660-33 0010
	Brushed Bronze	33 504 660-42 0010
	Brushed Champagne (22kt Gold)	33 504 660-46 0010
	Champagne (22kt Gold)	33 504 660-47 0010
	Brushed Chrome	33 504 660-93 0010
	Brushed Dark Platinum	33 504 660-99 0010

33 504 660 Product version from 5/1/2022 to 4/1/2025

mm [inches]



### Codes & Standards

ADA	California Energy Commission (CEC)	NSF372	NSF61
-----	--	--------	-------

### Certificates and sustainability

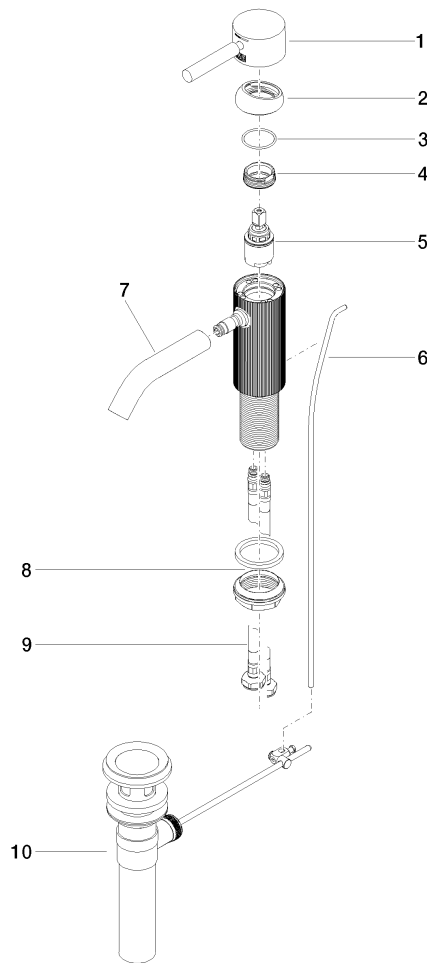
IAPMO\_N-4976 IAPMO\_6397

## META Single-lever basin mixer with pop-up waste - Brushed Dark Brass

META

33 504 660 Product version from 5/1/2022 to 4/1/2025

Parts for other  
finishes can be found  
here: [Chrome](#)



### Spare parts list

No.	Item Number	Name	Quantity used	Delivery time
	3 09 14 10 091 90	seal	1.00	2
	2 09 28 30 041-39	cover	1.00	60
	6 09 31 09 110-39	pull-rod	1.00	60
	7 90 11 06 206 01-39	spout	1.00	30
	1 90 20 66 029 00-39	handle	1.00	30
	5 90 15 05 044 00 90	cartridge	1.00	2
	8 04 23 10 044 07 90	fixing set	1.00	2
	10 90 11 01 023 00-39	pop-up waste	1.00	-
Spare part can no longer be ordered, please order the replacement item				
	4 09 24 04 266 90	nut	1.00	2
	9 04 30 04 102 00 90	High pressure hose 3/8" -	2.00	2