

## META Single-lever basin mixer with pop-up waste - Brushed Chrome

META

33 505 660 Product version from 5/1/2022 to 4/1/2025



- 125mm projection
- With faceted texture
- fixed spout
- circular, air-enriched flow
- height of mixer 135 mm
- height up to aerator 52 mm
- hole diameter 35 mm
- 2x screw-in M 8 x 1 pressure hose, leak-tested
- max. flow 4.5 l/min
- lead-free
- This product can help a building meet the requirements of Green Building Rating Systems, e.g. LEED®, BREEAM®, DGNB

Only suitable for basins with an overflow.

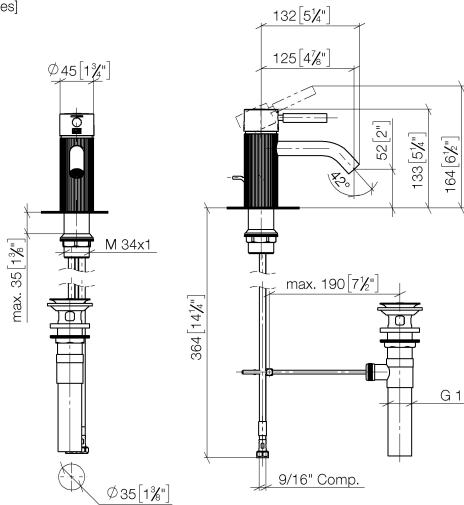
	Brushed Chrome	33 505 660-93 0010
	Chrome	33 505 660-00 0010
	Brushed Platinum	33 505 660-06 0010
	Dark Chrome	33 505 660-19 0010
	Light Gold	33 505 660-26 0010
	Brushed Light Gold	33 505 660-27 0010
	Matte Black	33 505 660-33 0010
	Brushed Dark Brass	33 505 660-39 0010
	Brushed Bronze	33 505 660-42 0010
	Brushed Champagne (22kt Gold)	33 505 660-46 0010
	Champagne (22kt Gold)	33 505 660-47 0010
	Brushed Dark Platinum	33 505 660-99 0010

## META Single-lever basin mixer with pop-up waste - Brushed Chrome

META

33 505 660 Product version from 5/1/2022 to 4/1/2025

mm [inches]



### Codes & Standards

ADA	ASME A112.18.1	California Energy Commission (CEC)	cUPC
EPA WaterSense	NSF372	NSF61	WaterSense



### Certificates and sustainability

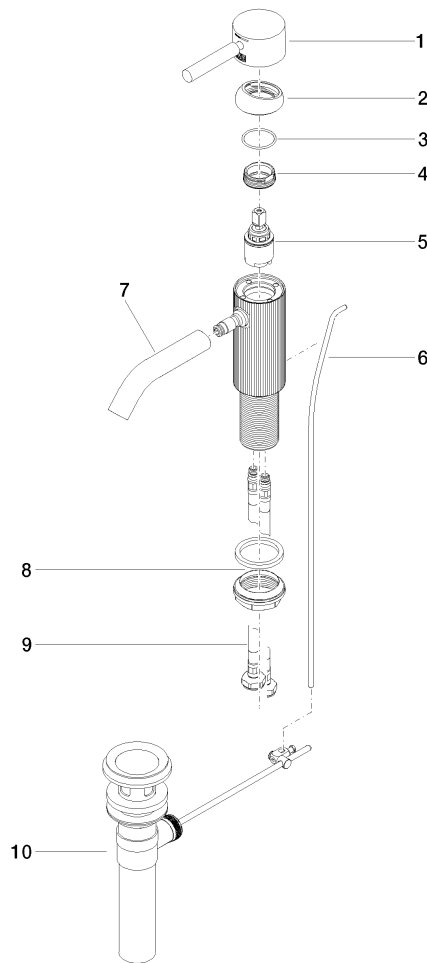
IAPMO\_N-4976 IAPMO\_6397 IAPMO\_8834 IAPMO\_4976 (

## META Single-lever basin mixer with pop-up waste - Brushed Chrome

META

33 505 660 Product version from 5/1/2022 to 4/1/2025

Parts for other  
finishes can be found  
here: [Chrome](#)



### Spare parts list

No.	Item Number	Name	Quantity used	Delivery time
8	04 23 10 044 07 90	fixing set	1.00	2
3	09 14 10 091 90	seal	1.00	2
2	09 28 30 041-93	cover	1.00	20
1	90 20 66 029 00-93	handle	1.00	20
7	90 11 06 206 01-93	spout	1.00	20
6	09 31 09 110-93	pull-rod	1.00	20
4	09 24 04 266 90	nut	1.00	2
5	90 15 05 044 00 90	cartridge	1.00	2
9	04 30 04 102 00 90	High pressure hose 3/8" -	2.00	2
10	90 11 01 023 00-93	pop-up waste	1.00	20