

VAIA Single-lever basin mixer with pop-up waste - Platinum

VAIA

33 505 809 Product version from 4/1/2025



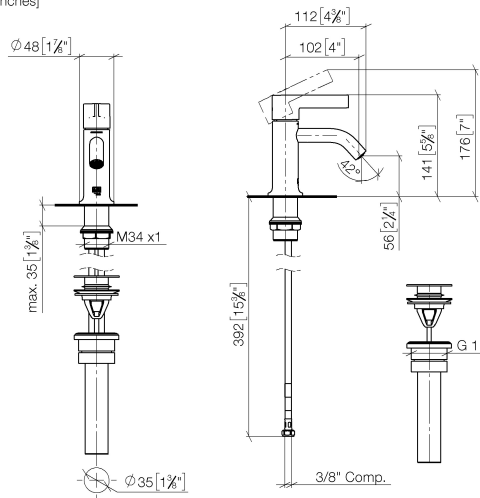
- 106mm projection
- fixed spout
- circular, air-enriched flow
- height of mixer 141 mm
- height up to aerator 56 mm
- hole diameter 35 mm
- 2 x pressure hose with 3/8" cap nut
- max. flow 4.5 l/min
- lead-free
- This product can help a building meet the requirements of Green Building Rating Systems, e.g. LEED®, BREEAM®, DGNB

Only suitable for basins with an overflow.

	Platinum	33 505 809-08 0010
	Chrome	33 505 809-00 0010
	Brushed Platinum	33 505 809-06 0010
	Brushed Durabrass (23kt Gold)	33 505 809-28 0010
	Brushed Dark Brass	33 505 809-39 0010
	Brushed Bronze	33 505 809-42 0010
	Brushed Champagne (22kt Gold)	33 505 809-46 0010
	Champagne (22kt Gold)	33 505 809-47 0010
	Brushed Dark Platinum	33 505 809-99 0010

33 505 809 Product version from 4/1/2025

mm [inches]



Codes & Standards

ADA	ASME A112.18.1	California Energy Commission (CEC)	cUPC
EPA WaterSense	NSF372	NSF61	WaterSense

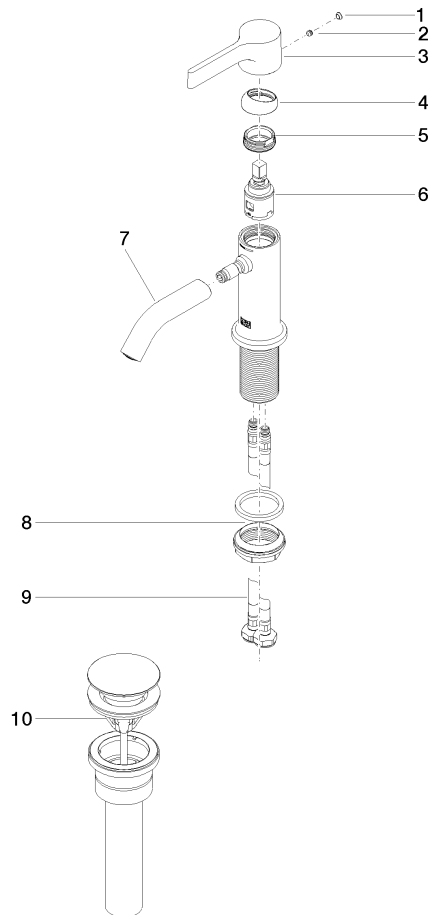


Certificates and sustainability

IAPMO_6397 IAPMO_N-4976 IAPMO_8834 IAPMO_4976 (

33 505 809 Product version from 4/1/2025

Parts for other
finishes can be found
here: [Chrome](#)



Spare parts list

No.	Item Number	Name	Quantity used	Delivery time
1	90 31 20 087 00-08	plug	1.00	40
3	09 20 80 020-08	handle	1.00	40
5	09 24 04 266 90	nut	1.00	2
7	90 11 06 215 01-08	spout	1.00	40
9	04 30 04 102 00 90	High pressure hose 3/8" -	2.00	2
8	04 23 10 044 07 90	fixing set	1.00	2
6	90 15 05 042 00 90	cartridge	1.00	2
10	10 125 970-08 0010	Basin Waste 1 1/4" - Platinum	1.00	40
4	09 28 30 021-08	cover	1.00	40
2	90 31 11 063 00 90	pin	1.00	2