

## CYO Single-lever basin mixer with pop-up waste - Brushed Platinum

CYO






33 505 811



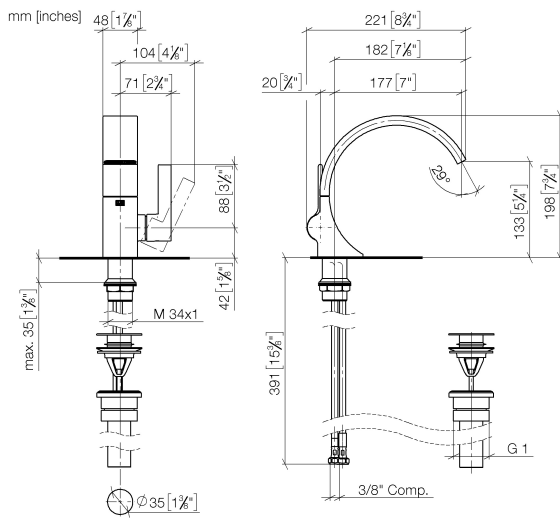
- 177mm projection
- 1 1/4" pop-up waste
- fixed spout
- rectangular, air-enriched flow
- height of mixer 198 mm
- height up to aerator 133 mm
- hole diameter 35 mm
- max. flow 4.5 l/min
- 2 x pressure hose with 3/8" cap nut
- lead-free
- This product can help a building meet the requirements of Green Building Rating Systems, e.g. LEED®, BREEAM®, DGNB

Only suitable for basins with an overflow.

Distance from centre of tap hole to wall min. 55 mm  
or to front edge of basin min. 40 mm.

	Brushed Platinum	33 505 811-06 0010
	Chrome	33 505 811-00 0010
	Dark Chrome	33 505 811-19 0010
	Brushed Durabrass (23kt Gold)	33 505 811-28 0010
	Brushed Dark Platinum	33 505 811-99 0010

33 505 811



### Codes & Standards

ADA	ASME A112.18.1	California Energy Commission (CEC)	cUPC
EPA WaterSense	NSF372	NSF61	WaterSense

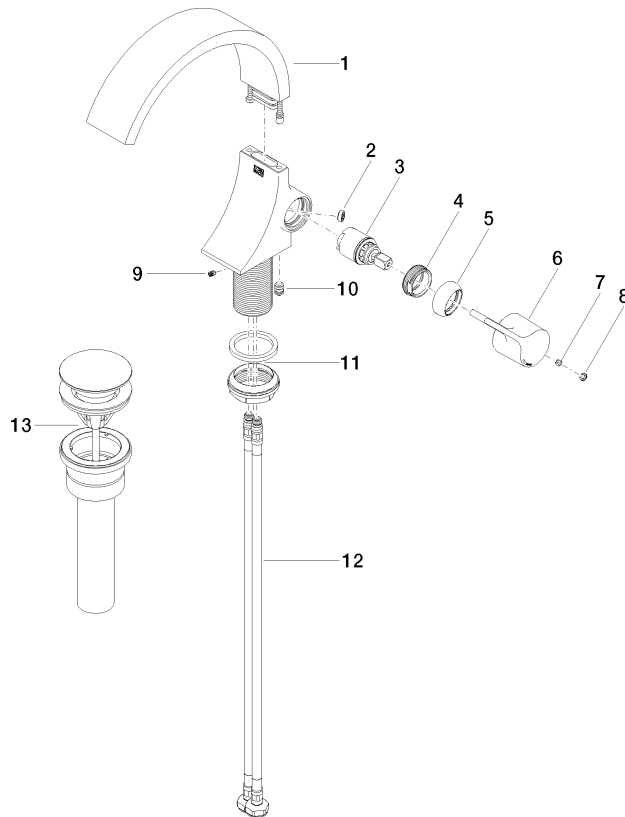


### Certificates and sustainability

IAPMO\_N-4976    IAPMO\_6397    IAPMO\_8834    IAPMO\_4976 (

33 505 811

Parts for other  
finishes can be found  
here: [Chrome](#)



## Spare parts list

No.	Item Number	Name	Quantity used	Delivery time
3	90 15 05 044 00 90	cartridge	1.00	2
11	04 23 10 044 07 90	fixing set	1.00	2
9	09 31 11 008 90	pin	1.00	2
1	90 11 70 013 01-06	spout	1.00	10
4	09 24 04 266 90	nut	1.00	2
12	04 30 04 102 00 90	High pressure hose 3/8" -	2.00	2
10	90 31 20 129 00 90	plug	1.00	2
8	90 31 20 087 00-06	plug	1.00	10
13	10 125 970-06 0010	Basin Waste 1 1/4" - Brushed Platinum	1.00	2
2	09 23 01 172 90	flow reducer	1.00	2
5	09 28 30 021-06	cover	1.00	10
6	09 20 80 024-06	handle	1.00	10
7	90 31 11 030 00 90	pin	1.00	2