



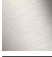



## CL.1 Single-lever basin mixer without pop-up waste - Brushed Champagne (22kt Gold)

CL.1

33 521 705 Product version from 5/10/2021



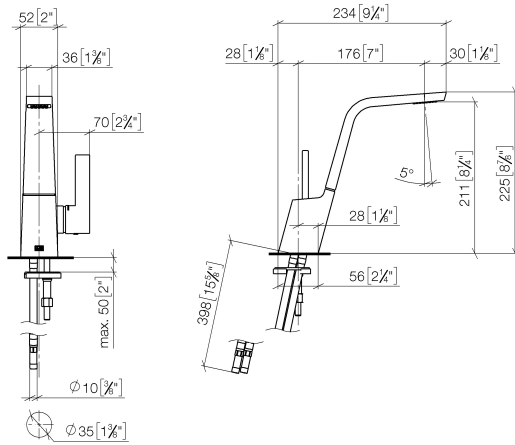
- 173mm projection
- fixed spout
- rectangular spray pattern with 40 individual jets
- height of mixer 226 mm
- base 56 x 52mm
- height up to aerator 212 mm
- hole diameter 35 mm
- 2 x pressure hose with 3/8" cap nut
- max. flow 4 l/min
- lead-free
- This product can help a building meet the requirements of Green Building Rating Systems, e.g. LEED®, BREEAM®, DGNB

	Brushed Champagne (22kt Gold)	33 521 705-46 0010
	Chrome	33 521 705-00 0010
	Brushed Platinum	33 521 705-06 0010
	Dark Chrome	33 521 705-19 0010
	Champagne (22kt Gold)	33 521 705-47 0010
	Brushed Dark Platinum	33 521 705-99 0010

## CL.1 Single-lever basin mixer without pop-up waste - Brushed Champagne (22kt Gold)

CL.1

33 521 705 Product version from 5/10/2021  
mm [inches]



### Codes & Standards

ADA	ASME A112.18.1	California Energy Commission (CEC)	cUPC
EPA WaterSense	NSF372	NSF61	WaterSense



### Certificates and sustainability

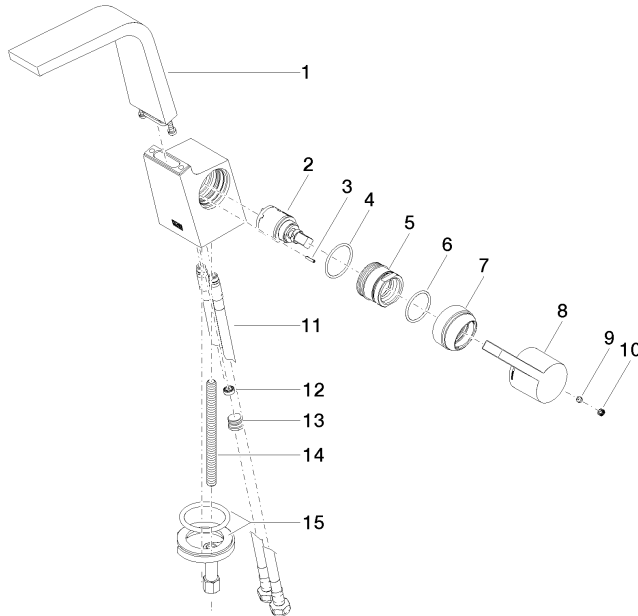
IAPMO\_N-4976    IAPMO\_6397    IAPMO\_8834    IAPMO\_4976 (

CL.1 Single-lever basin mixer without pop-up waste - Brushed Champagne (22kt Gold)

CL.1

33 521 705 Product version from 5/10/2021

Parts for other finishes can be found here: [Chrome](#)



## Spare parts list

No.	Item Number	Name	Quantity used	Delivery time
9	90 31 11 030 00 90	pin	1.00	2
13	04 31 20 039 11 90	plug	1.00	2
3	09 31 11 152 90	pin	1.00	2
1	90 11 70 001 00-46	spout	1.00	30
4	09 14 10 137 90	seal	1.00	2
6	90 14 10 063 00 90	seal	1.00	2
14	09 31 11 012 90	pin	1.00	2
8	09 20 67 010-46	handle	1.00	60
10	90 31 20 109 00 90	plug	1.00	2
15	04 30 11 038 75 90	fixing set	1.00	2
7	09 28 30 029-46	cover	1.00	60
5	09 24 04 294 90	sleeve	1.00	2
11	04 30 04 102 00 90	High pressure hose 3/8" -	2.00	2
2	90 15 05 042 00 90	cartridge	1.00	2
12	09 23 01 034 90	flow reducer	1.00	2