

CYO Single-lever basin mixer without pop-up waste - Brushed Platinum

CYO






33 521 811



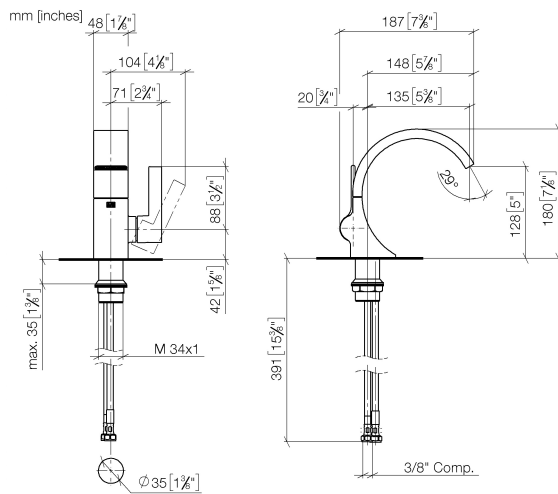
- 143mm projection
- fixed spout
- rectangular, air-enriched flow
- height of mixer 180 mm
- height up to aerator 128 mm
- hole diameter 35 mm
- max. flow 4.5 l/min
- 2 x pressure hose with 3/8" cap nut
- lead-free
- This product can help a building meet the requirements of Green Building Rating Systems, e.g. LEED®, BREEAM®, DGNB

Only suitable for basins with an overflow.

Distance from centre of tap hole to wall min. 55 mm
or to front edge of basin min. 40 mm.

	Brushed Platinum	33 521 811-06 0010
	Chrome	33 521 811-00 0010
	Dark Chrome	33 521 811-19 0010
	Brushed Durabrass (23kt Gold)	33 521 811-28 0010
	Brushed Dark Platinum	33 521 811-99 0010

33 521 811



Codes & Standards

ADA	ASME A112.18.1	California Energy Commission (CEC)	cUPC
EPA WaterSense	NSF372	NSF61	WaterSense

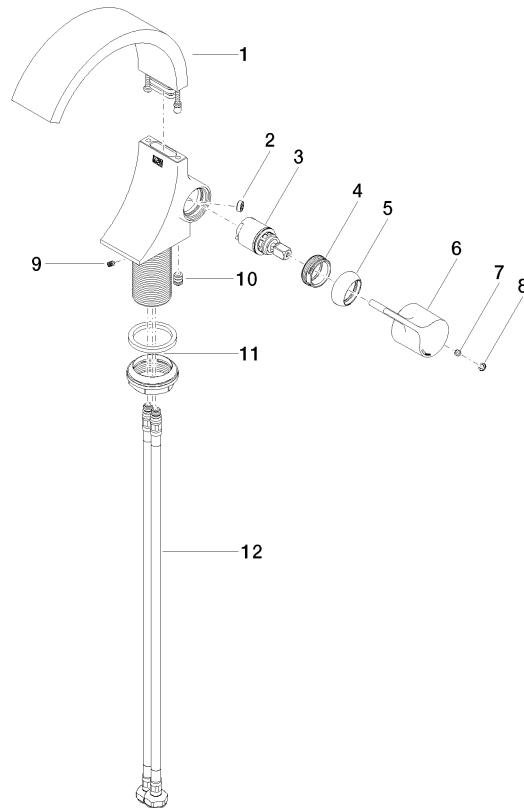


Certificates and sustainability

IAPMO_N-4976 IAPMO_6397 IAPMO_8834 IAPMO_4976 (

33 521 811

Parts for other
finishes can be found
here: [Chrome](#)



Spare parts list

No.	Item Number	Name	Quantity used	Delivery time
5	09 28 30 021-06	cover	1.00	10
2	09 23 01 172 90	flow reducer	1.00	2
1	90 11 70 012 01-06	spout	1.00	10
4	09 24 04 266 90	nut	1.00	2
12	04 30 04 102 00 90	High pressure hose 3/8" -	2.00	2
11	04 23 10 044 07 90	fixing set	1.00	2
8	90 31 20 087 00-06	plug	1.00	10
9	09 31 11 008 90	pin	1.00	2
6	09 20 80 024-06	handle	1.00	10
10	90 31 20 129 00 90	plug	1.00	2
3	90 15 05 044 00 90	cartridge	1.00	2
7	90 31 11 030 00 90	pin	1.00	2