

## CYO Single-lever basin mixer without pop-up waste - Brushed Durabrass (23kt Gold)

CYO



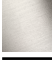
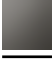

33 521 811



- 143mm projection
- fixed spout
- rectangular, air-enriched flow
- height of mixer 180 mm
- height up to aerator 128 mm
- hole diameter 35 mm
- max. flow 4.5 l/min
- 2 x pressure hose with 3/8" cap nut
- lead-free
- This product can help a building meet the requirements of Green Building Rating Systems, e.g. LEED®, BREEAM®, DGNB

Only suitable for basins with an overflow.

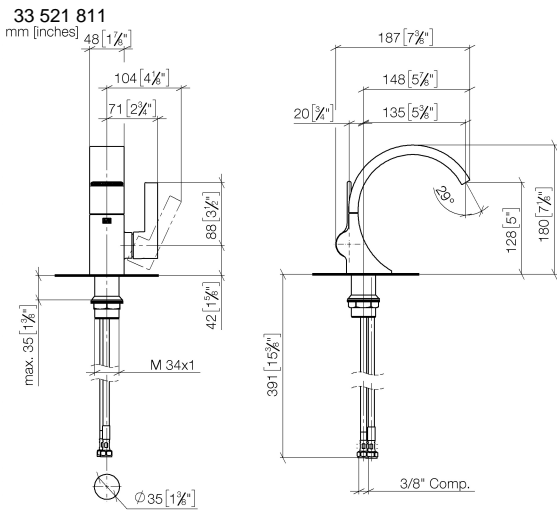
Distance from centre of tap hole to wall min. 55 mm  
or to front edge of basin min. 40 mm.

	Brushed Durabrass (23kt Gold)	33 521 811-28 0010
	Chrome	33 521 811-00 0010
	Brushed Platinum	33 521 811-06 0010
	Dark Chrome	33 521 811-19 0010
	Brushed Dark Platinum	33 521 811-99 0010



CYO Single-lever basin mixer without pop-up waste - Brushed Durabronz (23kt Gold)

CYO



Codes & Standards

ADA	California Energy Commission (CEC)	NSF372	NSF61
-----	------------------------------------	--------	-------

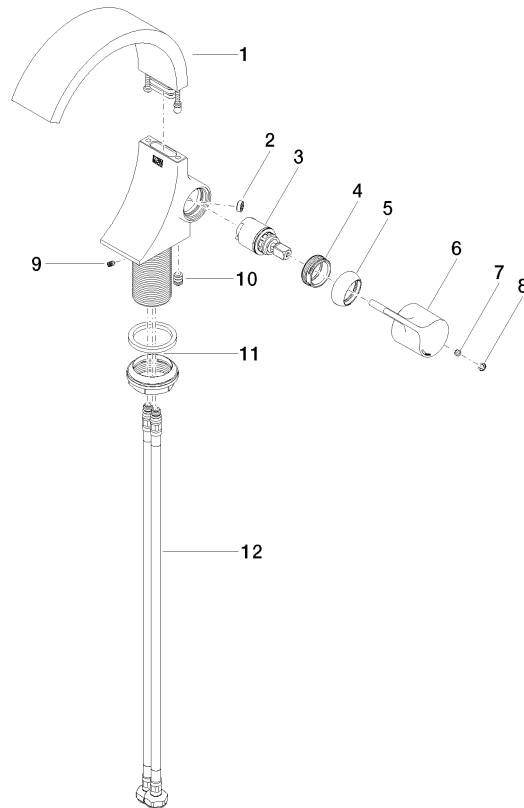
Certificates and sustainability

IAPMO\_N-4976      IAPMO\_6397

## CYO Single-lever basin mixer without pop-up waste - Brushed Durabrass (23kt Gold)

CYO

33 521 811  
Parts for other  
finishes can be found  
here: [Chrome](#)



### Spare parts list

No.	Item Number	Name	Quantity used	Delivery time
3	90 15 05 044 00 90	cartridge	1.00	2
1	90 11 70 012 01-28	spout	1.00	20
8	90 31 20 087 00-28	plug	1.00	20
6	09 20 80 024-28	handle	1.00	20
10	90 31 20 129 00 90	plug	1.00	2
5	09 28 30 021-28	cover	1.00	20
2	09 23 01 172 90	flow reducer	1.00	2
4	09 24 04 266 90	nut	1.00	2
12	04 30 04 102 00 90	High pressure hose 3/8" -	2.00	2
9	09 31 11 008 90	pin	1.00	2
11	04 23 10 044 07 90	fixing set	1.00	2
7	90 31 11 030 00 90	pin	1.00	2