

## META Single-lever basin mixer without pop-up waste - Brushed Bronze

33 522 660 Product version from 1/23/2020



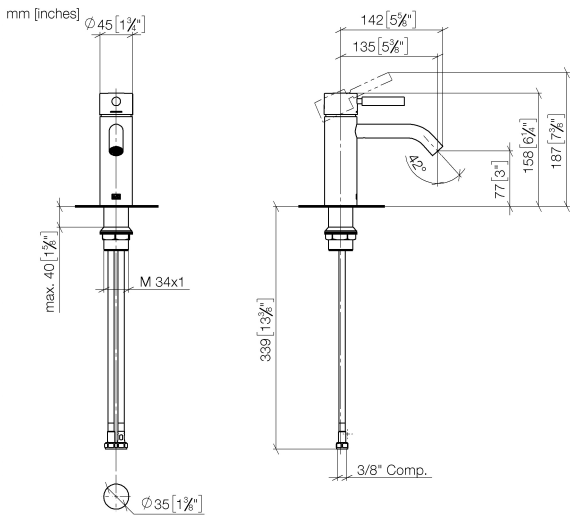
- 135mm projection
- fixed spout
- circular, air-enriched flow
- height of mixer 158 mm
- height up to aerator 77 mm
- hole diameter 35 mm
- 2 x pressure hose with 3/8" cap nut
- max. flow 4.5 l/min
- lead-free
- This product can help a building meet the requirements of Green Building Rating Systems, e.g. LEED®, BREEAM®, DGNB

|  |                               |                    |
|--|-------------------------------|--------------------|
|   | Brushed Bronze                | 33 522 660-42 0010 |
|   | Chrome                        | 33 522 660-00 0010 |
|   | Brushed Platinum              | 33 522 660-06 0010 |
|   | Dark Chrome                   | 33 522 660-19 0010 |
|   | Light Gold                    | 33 522 660-26 0010 |
|   | Brushed Light Gold            | 33 522 660-27 0010 |
|   | Matte Black                   | 33 522 660-33 0010 |
|   | Brushed Champagne (22kt Gold) | 33 522 660-46 0010 |
|   | Champagne (22kt Gold)         | 33 522 660-47 0010 |
|   | Brushed Chrome                | 33 522 660-93 0010 |
|  | Brushed Dark Platinum         | 33 522 660-99 0010 |



META Single-lever basin mixer without pop-up waste - Brushed Bronze

33 522 660    Product version from 1/23/2020



Codes & Standards

|       |                |                                 |  |
|-------|----------------|---------------------------------|--|
| ADA   | ASME A112.18.1 | ASME<br>A112.18.1/CSA<br>B125.1 | California Energy<br>Commission<br>(CEC) |
| cUPC  | NSF/ANSI 372   | NSF/ANSI/CAN<br>61              | NSF372                                   |
| NSF61 |                |                                 |  |

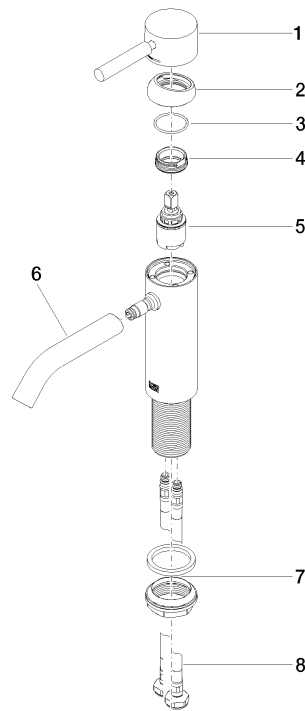
Certificates

|              |            |              |
|--------------|------------|--------------|
| IAPMO_N-4976 | IAPMO_6397 | IAPMO_4976 ( |
|--------------|------------|--------------|

## META Single-lever basin mixer without pop-up waste - Brushed Bronze

33 522 660 Product version from 1/23/2020

Parts for other  
finishes can be found  
here: [Chrome](#)



### Spare parts list

| No. | Item Number        | Name                      | Quantity used | Delivery time |
|-----|--------------------|---------------------------|---------------|---------------|
| 1   | 90 20 66 002 00-42 | handle                    | 1             | 30            |
| 2   | 09 28 30 041-42    | cover                     | 1             | 60            |
| 3   | 09 14 10 091 90    | seal                      | 1             | 2             |
| 4   | 09 24 04 266 90    | nut                       | 1             | 2             |
| 5   | 90 15 05 044 00 90 | cartridge                 | 1             | 2             |
| 6   | 90 11 06 207 01-42 | spout                     | 1             | 30            |
| 7   | 04 23 10 044 07 90 | fixing set                | 1             | 2             |
| 8   | 04 30 04 102 00 90 | High pressure hose 3/8" - | 2             | 2             |