


LISSÉ Single-lever basin mixer with raised base without pop-up waste - Chrome

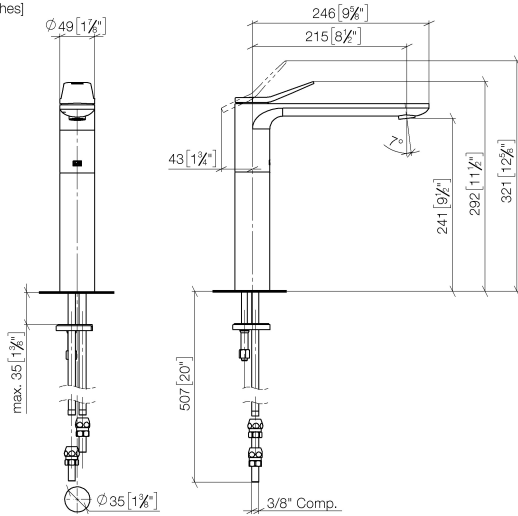
LISSÉ

| | | | |
|---|---|---|--|
| 33 537 845 | Product version from 3/9/2016 to 10/31/2018 | | |
|  | <ul style="list-style-type: none"> • 215mm projection • fixed spout • circular, air-enriched flow • height of mixer 292 mm • height up to aerator 241 mm • hole diameter 35 mm • 2 x pressure hose with 3/8" cap nut • max. flow 4.5 l/min • lead-free • This product can help a building meet the requirements of Green Building Rating Systems, e.g. LEED®, BREEAM®, DGNB | <div> <div></div> <div>Chrome</div> <div>33 537 845-00 0010</div> </div> | |
| | | | |
| | | | |
| | | | |
| | | | |
| | | | |
| | | | |
| | for use on countertop bowls | | |
| | | <div> <div></div> <div>Brushed Platinum</div> <div>33 537 845-06 0010</div> </div> | |
| | | <div> <div></div> <div>Dark Chrome</div> <div>33 537 845-19 0010</div> </div> | |
| | | <div> <div></div> <div>Brushed Light Gold</div> <div>33 537 845-27 0010</div> </div> | |
| | | <div> <div></div> <div>Matte Black</div> <div>33 537 845-33 0010</div> </div> | |
| | | <div> <div></div> <div>Brushed Chrome</div> <div>33 537 845-93 0010</div> </div> | |
| | | <div> <div></div> <div>Brushed Dark Platinum</div> <div>33 537 845-99 0010</div> </div> | |

LISSÉ Single-lever basin mixer with raised base without pop-up waste - Chrome

LISSÉ

33 537 845 Product version from 3/9/2016 to 10/31/2018
mm [inches]



Codes & Standards

| | | | |
|----------------|----------------|------------------------------------|------------|
| ADA | ASME A112.18.1 | California Energy Commission (CEC) | cUPC |
| EPA WaterSense | NSF372 | NSF61 | WaterSense |



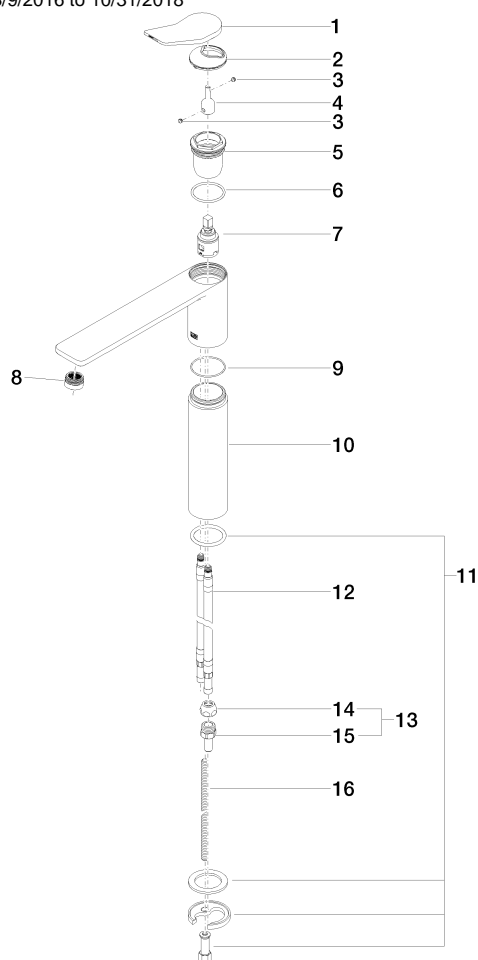
Certificates and sustainability

| | | | |
|--------------|------------|--------------|------------|
| IAPMO_N-4976 | IAPMO_6397 | IAPMO_4976 (| IAPMO_8834 |
|--------------|------------|--------------|------------|

LISSÉ Single-lever basin mixer with raised base without pop-up waste - Chrome

LISSÉ

33 537 845 Product version from 3/9/2016 to 10/31/2018



Spare parts list

| No. | Item Number | Name | Quantity used | Delivery time |
|-----|--------------------|--------------------|---------------|---------------|
| 8 | 90 23 01 161 03-00 | aerator | 1.00 | 10 |
| 13 | 04 24 04 222 00-00 | adaptor | 1.00 | 10 |
| 5 | 09 23 10 123 90 | nut | 1.00 | 2 |
| 14 | 04 23 30 031 01-07 | threaded connector | 2.00 | 60 |
| 4 | 09 29 06 117-07 | extension | 1.00 | 30 |
| 15 | 09 24 04 222 10-00 | adaptor | 2.00 | 10 |
| 9 | 09 14 10 108 90 | seal | 1.00 | 2 |
| 6 | 09 14 10 038 90 | seal | 1.00 | 2 |
| 1 | 90 20 84 020 00-00 | handle | 1.00 | 10 |
| 7 | 90 15 05 042 00 90 | cartridge | 1.00 | 2 |
| 11 | 04 30 11 038 75 90 | fixing set | 1.00 | 2 |
| 2 | 09 28 30 034 90 | cover | 1.00 | 2 |
| 10 | 09 28 22 306-00 | sleeve | 1.00 | 10 |
| 16 | 09 31 11 095 90 | pin | 1.00 | 2 |
| 12 | 04 30 04 098 00 90 | hose | 2.00 | 60 |
| 3 | 90 31 11 063 00 90 | pin | 2.00 | 2 |