

LISSÉ Single-lever basin mixer with raised base without pop-up waste - Brushed Platinum






LISSÉ

33 537 845 Product version from 3/9/2016 to 10/31/2018



- 215mm projection
- fixed spout
- circular, air-enriched flow
- height of mixer 292 mm
- height up to aerator 241 mm
- hole diameter 35 mm
- 2 x pressure hose with 3/8" cap nut
- max. flow 4.5 l/min
- lead-free
- This product can help a building meet the requirements of Green Building Rating Systems, e.g. LEED®, BREEAM®, DGNB

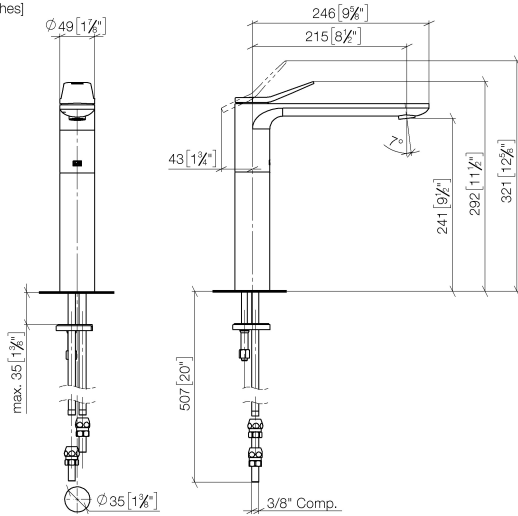
for use on countertop bowls

	Brushed Platinum	33 537 845-06 0010
	Chrome	33 537 845-00 0010
	Dark Chrome	33 537 845-19 0010
	Brushed Light Gold	33 537 845-27 0010
	Matte Black	33 537 845-33 0010
	Brushed Chrome	33 537 845-93 0010
	Brushed Dark Platinum	33 537 845-99 0010

LISSÉ Single-lever basin mixer with raised base without pop-up waste - Brushed Platinum

LISSÉ

33 537 845 Product version from 3/9/2016 to 10/31/2018
mm [inches]



Codes & Standards

ADA	ASME A112.18.1	California Energy Commission (CEC)	cUPC
EPA WaterSense	NSF372	NSF61	WaterSense



Certificates and sustainability

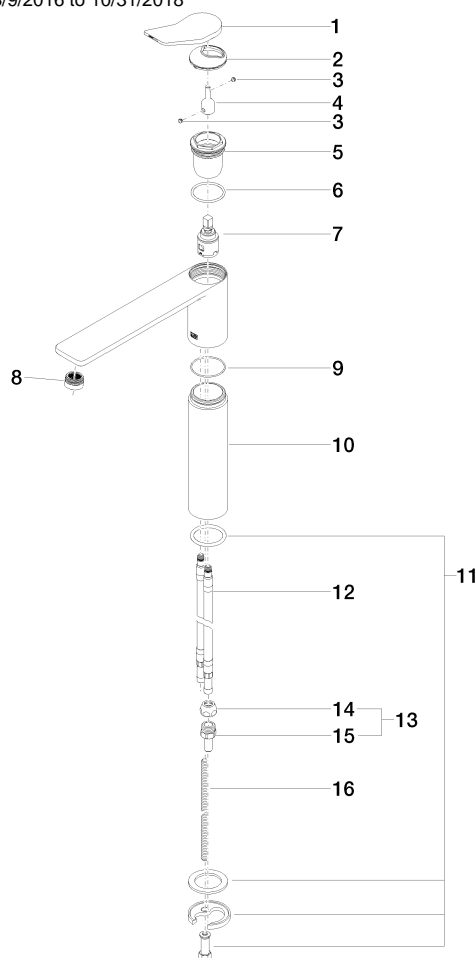
IAPMO_N-4976	IAPMO_6397	IAPMO_4976 (IAPMO_8834
--------------	------------	--------------	------------

LISSÉ Single-lever basin mixer with raised base without pop-up waste - Brushed Platinum

LISSÉ

33 537 845 Product version from 3/9/2016 to 10/31/2018

Parts for other
finishes can be found
here: Chrome



Spare parts list

No.	Item Number	Name	Quantity used	Delivery time
1	90 20 84 020 00-06	handle	1.00	10
14	04 23 30 031 01-07	threaded connector	2.00	60
10	09 28 22 306-06	sleeve	1.00	10
5	09 23 10 123 90	nut	1.00	2
7	90 15 05 042 00 90	cartridge	1.00	2
13	04 24 04 222 00-06	adaptor	1.00	-
Spare part can no longer be ordered, please order the replacement item				
9	09 14 10 108 90	seal	1.00	2
6	09 14 10 038 90	seal	1.00	2
4	09 29 06 117-07	extension	1.00	30
15	09 24 04 222 10-06	adaptor	2.00	-
Spare part can no longer be ordered, please order the replacement item				
11	04 30 11 038 75 90	fixing set	1.00	2
8	90 23 01 161 03-06	aerator	1.00	10
2	09 28 30 034 90	cover	1.00	2
12	04 30 04 098 00 90	hose	2.00	60
16	09 31 11 095 90	pin	1.00	2
3	90 31 11 063 00 90	pin	2.00	2