



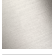




IMO Single-lever bidet mixer with pop-up waste - Matte Black

IMO

33 600 671    Product version from 4/1/2024



- 125mm projection
- 1 1/4" pop-up waste
- fixed spout
- ball-joint pivotable through °
- rectangular, air-enriched flow
- height of mixer 138 mm
- height up to aerator 89 mm
- 2 x pressure hose with 3/8" cap nut
- hole diameter 35 mm
- max. flow 4.6 l/min

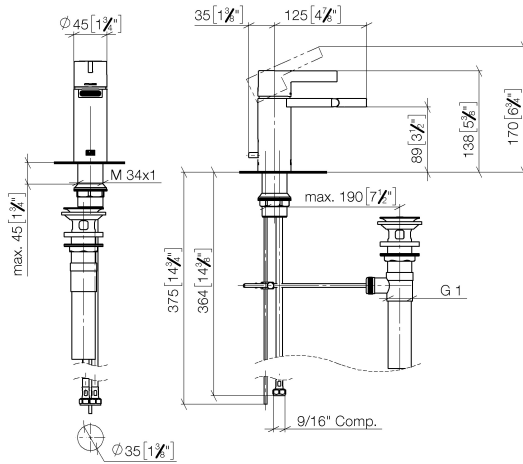
|   |                       |                    |
|---|-----------------------|--------------------|
|  | Matte Black           | 33 600 671-33 0010 |
|  | Chrome                | 33 600 671-00 0010 |
|  | Brushed Platinum      | 33 600 671-06 0010 |
|  | Dark Chrome           | 33 600 671-19 0010 |
|  | Brushed Light Gold    | 33 600 671-27 0010 |
|  | Brushed Chrome        | 33 600 671-93 0010 |
|  | Brushed Dark Platinum | 33 600 671-99 0010 |

## IMO Single-lever bidet mixer with pop-up waste - Matte Black

IMO

33 600 671 Product version from 4/1/2024

mm [inches]



### Codes & Standards

ADA

ASME A112.18.1

cUPC

### Certificates and sustainability

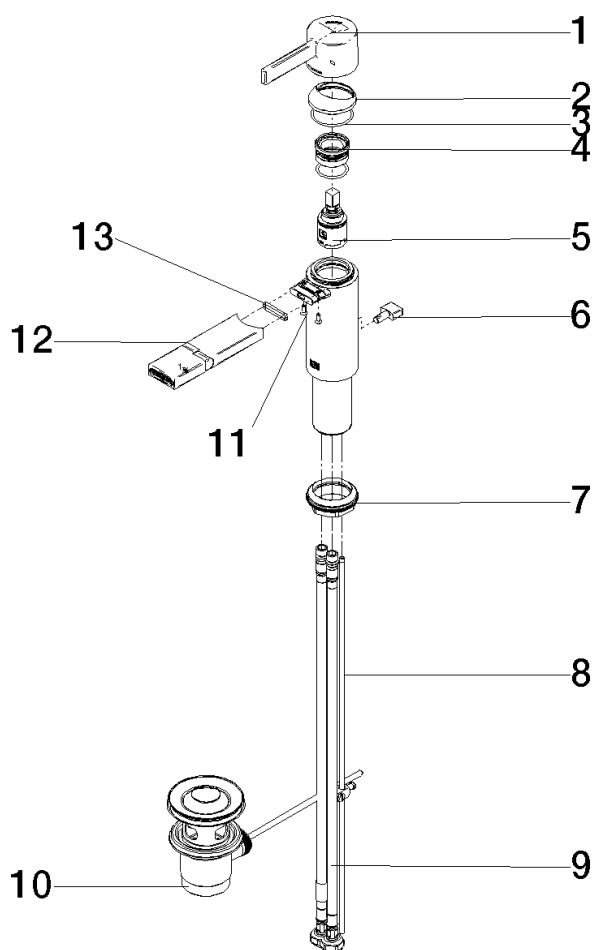
IAPMO\_4976 (

# IMO Single-lever bidet mixer with pop-up waste - Matte Black

IMO

33 600 671 Product version from 4/1/2024

Parts for other  
finishes can be found  
here: [Chrome](#)



## Spare parts list

| No.  | Item Number           | Name         | Quantity used | Delivery time |
|--|-----------------------|--------------|---------------|---------------|
|  | 13 09 14 10 017 90    | seal         | 1.00          | 2             |
|  | 3 09 14 10 102 90     | seal         | 1.00          | 2             |
|  | 11 09 30 30 166 90    | screw        | 2.00          | 2             |
|  | 7 04 23 10 044 07 90  | fixing set   | 1.00          | 2             |
|  | 10 90 11 01 023 00-33 | pop-up waste | 1.00          | 30            |
|  | 12 90 28 22 423 00-33 | spout        | 1.00          | 30            |
|  | 9 04 30 04 106 00 90  | hose         | 2.00          | 2             |
|  | 2 90 28 30 059 00-33  | cover        | 1.00          | -             |
| Spare part can no longer be ordered, please order the replacement item |                       |              |               |               |
|  | 5 90 15 05 042 00 90  | cartridge    | 1.00          | 2             |
|  | 8 09 31 09 080-33     | pull-rod     | 1.00          | 30            |
|  | 6 09 20 67 002-33     | handle       | 1.00          | 60            |
|  | 1 90 20 67 019 00-33  | handle       | 1.00          | 30            |
|  | 4 90 23 10 146 00 90  | nut          | 1.00          | 2             |