

## TARA Single-lever mixer - Brushed Platinum

TARA

33 800 888 Product version from 5/31/2010 to 10/27/2020



- 201mm projection
- pivotable spout 360°
- air-enriched flow
- height of mixer 325 mm
- height up to aerator 180 mm
- hole diameter 35 mm
- 2 x pressure hose with 3/8" cap nut
- max. flow 5.7 l/min at 3 bar flow pressure
- lead-free
- This product can help a building meet the requirements of Green Building Rating Systems, e.g. LEED®, BREEAM®, DGNB

Not possible in combination with rinsing spray.

	Brushed Platinum	33 800 888-06 0010
	Chrome	33 800 888-00 0010
	Platinum	33 800 888-08 0010
	Durabronze (23kt Gold)	33 800 888-09 0010
	Dark Chrome	33 800 888-19 0010
	Brushed Durabronze (23kt Gold)	33 800 888-28 0010
	Matte Black	33 800 888-33 0010
	Brushed Bronze	33 800 888-42 0010
	Brushed Champagne (22kt Gold)	33 800 888-46 0010
	Champagne (22kt Gold)	33 800 888-47 0010
	Brushed Chrome	33 800 888-93 0010
	Brushed Dark Platinum	33 800 888-99 0010

### Recommended miscellaneous

**AIR SWITCH Control button - Brushed Platinum** 10 713 970-06



### Recommended miscellaneous

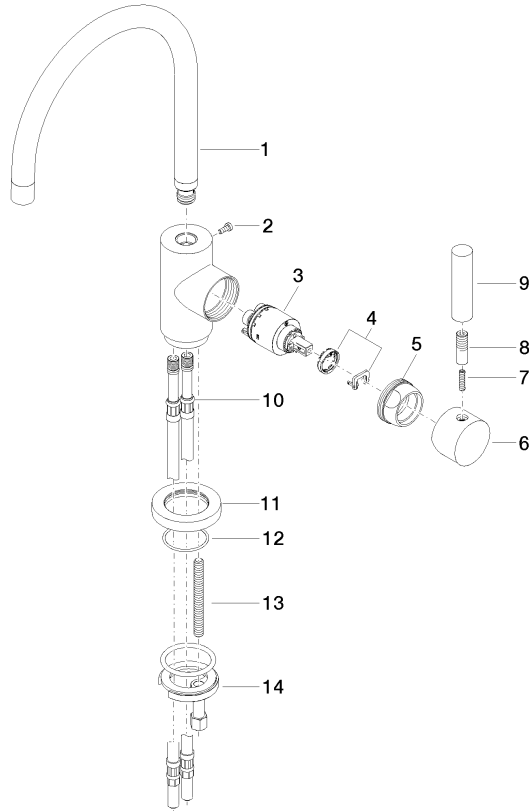
**Dispenser with rosette - Brushed Platinum** 82 444 970-06





33 800 888 Product version from 5/31/2010 to 10/27/2020

Parts for other  
finishes can be found  
here: [Chrome](#)



## Spare parts list

No.	Item Number	Name	Quantity used	Delivery time
1	90 28 22 048 03-06	spout	1.00	10
14	04 30 11 038 00 90	fixing set	1.00	2
10	04 30 04 044 00 90	hose	2.00	60
9	11 170 880-06	handle	1.00	10
13	09 31 11 011 90	pin	1.00	2
7	09 31 11 010 90	pin	1.00	2
12	09 14 10 034 90	seal	1.00	2
11	09 28 10 055-06	rosette	1.00	10
6	90 20 88 040 00-06	handle	1.00	10
2	09 30 30 054 90	screw	1.00	2
5	09 24 04 107-06	nut	1.00	10
3	90 15 05 065 00 90	cartridge	1.00	2
8	90 24 04 048 00-06	nipple	1.00	10
4	90 28 10 148 00 90	accessories	1.00	2