

## MEM BAR TAP Single-lever mixer - Durabronz (23kt Gold)

MEM

33 805 682 Product version from 3/1/2023



- 166mm projection
- pivotable spout 360°
- Optional swivel limiter available with swivel limiter set 12 820 970 90
- air-enriched flow
- height of mixer 322 mm
- height up to laminar flow regulator 216 mm
- hole diameter 35 mm
- 2 x pressure hose with 3/8" cap nut
- max. flow 5.7 l/min at 3 bar flow pressure
- lead-free
- This product can help a building meet the requirements of Green Building Rating Systems, e.g. LEED®, BREEAM®, DGNB

Not possible in combination with rinsing spray.

	Durabronz (23kt Gold)	33 805 682-09 0010
	Chrome	33 805 682-00 0010
	Brushed Platinum	33 805 682-06 0010
	Platinum	33 805 682-08 0010
	Dark Chrome	33 805 682-19 0010
	Brushed Durabronz (23kt Gold)	33 805 682-28 0010
	Matte Black	33 805 682-33 0010
	Brushed Bronze	33 805 682-42 0010
	Brushed Champagne (22kt Gold)	33 805 682-46 0010
	Champagne (22kt Gold)	33 805 682-47 0010
	Brushed Chrome	33 805 682-93 0010
	Brushed Dark Platinum	33 805 682-99 0010

### Recommended miscellaneous

**Swivel limitation set -** 12 820 970 90



### Recommended miscellaneous

**Dispenser without rosette - Durabronz (23kt Gold)** 82 424 970-09



### Recommended miscellaneous

**AIR SWITCH Control button - Durabronz (23kt Gold)** 10 713 970-09

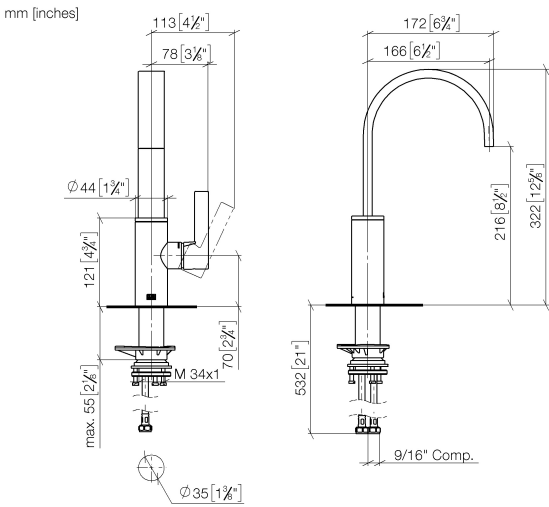


MEM BAR TAP Single-lever mixer - Durabronz (23kt Gold)

MEM

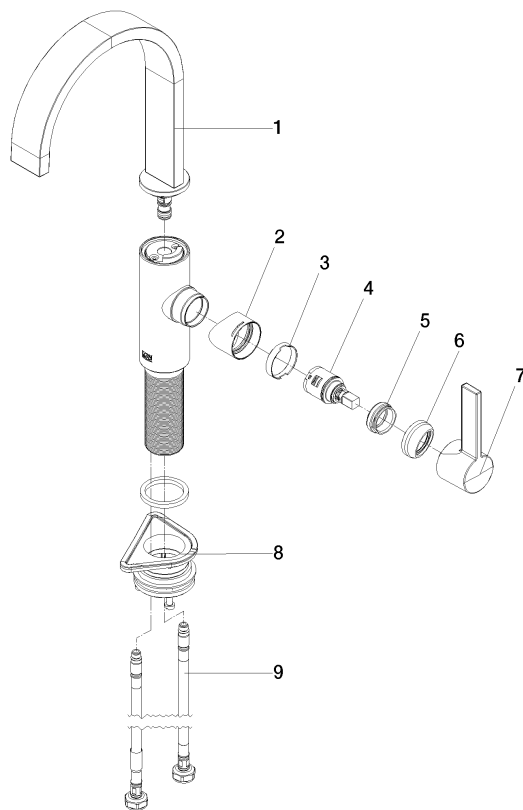
33 805 682

Product version from 3/1/2023



Codes & Standards			
ADA	ASME A112.18.1	California Energy Commission (CEC)	cUPC
NSF372	NSF61		

Certificates and sustainability		
IAPMO_6397	IAPMO_N-4976	IAPMO_4976 (



## Spare parts list

No.	Item Number	Name	Quantity used	Delivery time
2	09 19 86 012-09	cover	1.00	60
5	09 24 04 266 90	nut	1.00	2
1	90 28 22 282 01-09	spout	1.00	40
6	90 28 30 052 00-09	cover	1.00	40
9	04 30 04 103 00 90	hose	2.00	2
4	90 15 05 042 00 90	cartridge	1.00	2
7	90 20 86 004 00-09	handle	1.00	40
3	90 23 10 128 00 90	nut	1.00	2
8	04 23 10 044 08 90	fixing set	1.00	2