

## MEM BAR TAP Single-lever mixer - Brushed Durabronze (23kt Gold)

MEM

33 805 682 Product version from 3/1/2023



- 166mm projection
- pivotable spout 360°
- Optional swivel limiter available with swivel limiter set 12 820 970 90
- air-enriched flow
- height of mixer 322 mm
- height up to laminar flow regulator 216 mm
- hole diameter 35 mm
- 2 x pressure hose with 3/8" cap nut
- max. flow 5.7 l/min at 3 bar flow pressure
- lead-free
- This product can help a building meet the requirements of Green Building Rating Systems, e.g. LEED®, BREEAM®, DGNB

Not possible in combination with rinsing spray.

|  |                                |                    |
|--|--------------------------------|--------------------|
|  | Brushed Durabronze (23kt Gold) | 33 805 682-28 0010 |
|  | Chrome                         | 33 805 682-00 0010 |
|  | Brushed Platinum               | 33 805 682-06 0010 |
|  | Platinum                       | 33 805 682-08 0010 |
|  | Durabronze (23kt Gold)         | 33 805 682-09 0010 |
|  | Dark Chrome                    | 33 805 682-19 0010 |
|  | Matte Black                    | 33 805 682-33 0010 |
|  | Brushed Bronze                 | 33 805 682-42 0010 |
|  | Brushed Champagne (22kt Gold)  | 33 805 682-46 0010 |
|  | Champagne (22kt Gold)          | 33 805 682-47 0010 |
|  | Brushed Chrome                 | 33 805 682-93 0010 |
|  | Brushed Dark Platinum          | 33 805 682-99 0010 |

### Recommended miscellaneous

|  |                                |               |
|--|--------------------------------|---------------|
|  | <b>Swivel limitation set -</b> | 12 820 970 90 |
|--|--------------------------------|---------------|

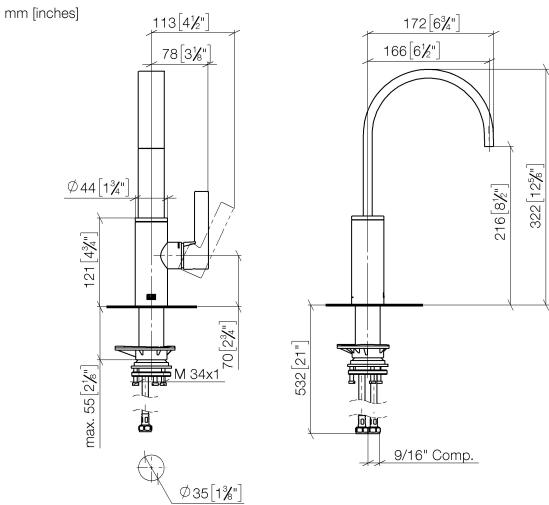
### Recommended miscellaneous

|  |   |               |
|--|---|---------------|
|  | <b>Dispenser without rosette -<br/>Brushed Durabronze (23kt Gold)</b> | 82 424 970-28 |
|--|---|---------------|

### Recommended miscellaneous

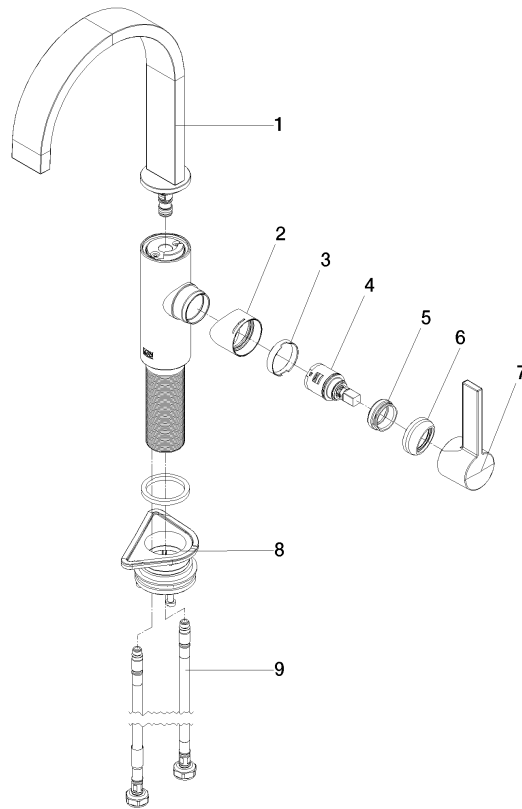
|  |   |               |
|--|---|---------------|
|  | <b>AIR SWITCH Control button -<br/>Brushed Durabronze (23kt Gold)</b> | 10 713 970-28 |
|--|---|---------------|

33 805 682
Product version from 3/1/2023



| Codes & Standards |                                    |        |       |
|-------------------|------------------------------------|--------|-------|
| ADA               | California Energy Commission (CEC) | NSF372 | NSF61 |

| Certificates and sustainability |              |
|---------------------------------|--------------|
| IAPMO_6397                      | IAPMO_N-4976 |



## Spare parts list

| No. | Item Number        | Name       | Quantity used | Delivery time |
|-----|--------------------|------------|---------------|---------------|
| 3   | 90 23 10 128 00 90 | nut        | 1.00          | 2             |
| 4   | 90 15 05 042 00 90 | cartridge  | 1.00          | 2             |
| 8   | 04 23 10 044 08 90 | fixing set | 1.00          | 2             |
| 5   | 09 24 04 266 90    | nut        | 1.00          | 2             |
| 2   | 09 19 86 012-28    | cover      | 1.00          | 60            |
| 7   | 90 20 86 004 00-28 | handle     | 1.00          | 20            |
| 9   | 04 30 04 103 00 90 | hose       | 2.00          | 2             |
| 1   | 90 28 22 282 01-28 | spout      | 1.00          | 20            |
| 6   | 90 28 30 052 00-28 | cover      | 1.00          | 20            |