

MEM BAR TAP Single-lever mixer - Matte Black

MEM

33 805 682



- 166mm projection
- pivotable spout 360°
- Optional swivel limiter available with swivel limiter set 12 820 970 90
- air-enriched flow
- height of mixer 322 mm
- height up to laminar flow regulator 216 mm
- hole diameter 35 mm
- 2 x pressure hose with 3/8" cap nut
- max. flow 5.7 l/min at 3 bar flow pressure
- lead-free
- This product can help a building meet the requirements of Green Building Rating Systems, e.g. LEED®, BREEAM®, DGNB

Not possible in combination with rinsing spray.

| | | |
|--|-------------------------------|--------------------|
| | Matte Black | 33 805 682-33 0010 |
| | Chrome | 33 805 682-00 0010 |
| | Brushed Platinum | 33 805 682-06 0010 |
| | Platinum | 33 805 682-08 0010 |
| | Durabrand (23kt Gold) | 33 805 682-09 0010 |
| | Dark Chrome | 33 805 682-19 0010 |
| | Brushed Durabrand (23kt Gold) | 33 805 682-28 0010 |
| | Brushed Champagne (22kt Gold) | 33 805 682-46 0010 |
| | Champagne (22kt Gold) | 33 805 682-47 0010 |
| | Brushed Chrome | 33 805 682-93 0010 |
| | Brushed Dark Platinum | 33 805 682-99 0010 |

Recommended miscellaneous

| | | |
|--|--------------------------------|---------------|
| | Swivel limitation set - | 12 820 970 90 |
|--|--------------------------------|---------------|

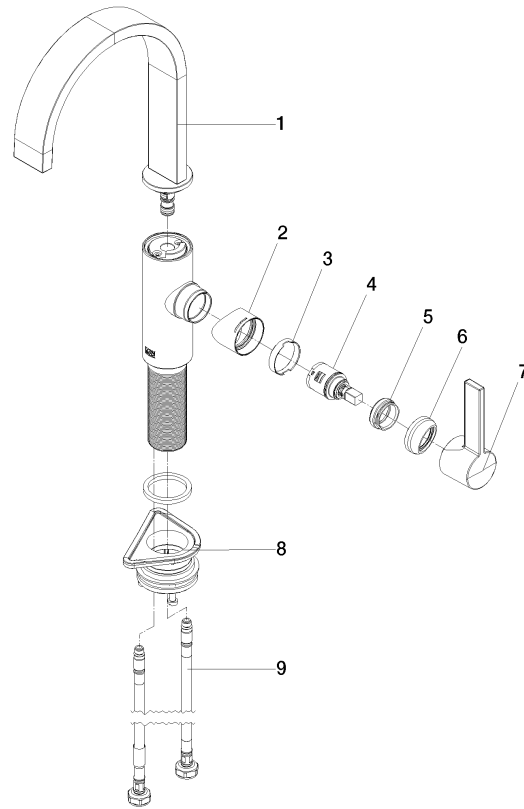
Recommended miscellaneous

| | | |
|--|--|---------------|
| | AIR SWITCH Control button - Matte Black | 10 713 970-33 |
|--|--|---------------|

Recommended miscellaneous

| | | |
|--|--|---------------|
| | Dispenser without rosette - Matte Black | 82 424 970-33 |
|--|--|---------------|

Product version from 3/1/2023





MEM BAR TAP Single-lever mixer - Matte Black

MEM

33 805 682

Spare parts list

Product version from 3/1/2023

| No. | Item Number | Name | Quantity used | Delivery time |
|-----|--------------------|-------|---------------|---------------|
| | 90 28 22 282 01-33 | spout | 10 | - |

Spare part can no longer be ordered, please order the replacement item