

TARA ULTRA BAR TAP Single-lever mixer - Durabronss (23kt Gold)

TARA ULTRA

33 805 875



- 166mm projection
- pivotable spout 360°
- laminar flow
- height of mixer 303 mm
- height up to laminar flow regulator 186 mm
- hole diameter 35 mm
- 2 x pressure hose with 3/8" cap nut
- max. flow 5.7 l/min at 3 bar flow pressure
- lead-free
- This product can help a building meet the requirements of Green Building Rating Systems, e.g. LEED®, BREEAM®, DGNB

Not possible in combination with rinsing spray.

| | | |
|--|--------------------------------|--------------------|
|  | Durabronss (23kt Gold) | 33 805 875-09 0010 |
|  | Chrome | 33 805 875-00 0010 |
|  | Brushed Platinum | 33 805 875-06 0010 |
|  | Platinum | 33 805 875-08 0010 |
|  | Dark Chrome | 33 805 875-19 0010 |
|  | Brushed Durabronss (23kt Gold) | 33 805 875-28 0010 |
|  | Matte Black | 33 805 875-33 0010 |
|  | Brushed Champagne (22kt Gold) | 33 805 875-46 0010 |
|  | Champagne (22kt Gold) | 33 805 875-47 0010 |
|  | Brushed Chrome | 33 805 875-93 0010 |
|  | Brushed Dark Platinum | 33 805 875-99 0010 |

Recommended miscellaneous



**Dispenser without rosette -
Durabronss (23kt Gold)**

82 424 970-09

Recommended miscellaneous



**AIR SWITCH Control button -
Durabronss (23kt Gold)**

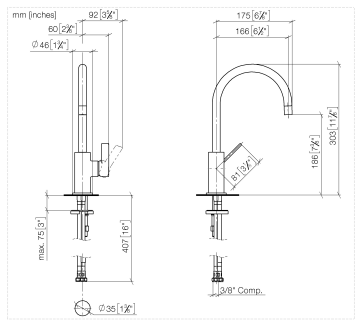
10 713 970-09



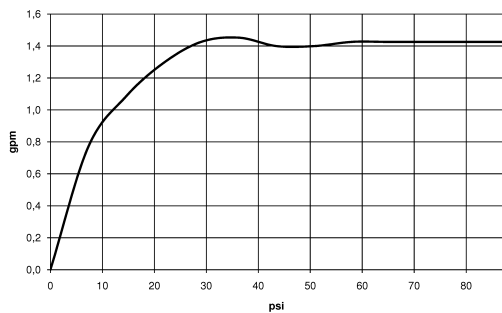
TARA ULTRA BAR TAP Single-lever mixer - Durabronz (23kt Gold)

TARA ULTRA

33 805 875



Flow rate chart



Codes & Standards

| | | | |
|--------------------|---------------------------------|--|--------------|
| ADA | ASME A112.18.1/CSA B125.1 | California Energy Commission (CEC) | NSF/ANSI 372 |
| NSF/ANSI/CAN 61 | NSF372 | NSF61 | |



TARA ULTRA BAR TAP Single-lever mixer - Durabross (23kt Gold)

TARA ULTRA

33 805 875

Certificates

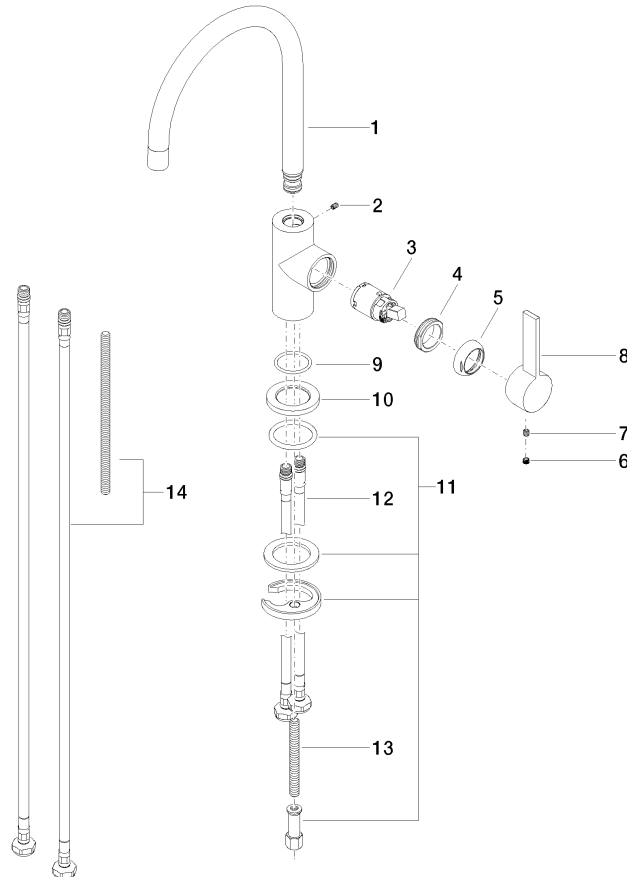
IAPMO_6397

IAPMO_N-4976

33 805 875

Product version from 5/3/2021

Parts for other
finishes can be found
here: [Chrome](#)





TARA ULTRA BAR TAP Single-lever mixer - Durabrass (23kt Gold)

TARA ULTRA

33 805 875

Spare parts list

Product version from 5/3/2021

| No. | Item Number | Name | Quantity used | Delivery time |
|-----|--------------------|-------|---------------|---------------|
| | 90 28 22 206 01-09 | spout | 15 | 40 |