

TARA BAR TAP Single-lever mixer - Dark Chrome

TARA

33 805 888



- 166mm projection
- pivotable spout 360°
- air-enriched flow
- height of mixer 302 mm
- height up to aerator 185 mm
- hole diameter 35 mm
- 2 x pressure hose with 3/8" cap nut
- max. flow 5.7 l/min at 3 bar flow pressure
- lead-free
- This product can help a building meet the requirements of Green Building Rating Systems, e.g. LEED®, BREEAM®, DGNB

Not possible in combination with rinsing spray.

	Dark Chrome	33 805 888-19 0010
	Chrome	33 805 888-00 0010
	Brushed Platinum	33 805 888-06 0010
	Platinum	33 805 888-08 0010
	Durabrass (23kt Gold)	33 805 888-09 0010
	Brushed Durabrass (23kt Gold)	33 805 888-28 0010
	Matte Black	33 805 888-33 0010
	Brushed Bronze	33 805 888-42 0010
	Brushed Champagne (22kt Gold)	33 805 888-46 0010
	Champagne (22kt Gold)	33 805 888-47 0010
	Brushed Chrome	33 805 888-93 0010
	Brushed Dark Platinum	33 805 888-99 0010

Recommended miscellaneous

Dispenser with rosette - Dark Chrome 82 444 970-19

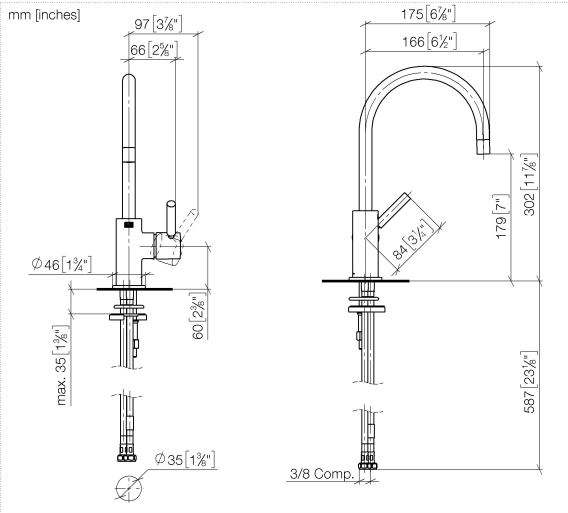


Recommended miscellaneous

AIR SWITCH Control button - Dark Chrome 10 713 970-19



33 805 888



Codes & Standards

ADA	ASME A112.18.1	California Energy Commission (CEC)	cUPC
NSF372	NSF61		

Certificates and sustainability

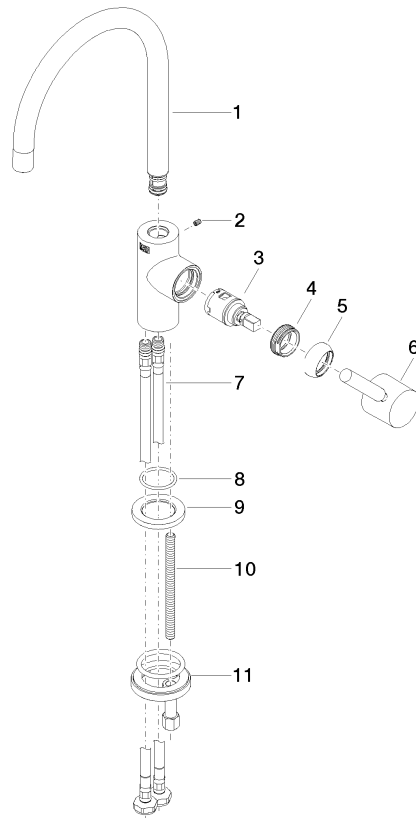
IAPMO_6397	IAPMO_N-4976	IAPMO_4976 (	
------------	--------------	--------------	--

## TARA BAR TAP Single-lever mixer - Dark Chrome

TARA

33 805 888

Parts for other  
finishes can be found  
here: [Chrome](#)



### Spare parts list

No.	Item Number	Name	Quantity used	Delivery time
10	09 31 11 012 90	pin	1.00	2
6	90 20 66 003 00-19	handle	1.00	20
2	09 31 11 008 90	pin	1.00	2
1	90 28 22 393 01-19	spout	1.00	20
11	04 30 11 038 64 90	fixing set	1.00	2
9	09 27 85 001-19	rosette	1.00	60
4	09 24 04 266 90	nut	1.00	2
5	09 28 30 021-19	cover	1.00	20
7	04 30 04 107 00 90	hose	2.00	2
8	09 14 10 118 90	seal	1.00	2
3	90 15 05 042 00 90	cartridge	1.00	2