

VAIA Single-lever mixer for rinsing/Profi spray - Durabrand (23kt Gold)

VAIA

33 810 809    Product version from 7/1/2023



- 202mm projection
  - pivotable spout 360°
  - air-enriched flow
  - max. flow 5.7 l/min at 3 bar flow pressure
  - lead-free
  - This product can help a building meet the requirements of Green Building Rating Systems, e.g. LEED®, BREEAM®, DGNB
- Single-lever mixer for combining with rinsing/Profi spray only

	Durabrand (23kt Gold)	33 810 809-09 0010
	Chrome	33 810 809-00 0010
	Brushed Platinum	33 810 809-06 0010
	Platinum	33 810 809-08 0010
	Dark Chrome	33 810 809-19 0010
	Brushed Durabrand (23kt Gold)	33 810 809-28 0010
	Matte Black	33 810 809-33 0010
	Brushed Bronze	33 810 809-42 0010
	Brushed Champagne (22kt Gold)	33 810 809-46 0010
	Champagne (22kt Gold)	33 810 809-47 0010
	Brushed Chrome	33 810 809-93 0010
	Brushed Dark Platinum	33 810 809-99 0010

Recommended miscellaneous

VAIA AIR SWITCH Control button - 10 713 809-09 Durabrand (23kt Gold)



Recommended miscellaneous

VAIA Rinsing spray set - 27 718 809-09 Durabrand (23kt Gold)



Recommended miscellaneous

VAIA Dispenser with rosette - 82 434 809-09 Durabrand (23kt Gold)





VAIA Single-lever mixer for rinsing/Profi spray - Durabrass (23kt Gold)

VAIA

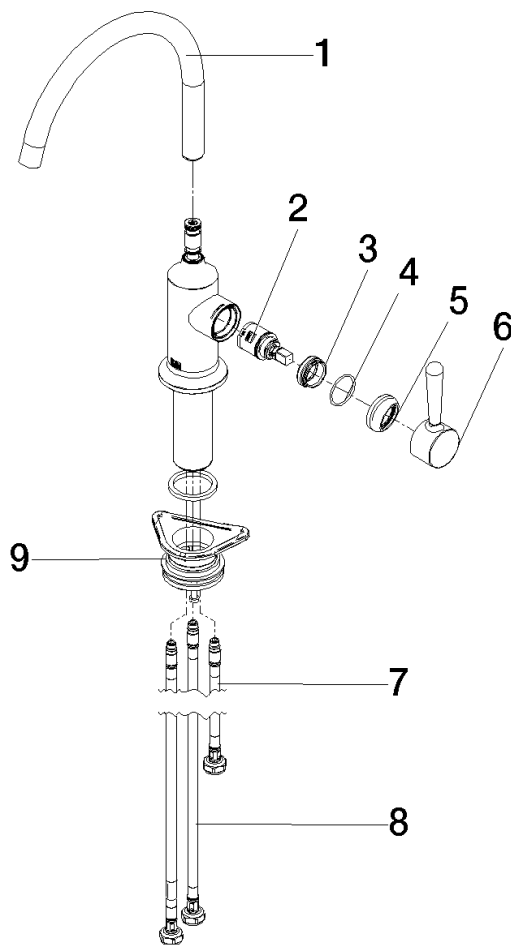
33 810 809    Product version from 7/1/2023

Codes & Standards			
ADA	ASME A112.18.1	California Energy Commission (CEC)	cUPC
NSF372	NSF61		

Certificates and sustainability			
IAPMO_N-4976	IAPMO_6397	IAPMO_4976 (	

33 810 809 Product version from 7/1/2023

Parts for other  
finishes can be found  
here: Chrome



## Spare parts list

No.	Item Number	Name	Quantity used	Delivery time
4	09 14 10 091 90	seal	1.00	2
2	90 15 05 042 00 90	cartridge	1.00	2
9	04 23 10 044 08 90	fixing set	1.00	2
6	90 20 80 050 00-09	handle	1.00	40
7	04 30 04 100 00 90	hose	1.00	2
3	09 24 04 266 90	nut	1.00	2
8	04 30 04 103 00 90	hose	2.00	2
5	90 28 30 052 00-09	cover	1.00	40
1	90 28 22 313 00-09	spout	1.00	-

Spare part can no longer be ordered, please order the replacement item