

MEM Single-lever mixer - Dark Chrome

MEM

33 815 682 Product version from 3/1/2023



- 241mm projection
- pivotable spout 360°
- Optional swivel limiter available with swivel limiter set 12 820 970 90
- air-enriched flow
- height of mixer 382 mm
- height up to aerator 241 mm
- hole diameter 35 mm
- 2 x pressure hose with 3/8" cap nut
- max. flow 5.7 l/min at 3 bar flow pressure
- lead-free
- This product can help a building meet the requirements of Green Building Rating Systems, e.g. LEED®, BREEAM®, DGNB

Not possible in combination with rinsing spray.

| | | |
|---|-------------------------------|--------------------|
|  | Dark Chrome | 33 815 682-19 0010 |
|  | Chrome | 33 815 682-00 0010 |
|  | Brushed Platinum | 33 815 682-06 0010 |
|  | Platinum | 33 815 682-08 0010 |
|  | Durabrass (23kt Gold) | 33 815 682-09 0010 |
|  | Brushed Durabrass (23kt Gold) | 33 815 682-28 0010 |
|  | Matte Black | 33 815 682-33 0010 |
|  | Brushed Bronze | 33 815 682-42 0010 |
|  | Brushed Champagne (22kt Gold) | 33 815 682-46 0010 |
|  | Champagne (22kt Gold) | 33 815 682-47 0010 |
|  | Brushed Chrome | 33 815 682-93 0010 |
|  | Brushed Dark Platinum | 33 815 682-99 0010 |

Recommended miscellaneous

Swivel limitation set -

12 820 970 90



Recommended miscellaneous

AIR SWITCH Control button - Dark Chrome



Recommended miscellaneous

Dispenser without rosette - Dark Chrome

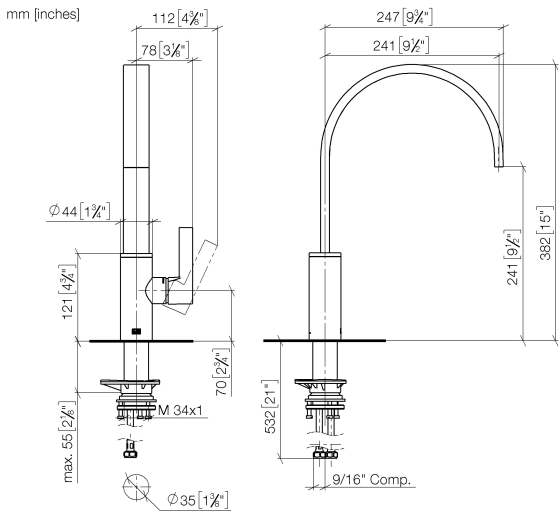
82 424 970-19



MEM Single-lever mixer - Dark Chrome

MEM

33 815 682 Product version from 3/1/2023

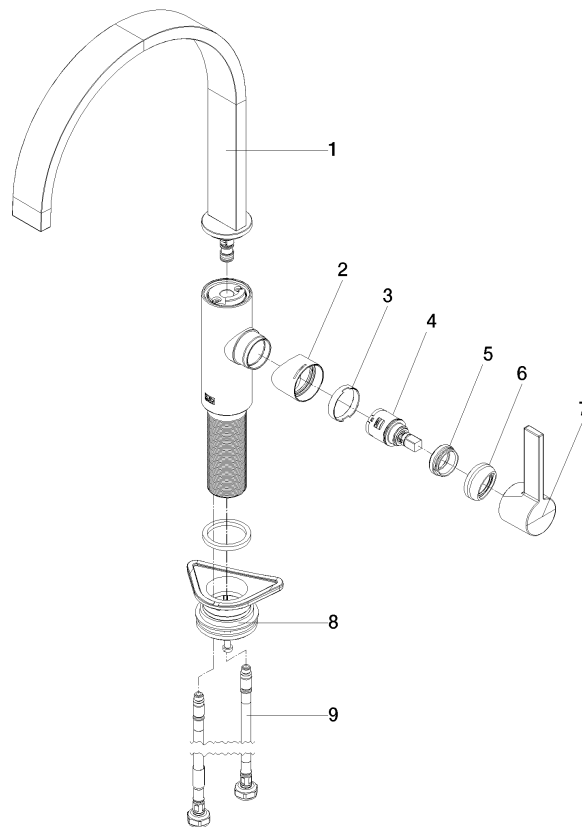


Codes & Standards

| | | | |
|--------|----------------|------------------------------------|------|
| ADA | ASME A112.18.1 | California Energy Commission (CEC) | cUPC |
| NSF372 | NSF61 | | |

Certificates and sustainability

| | | |
|------------|--------------|--------------|
| IAPMO_6397 | IAPMO_N-4976 | IAPMO_4976 (|
|------------|--------------|--------------|



Spare parts list

| No. | Item Number | Name | Quantity used | Delivery time |
|-----|--------------------|------------|---------------|---------------|
| 1 | 90 28 22 333 01-19 | spout | 1.00 | 20 |
| 7 | 90 20 86 004 00-19 | handle | 1.00 | 20 |
| 9 | 04 30 04 103 00 90 | hose | 2.00 | 2 |
| 2 | 09 19 86 012-19 | cover | 1.00 | 60 |
| 8 | 04 23 10 044 08 90 | fixing set | 1.00 | 2 |
| 4 | 90 15 05 042 00 90 | cartridge | 1.00 | 2 |
| 3 | 90 23 10 128 00 90 | nut | 1.00 | 2 |
| 5 | 09 24 04 266 90 | nut | 1.00 | 2 |
| 6 | 90 28 30 052 00-19 | cover | 1.00 | 20 |