

MEM Single-lever mixer - Brushed Champagne (22kt Gold)

MEM

33 815 682



- 241mm projection
- pivotable spout 360°
- Optional swivel limiter available with swivel limiter set 12 820 970 90
- air-enriched flow
- height of mixer 382 mm
- height up to aerator 241 mm
- hole diameter 35 mm
- 2 x pressure hose with 3/8" cap nut
- max. flow 5.7 l/min at 3 bar flow pressure
- lead-free
- This product can help a building meet the requirements of Green Building Rating Systems, e.g. LEED®, BREEAM®, DGNB

Not possible in combination with rinsing spray.

| | | |
|--|-------------------------------|--------------------|
|  | Brushed Champagne (22kt Gold) | 33 815 682-46 0010 |
|  | Chrome | 33 815 682-00 0010 |
|  | Brushed Platinum | 33 815 682-06 0010 |
|  | Platinum | 33 815 682-08 0010 |
|  | Durabass (23kt Gold) | 33 815 682-09 0010 |
|  | Dark Chrome | 33 815 682-19 0010 |
|  | Brushed Durabass (23kt Gold) | 33 815 682-28 0010 |
|  | Matte Black | 33 815 682-33 0010 |
|  | Champagne (22kt Gold) | 33 815 682-47 0010 |
|  | Brushed Chrome | 33 815 682-93 0010 |
|  | Brushed Dark Platinum | 33 815 682-99 0010 |

Recommended miscellaneous



Swivel limitation set - 12 820 970 90

Recommended miscellaneous



**Dispenser without rosette -
Brushed Champagne (22kt Gold)** 82 424 970-46

Recommended miscellaneous



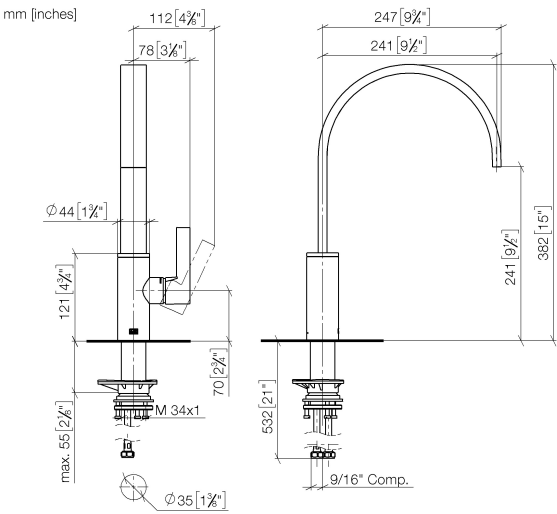
**AIR SWITCH Control button -
Brushed Champagne (22kt Gold)** 10 713 970-46



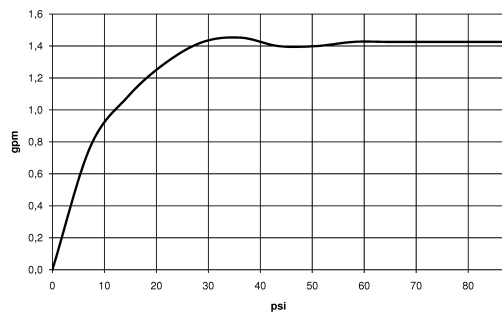
MEM Single-lever mixer - Brushed Champagne (22kt Gold)

MEM

33 815 682



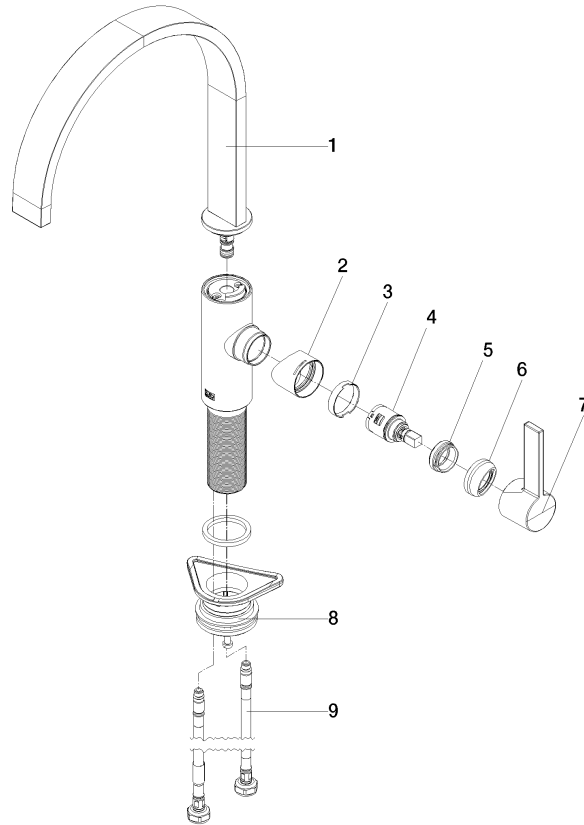
Flow rate chart



Codes & Standards

California Energy
Commission
(CEC)

Product version from 3/1/2023





MEM Single-lever mixer - Brushed Champagne (22kt Gold)

MEM

33 815 682

Spare parts list

Product version from 3/1/2023

| No. | Item Number | Name | Quantity used | Delivery time |
|-----|--------------------|-------|---------------|---------------|
| | 90 28 22 333 01-46 | spout | 10 | - |

Spare part can no longer be ordered, please order the replacement item