

## MEM Single-lever mixer - Brushed Chrome

MEM

33 815 682



- 241mm projection
- pivotable spout 360°
- Optional swivel limiter available with swivel limiter set 12 820 970 90
- air-enriched flow
- height of mixer 382 mm
- height up to aerator 241 mm
- hole diameter 35 mm
- 2 x pressure hose with 3/8" cap nut
- max. flow 5.7 l/min at 3 bar flow pressure
- lead-free
- This product can help a building meet the requirements of Green Building Rating Systems, e.g. LEED®, BREEAM®, DGNB

Not possible in combination with rinsing spray.

|   |                               |                    |
|---|-------------------------------|--------------------|
|    | Brushed Chrome                | 33 815 682-93 0010 |
|    | Chrome                        | 33 815 682-00 0010 |
|    | Brushed Platinum              | 33 815 682-06 0010 |
|    | Platinum                      | 33 815 682-08 0010 |
|    | Durabrand (23kt Gold)         | 33 815 682-09 0010 |
|    | Dark Chrome                   | 33 815 682-19 0010 |
|    | Brushed Durabrand (23kt Gold) | 33 815 682-28 0010 |
|    | Matte Black                   | 33 815 682-33 0010 |
|    | Brushed Champagne (22kt Gold) | 33 815 682-46 0010 |
|   | Champagne (22kt Gold)         | 33 815 682-47 0010 |
|  | Brushed Dark Platinum         | 33 815 682-99 0010 |

### Recommended miscellaneous

**Swivel limitation set -**

12 820 970 90



### Recommended miscellaneous

**AIR SWITCH Control button -  
Brushed Chrome**

10 713 970-93



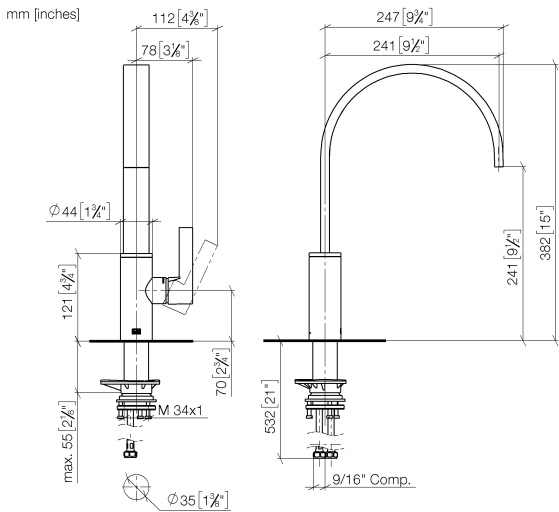
### Recommended miscellaneous

**Dispenser without rosette -  
Brushed Chrome**

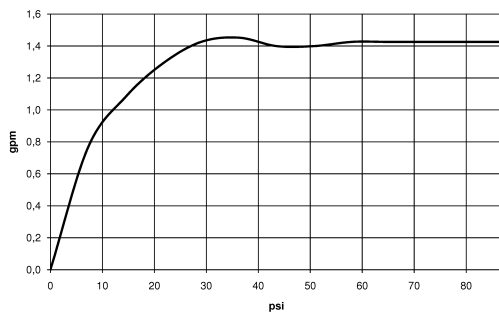
82 424 970-93



33 815 682



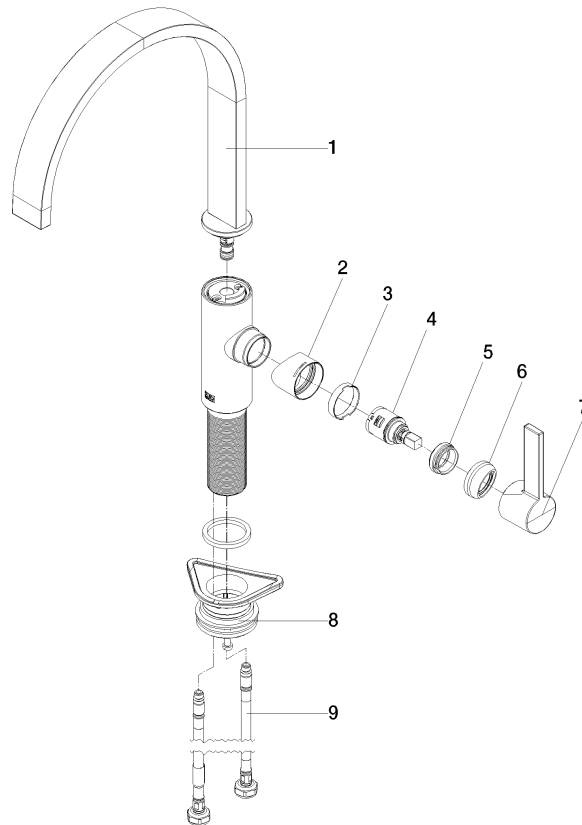
### Flow rate chart



### Codes & Standards

California Energy  
Commission  
(CEC)

33 815 682



## Spare parts list

| No.  | Item Number        | Name       | Quantity used | Delivery time |
|--|--------------------|------------|---------------|---------------|
| 1  | 90 28 22 333 01-93 | spout      | 1             | -             |
| Spare part can no longer be ordered, please order the replacement item |                    |            |               |               |
| 2  | 09 19 86 012-93    | cover      | 1             | 60            |
| 3  | 90 23 10 128 00 90 | nut        | 1             | 2             |
| 4  | 90 15 05 042 00 90 | cartridge  | 1             | 2             |
| 5  | 09 24 04 266 90    | nut        | 1             | 2             |
| 6  | 90 28 30 052 00-93 | cover      | 1             | 20            |
| 7  | 90 20 86 004 00-93 | handle     | 1             | -             |
| Spare part can no longer be ordered, please order the replacement item |                    |            |               |               |
| 8  | 04 23 10 044 08 90 | fixing set | 1             | 2             |
| 9  | 04 30 04 103 00 90 | hose       | 2             | 2             |