

TARA Single-lever mixer - Brushed Platinum

TARA

33 815 888



- 236mm projection
- pivotable spout 360°
- air-enriched flow
- height of mixer 400 mm
- height up to aerator 230 mm
- hole diameter 35 mm
- 2 x pressure hose with 3/8" cap nut
- max. flow 5.7 l/min at 3 bar flow pressure
- lead-free
- This product can help a building meet the requirements of Green Building Rating Systems, e.g. LEED®, BREEAM®, DGNB

Not possible in combination with rinsing spray.

| | | |
|--|-------------------------------|--------------------|
|  | Brushed Platinum | 33 815 888-06 0010 |
|  | Chrome | 33 815 888-00 0010 |
|  | Platinum | 33 815 888-08 0010 |
|  | Durabrand (23kt Gold) | 33 815 888-09 0010 |
|  | Dark Chrome | 33 815 888-19 0010 |
|  | Brushed Durabrand (23kt Gold) | 33 815 888-28 0010 |
|  | Matte Black | 33 815 888-33 0010 |
|  | Brushed Champagne (22kt Gold) | 33 815 888-46 0010 |
|  | Champagne (22kt Gold) | 33 815 888-47 0010 |
|  | Brushed Chrome | 33 815 888-93 0010 |
|  | Brushed Dark Platinum | 33 815 888-99 0010 |

Recommended miscellaneous

**AIR SWITCH Control button -
Brushed Platinum**

10 713 970-06



Recommended miscellaneous

**Dispenser with rosette - Brushed
Platinum**

82 444 970-06

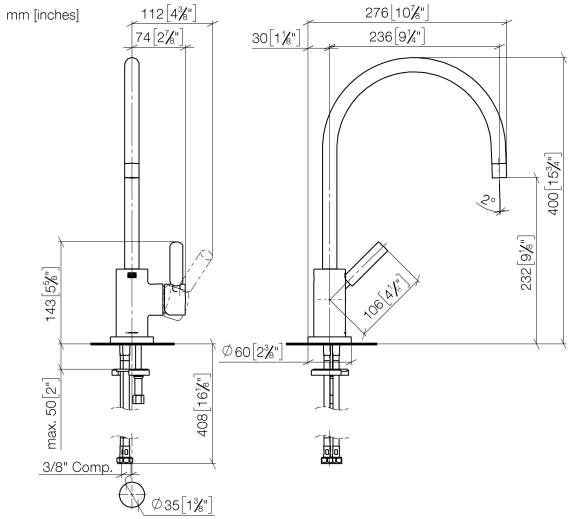




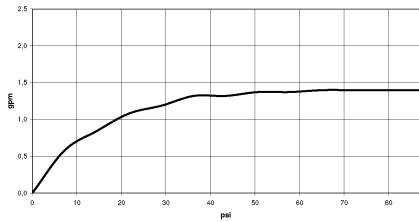
TARA Single-lever mixer - Brushed Platinum

TARA

33 815 888



Flow rate chart



Codes & Standards

| | | | |
|-------|----------------|---------------------------|------------------------------------|
| ADA | ASME A112.18.1 | ASME A112.18.1/CSA B125.1 | California Energy Commission (CEC) |
| cUPC | NSF/ANSI 372 | NSF/ANSI/CAN 61 | NSF372 |
| NSF61 | | | |



TARA Single-lever mixer - Brushed Platinum

TARA

33 815 888

Certificates

IAPMO_4976

IAPMO_6397

IAPMO_N-4976

33 815 888

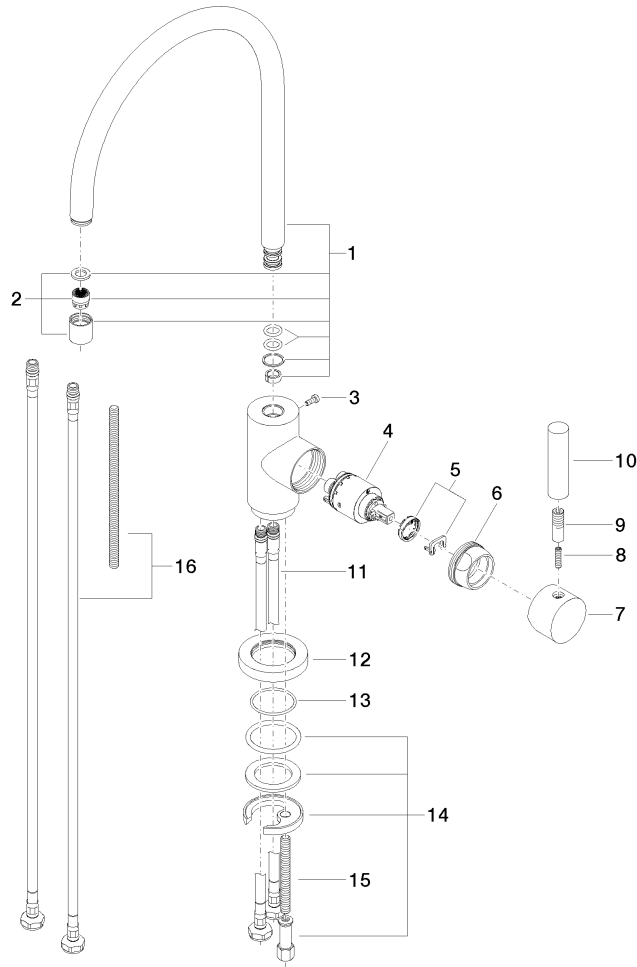
Product version up to 5/31/2010

Product version from 5/31/2010 to 10/27/2020

Product version from 10/27/2020 to 9/7/2021

Product version from 9/7/2021

Parts for other
finishes can be found
here: [Chrome](#)





TARA Single-lever mixer - Brushed Platinum

TARA

33 815 888

Spare parts list

Product version up to 5/31/2010

Product version from 5/31/2010 to 10/27/2020

Product version from 10/27/2020 to 9/7/2021

Product version from 9/7/2021

| No. | Item Number | Name | Quantity used | Delivery time |
|-----|--------------------|-------|---------------|---------------|
| | 90 28 22 049 03-06 | spout | 17 | 10 |