

VAIA Single-lever mixer for rinsing/Profi spray - Matte Black


33 826 809    Product version from 7/1/2023



- 241mm projection
  - pivotable spout 360°
  - air-enriched flow
  - max. flow 5.7 l/min at 3 bar flow pressure
  - lead-free
  - This product can help a building meet the requirements of Green Building Rating Systems, e.g. LEED®, BREEAM®, DGNB
- Single-lever mixer for combining with rinsing/Profi spray only

	Matte Black	33 826 809-33 0010
	Chrome	33 826 809-00 0010
	Brushed Platinum	33 826 809-06 0010
	Platinum	33 826 809-08 0010
	Durabrass (23kt Gold)	33 826 809-09 0010
	Dark Chrome	33 826 809-19 0010
	Brushed Durabrass (23kt Gold)	33 826 809-28 0010
	Brushed Bronze	33 826 809-42 0010
	Brushed Champagne (22kt Gold)	33 826 809-46 0010
	Champagne (22kt Gold)	33 826 809-47 0010
	Brushed Chrome	33 826 809-93 0010
	Brushed Dark Platinum	33 826 809-99 0010


Recommended miscellaneous

	<b>VAIA Rinsing spray set - Matte Black</b>	27 718 809-33
---	---	---------------

Recommended miscellaneous

	<b>VAIA AIR SWITCH Control button - Matte Black</b>	10 713 809-33
---	---	---------------

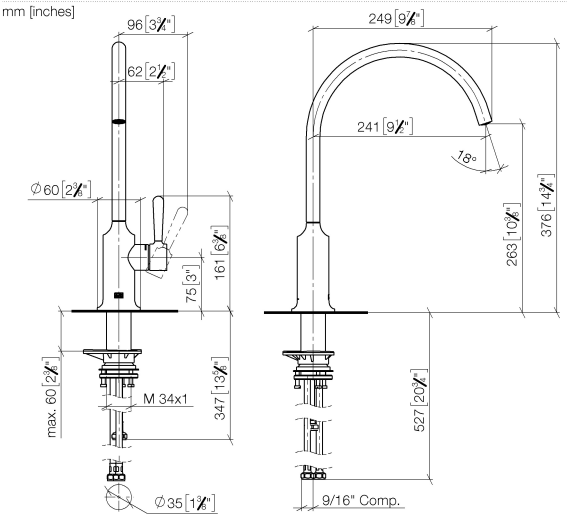
Recommended miscellaneous

	<b>VAIA Dispenser with rosette - Matte Black</b>	82 434 809-33
---	--	---------------

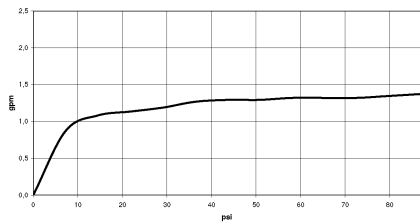


VAIA Single-lever mixer for rinsing/Profi spray - Matte Black

33 826 809    Product version from 7/1/2023



Flow rate chart



Codes & Standards

ASME A112.18.1	California Energy Commission (CEC)	cUPC	NSF372
NSF61			



## VAIA Single-lever mixer for rinsing/Profi spray - Matte Black

---

33 826 809 Product version from 7/1/2023

### Certificates

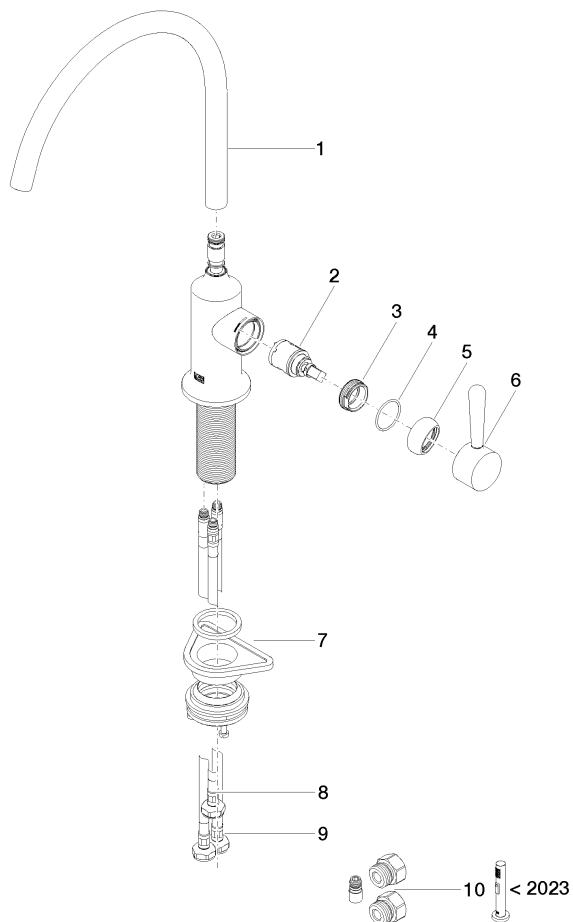
---

IAPMO\_N-4976      IAPMO\_6397      IAPMO\_4976 (

## VAIA Single-lever mixer for rinsing/Profi spray - Matte Black

33 826 809 Product version from 7/1/2023

Parts for other  
finishes can be found  
here: [Chrome](#)



### Spare parts list

No.	Item Number	Name	Quantity used	Delivery time
1	90 28 22 396 01-33	spout	1	30
2	90 15 05 042 00 90	cartridge	1	2
3	09 24 04 266 90	nut	1	2
4	09 14 10 091 90	seal	1	2
5	90 28 30 052 00-33	cover	1	30
6	90 20 80 050 00-33	handle	1	-
Spare part can no longer be ordered, please order the replacement item				
7	04 23 10 044 08 90	fixing set	1	2
8	04 30 04 100 00 90	hose	1	2
9	04 30 04 103 00 90	hose	2	2
10	90 17 09 046 14 90	conversion kit	1	2